



Rabbit Anti-ALS2CR3 antibody

SL11650R

Product Name:	ALS2CR3
Chinese Name:	肌萎缩侧索硬化症相关蛋白3抗体
Alias:	ALS2CR3; Amyotrophic lateral sclerosis 2 (juvenile) chromosome region, candidate 3; Amyotrophic lateral sclerosis 2 chromosomal region candidate gene 3 protein;TRAK2 HUMAN; Trafficking kinesin-binding protein 2.
Organism Species:	Rabbit
Clonality:	Polyclonal
React Species:	Human,Mouse,Rat,Dog,Pig,Cow,Sheep,
Applications:	ELISA=1:500-1000IHC-P=1:400-800IHC-F=1:400-800ICC=1:100-500IF=1:100-500 (Paraffin sections need antigen repair) not yet tested in other applications. optimal dilutions/concentrations should be determined by the end user.
Molecular weight:	101kDa
Cellular localization:	cytoplasmic
Form:	Lyophilized or Liquid
Concentration:	1mg/ml
immunogen:	KLH conjugated synthetic peptide derived from human ALS2CR3:701-800/914
Lsotype:	IgG
Purification:	affinity purified by Protein A
Storage Buffer:	0.01M TBS(pH7.4) with 1% BSA, 0.03% Proclin300 and 50% Glycerol.
Storage:	Store at -20 °C for one year. Avoid repeated freeze/thaw cycles. The lyophilized antibody is stable at room temperature for at least one month and for greater than a year when kept at -20°C. When reconstituted in sterile pH 7.4 0.01M PBS or diluent of antibody the antibody is stable for at least two weeks at 2-4 °C.
PubMed:	PubMed
Product Detail:	ALS2CR3 may regulate endosome-to-lysosome trafficking of membrane cargo, including EGFR. Function: May regulate endosome-to-lysosome trafficking of membrane cargo, including EGFR

Subunit:

Interacts with GABA-A receptor and O-GlcNAc transferase. Interacts with HGS (By similarity). Interacts with RHOT1/Miro-1 and RHOT2/Miro-2.

Subcellular Location:

Cytoplasm (By similarity). Early endosome (By similarity). Mitochondrion (By similarity). Note=Colocalizes with MGARP at the mitochondria. Translocates from the cytoplasm to the mitochondria in a MGARP-dependent manner

Tissue Specificity:

Widely expressed, with highest expression in heart.

Post-translational modifications:

O-glycosylated

Similarity:

Contains 1 HAP1 N-terminal domain.

SWISS:

O60296

Gene ID:

66008

Database links:

[Entrez Gene: 66008](#)Human

[Entrez Gene: 70827](#)Mouse

[Omim: 607334](#)Human

[SwissProt: O60296](#)Human

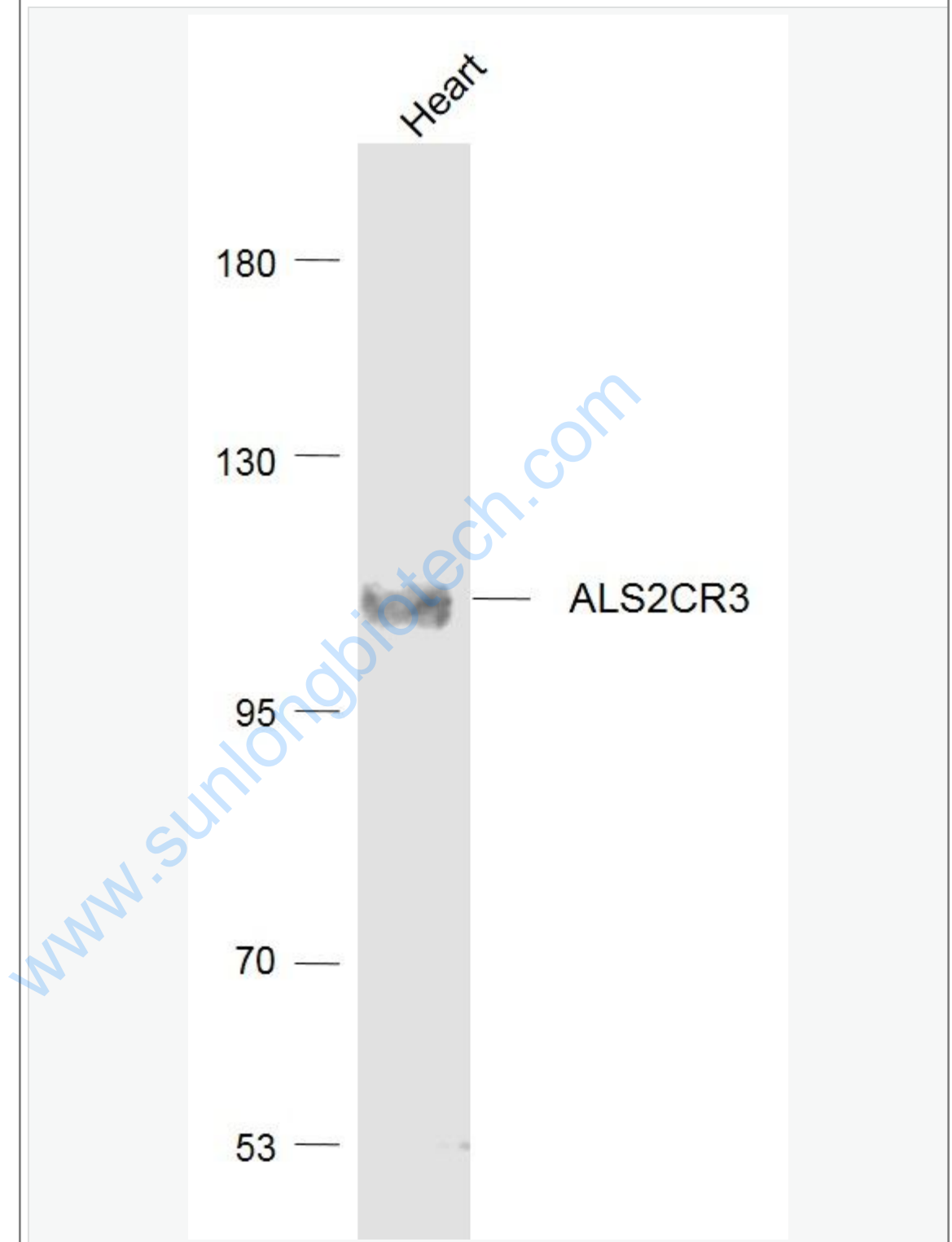
[Unigene: 152774](#)Human

[Unigene: 222887](#)Mouse

Important Note:

This product as supplied is intended for research use only, not for use in human, therapeutic or diagnostic applications.

Picture:



Sample:

Heart (Mouse) Lysate at 40 ug

Primary: Anti-ALS2CR3 (SL11650R) at 1/1000 dilution

Secondary: IRDye800CW Goat Anti-Rabbit IgG at 1/20000 dilution

Predicted band size: 101 kD

Observed band size: 101 kD

www.sunlongbiotech.com