



Rabbit Anti-BLMH antibody

SL11654R

Product Name:	BLMH
Chinese Name:	博莱霉素水解酶抗体
Alias:	BH; bleomycin hydrolase; BLM hydrolase; BMH; EC 3.4.22.40; BLMH_HUMAN.
Organism Species:	Rabbit
Clonality:	Polyclonal
React Species:	Human,Mouse,Rat,Dog,Pig,Cow,Horse,Rabbit,Sheep,
Applications:	WB=1:500-2000ELISA=1:500-1000IHC-P=1:400-800IHC-F=1:400-800ICC=1:100-500IF=1:100-500 (Paraffin sections need antigen repair) not yet tested in other applications. optimal dilutions/concentrations should be determined by the end user.
Molecular weight:	53kDa
Cellular localization:	cytoplasmic
Form:	Lyophilized or Liquid
Concentration:	1mg/ml
immunogen:	KLH conjugated synthetic peptide derived from human BLMH:308-400/455
Lsotype:	IgG
Purification:	affinity purified by Protein A
Storage Buffer:	0.01M TBS(pH7.4) with 1% BSA, 0.03% Proclin300 and 50% Glycerol.
Storage:	Store at -20 °C for one year. Avoid repeated freeze/thaw cycles. The lyophilized antibody is stable at room temperature for at least one month and for greater than a year when kept at -20°C. When reconstituted in sterile pH 7.4 0.01M PBS or diluent of antibody the antibody is stable for at least two weeks at 2-4 °C.
PubMed:	PubMed
Product Detail:	Bleomycin hydrolase (BMH) is a cytoplasmic cysteine peptidase that is highly conserved through evolution; however, the only known activity of the enzyme is metabolic inactivation of the glycopeptide bleomycin (BLM), an essential component of combination chemotherapy regimens for cancer. The protein contains the signature active site residues of the cysteine protease papain superfamily. [provided by RefSeq, Jul 2008].

Function:

BLMH is a member of the peptidase C1 family and exists as a homoheptamer. While its normal physiological function is not known, it protects normal and malignant cells from the glycopeptide antitumor drug BLM. It inactivates bleomycin B2 (a cytotoxic glycometallopeptide) by hydrolysis of a carboxyamide bond of beta-aminoalanine and also shows general aminopeptidase activity. The specificity varies but amino acid arylamides of Met, Leu and Ala are preferred.

Subunit:

Homoheptamer.

Subcellular Location:

Cytoplasmic

Similarity:

Belongs to the peptidase C1 family.

SWISS:

Q13867

Gene ID:

642

Database links:

[Entrez Gene: 642](#)Human

[Entrez Gene: 104184](#)Mouse

[Entrez Gene: 100009580](#)Rabbit

[Entrez Gene: 287552](#)Rat

[Omim: 602403](#)Human

[SwissProt: Q13867](#)Human

[SwissProt: Q8R016](#)Mouse

[SwissProt: P13019](#)Rabbit

[SwissProt: P70645](#)Rat

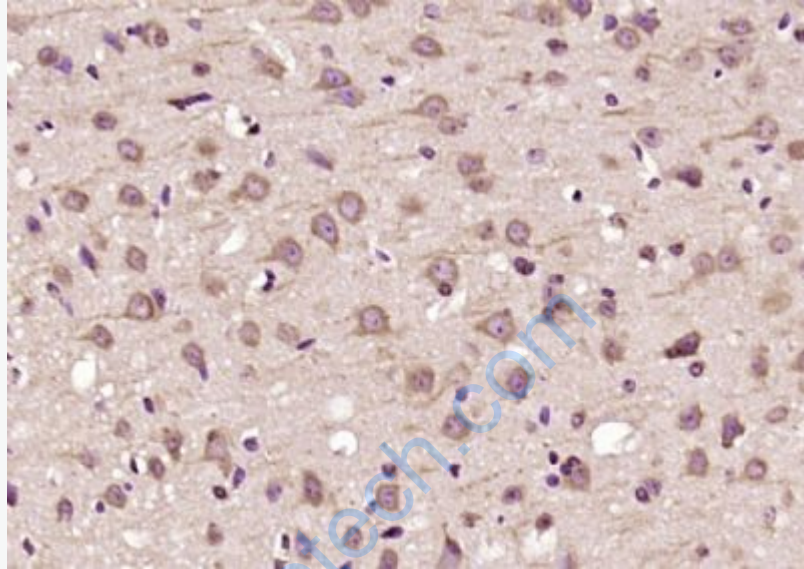
[Unigene: 371914](#)Human

[Unigene: 399785](#)Mouse

[Unigene: 100672](#)Rat

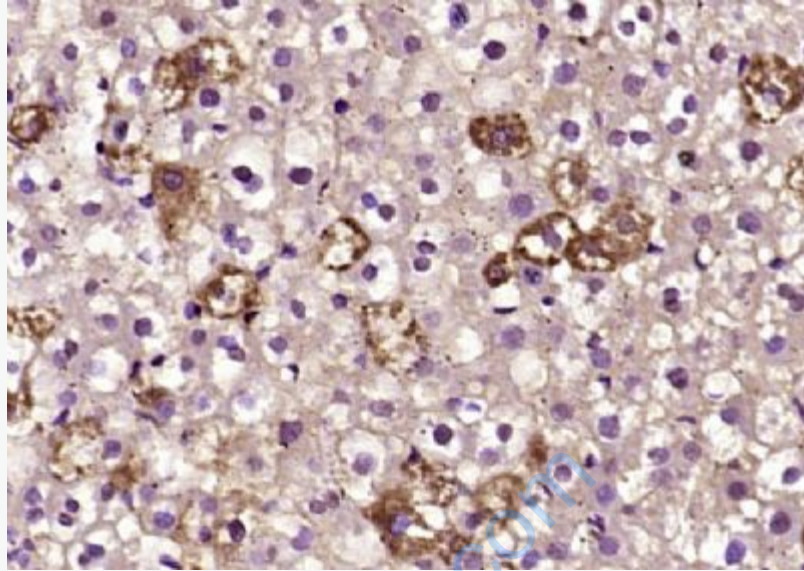
Important Note:

This product as supplied is intended for research use only, not for use in human, therapeutic or diagnostic applications.



Picture:

Paraformaldehyde-fixed, paraffin embedded (mouse brain); Antigen retrieval by boiling in sodium citrate buffer (pH6.0) for 15min; Block endogenous peroxidase by 3% hydrogen peroxide for 20 minutes; Blocking buffer (normal goat serum) at 37°C for 30min; Antibody incubation with (BLMH) Polyclonal Antibody, Unconjugated (SL11654R) at 1:200 overnight at 4°C, followed by operating according to SP Kit(Rabbit) (sp-0023) instructions and DAB staining.



Paraformaldehyde-fixed, paraffin embedded (rat liver); Antigen retrieval by boiling in sodium citrate buffer (pH6.0) for 15min; Block endogenous peroxidase by 3% hydrogen peroxide for 20 minutes; Blocking buffer (normal goat serum) at 37°C for 30min; Antibody incubation with (BLMH) Polyclonal Antibody, Unconjugated (SL11654R) at 1:200 overnight at 4°C, followed by operating according to SP Kit(Rabbit) (sp-0023) instructions and DAB staining.