



## Rabbit Anti-Gbx1 antibody

SL11660R

<b>Product Name:</b>	Gbx1
<b>Chinese Name:</b>	肠和大脑特定同源蛋白1抗体
<b>Alias:</b>	Gastrulation and brain specific homeobox protein 1; Gastrulation and brain-specific homeobox protein 1; Gastrulation brain homeo box 1; Gastrulation brain homeobox 1; Gbx1; GBX1 HUMAN; Homeobox protein GBX-1; Homeobox protein GBX1.
<b>Organism Species:</b>	Rabbit
<b>Clonality:</b>	Polyclonal
<b>React Species:</b>	Human,Mouse,Rat,Chicken,Dog,Pig,Rabbit,Sheep,Fruit Fly,Chimpanzee,mpanzee,
<b>Applications:</b>	ELISA=1:500-1000IHC-P=1:400-800IHC-F=1:400-800Flow-Cyt=1µg/TestICC=1:100-500IF=1:100-500 (Paraffin sections need antigen repair) not yet tested in other applications. optimal dilutions/concentrations should be determined by the end user.
<b>Molecular weight:</b>	38kDa
<b>Cellular localization:</b>	The nucleus
<b>Form:</b>	Lyophilized or Liquid
<b>Concentration:</b>	1mg/ml
<b>immunogen:</b>	KLH conjugated synthetic peptide derived from human Gbx1:201-300/363
<b>Lsotype:</b>	IgG
<b>Purification:</b>	affinity purified by Protein A
<b>Storage Buffer:</b>	0.01M TBS(pH7.4) with 1% BSA, 0.03% Proclin300 and 50% Glycerol.
<b>Storage:</b>	Store at -20 °C for one year. Avoid repeated freeze/thaw cycles. The lyophilized antibody is stable at room temperature for at least one month and for greater than a year when kept at -20°C. When reconstituted in sterile pH 7.4 0.01M PBS or diluent of antibody the antibody is stable for at least two weeks at 2-4 °C.
<b>PubMed:</b>	<a href="#">PubMed</a>
<b>Product Detail:</b>	The homeobox is DNA sequence that is approximately 180 base pairs long that is involved in all steps of the developmental regulation of animals, fungi and plants, from embryogenesis to cell differentiation. The homeobox encodes a protein domain of about 60 amino acids, called the homeodomain, that can bind to DNA. The gastrulation brain homeobox 1 (GBX1) gene, along with another homeobox gene (EN2), maps to

chromosome 7q36, and is expressed in septal and pallidal areas and in the basal forebrain cholinergic system, an area implicated in Alzheimer's disease. The GBX1 gene encodes the GBX1 protein, which localizes to the nucleus and contains 1 homeobox DNA-binding domain.

**Subcellular Location:**

Nucleus.

**Similarity:**

Contains 1 homeobox DNA-binding domain.

**SWISS:**

Q14549

**Gene ID:**

2636

**Database links:**

[Entrez Gene: 2636](#)Human

[Entrez Gene: 231044](#)Mouse

[Entrez Gene: 246149](#)Rat

[Omim: 603354](#)Human

[SwissProt: Q14549](#)Human

[SwissProt: P82976](#)Mouse

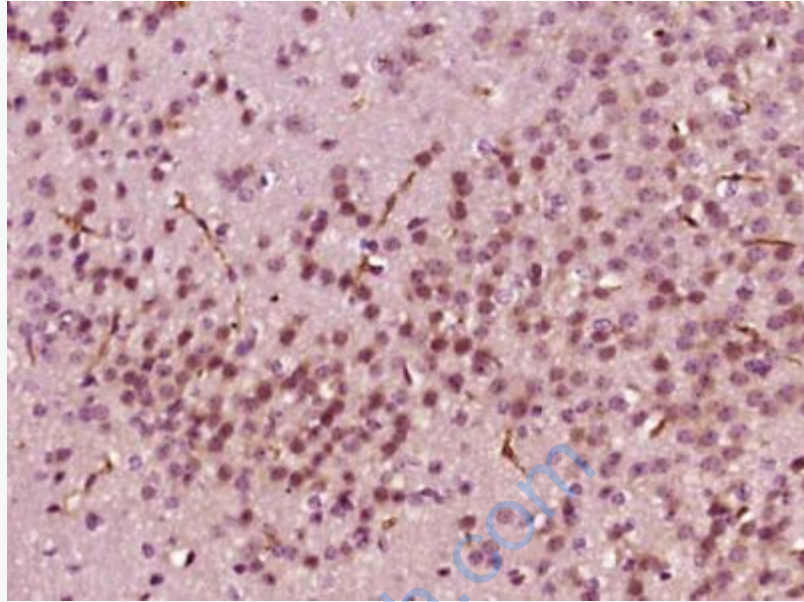
[Unigene: 647114](#)Human

[Unigene: 246596](#)Mouse

[Unigene: 92432](#)Rat

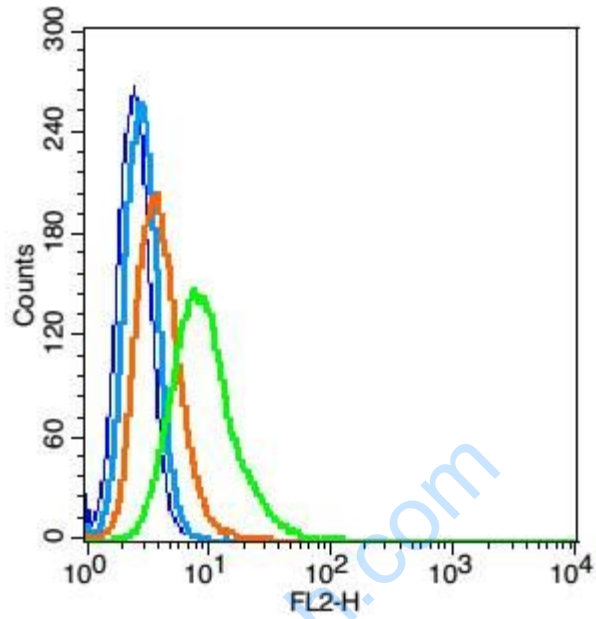
**Important Note:**

This product as supplied is intended for research use only, not for use in human, therapeutic or diagnostic applications.



**Picture:**

Paraformaldehyde-fixed, paraffin embedded (Mouse brain); Antigen retrieval by boiling in sodium citrate buffer (pH6.0) for 15min; Block endogenous peroxidase by 3% hydrogen peroxide for 20 minutes; Blocking buffer (normal goat serum) at 37°C for 30min; Antibody incubation with (Gbx1) Polyclonal Antibody, Unconjugated (SL11660R) at 1:400 overnight at 4°C, followed by operating according to SP Kit(Rabbit) (sp-0023) instructions and DAB staining.



Blank control(blue): RSC96(fixed with 2% paraformaldehyde (10 min) and then permeabilized with ice-cold 90% methanol for 30 min on ice).

Primary Antibody:Rabbit Anti-Gbx1 antibody(SL11660R), Dilution: 1 $\mu$ g in 100  $\mu$ L 1X PBS containing 0.5% BSA;

Isotype Control Antibody: Rabbit IgG(orange) ,used under the same conditions );

Secondary Antibody: Goat anti-rabbit IgG-PE(white blue), Dilution: 1:200 in 1 X PBS containing 0.5% BSA.