



## Rabbit Anti-PICALM antibody

SL11665R

<b>Product Name:</b>	PICALM
<b>Chinese Name:</b>	磷脂酰肌醇结合网格蛋白组装蛋白抗体
<b>Alias:</b>	CALM; Clathrin assembly lymphoid myeloid leukemia; Clathrin assembly lymphoid myeloid leukemia protein; CLTH; LAP; Phosphatidylinositol-binding clathrin assembly protein; PICAL_HUMAN; PICALM.
<b>Organism Species:</b>	Rabbit
<b>Clonality:</b>	Polyclonal
<b>React Species:</b>	Human,Mouse,Rat,Dog,Cow,Horse,Zebrafish,Sheep,
<b>Applications:</b>	WB=1:500-2000ELISA=1:500-1000IHC-P=1:400-800IHC-F=1:400-800ICC=1:100-500IF=1:100-500 (Paraffin sections need antigen repair) not yet tested in other applications. optimal dilutions/concentrations should be determined by the end user.
<b>Molecular weight:</b>	71kDa
<b>Cellular localization:</b>	cytoplasmicThe cell membrane
<b>Form:</b>	Lyophilized or Liquid
<b>Concentration:</b>	1mg/ml
<b>immunogen:</b>	KLH conjugated synthetic peptide derived from human PICALM/CALM:251-350/652
<b>Lsotype:</b>	IgG
<b>Purification:</b>	affinity purified by Protein A
<b>Storage Buffer:</b>	0.01M TBS(pH7.4) with 1% BSA, 0.03% Proclin300 and 50% Glycerol.
<b>Storage:</b>	Store at -20 °C for one year. Avoid repeated freeze/thaw cycles. The lyophilized antibody is stable at room temperature for at least one month and for greater than a year when kept at -20°C. When reconstituted in sterile pH 7.4 0.01M PBS or diluent of antibody the antibody is stable for at least two weeks at 2-4 °C.
<b>PubMed:</b>	<a href="#">PubMed</a>
<b>Product Detail:</b>	This gene encodes a clathrin assembly protein, which recruits clathrin and adaptor protein complex 2 (AP2) to cell membranes at sites of coated-pit formation and clathrin-vesicle assembly. The protein may be required to determine the amount of membrane to be recycled, possibly by regulating the size of the clathrin cage. The protein is involved in AP2-dependent clathrin-mediated endocytosis at the neuromuscular junction. A

chromosomal translocation t(10;11)(p13;q14) leading to the fusion of this gene and the MLLT10 gene is found in acute lymphoblastic leukemia, acute myeloid leukemia and malignant lymphomas. The polymorphisms of this gene are associated with the risk of Alzheimer disease. Multiple alternatively spliced transcript variants encoding different isoforms have been found for this gene. [provided by RefSeq, May 2011]

**Function:**

Assembly protein recruiting clathrin and adaptor protein complex 2 (AP2) to cell membranes at sites of coated-pit formation and clathrin-vesicle assembly. May be required to determine the amount of membrane to be recycled, possibly by regulating the size of the clathrin cage. Involved in AP2-dependent clathrin-mediated endocytosis at the neuromuscular junction.

**Subunit:**

Binds clathrin; involves primarily the C-terminal sequences, but the full-length protein is required for full binding capacity. Binds phosphatidylinositol 4,5- biphosphate.

**Subcellular Location:**

Membrane, clathrin-coated pit. Golgi apparatus. Cytoplasmic vesicle, clathrin-coated vesicle. Note=Colocalized with clathrin in the Golgi area.

**Tissue Specificity:**

Expressed in all tissues examined.

**DISEASE:**

Note=A chromosomal aberration involving PICALM is found in diffuse histiocytic lymphomas. Translocation t(10;11)(p13;q14) with MLLT10.

**Similarity:**

Contains 1 ENTH (epsin N-terminal homology) domain.

**SWISS:**

Q13492

**Gene ID:**

8301

**Database links:**

[Entrez Gene: 8301](#) Human

[Entrez Gene: 233489](#) Mouse

[Entrez Gene: 89816](#) Rat

[Omim: 603025](#) Human

[SwissProt: Q13492](#) Human

[SwissProt: Q7M6Y3](#) Mouse

[SwissProt: O55012](#) Rat

[Unigene: 163893](#) Human

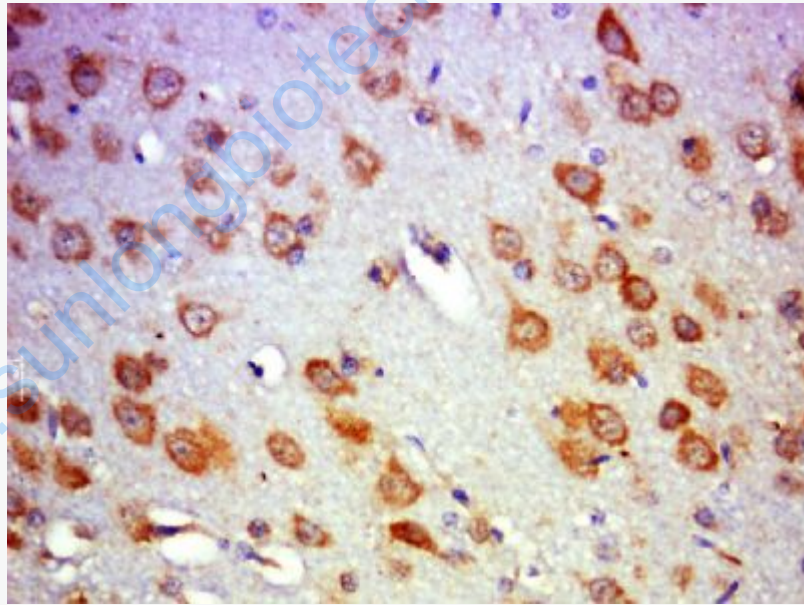
[Unigene: 235175](#) Mouse

[Unigene: 24871](#) Rat

**Important Note:**

This product as supplied is intended for research use only, not for use in human, therapeutic or diagnostic applications.

**Picture:**



Paraformaldehyde-fixed, paraffin embedded (rat brain); Antigen retrieval by boiling in sodium citrate buffer (pH6.0) for 15min; Block endogenous peroxidase by 3% hydrogen peroxide for 20 minutes; Blocking buffer (normal goat serum) at 37°C for 30min; Antibody incubation with (PICALM) Polyclonal Antibody, Unconjugated (SL11665R) at 1:500 overnight at 4°C, followed by a conjugated secondary (sp-

	0023) for 20 minutes and DAB staining.
--	--

[www.sunlongbiotech.com](http://www.sunlongbiotech.com)