



Rabbit Anti-Nuclear Pore Complex Proteins/Nup107 antibody

SL11678R

Product Name:	Nuclear Pore Complex Proteins/Nup107
Chinese Name:	核孔复合体蛋白抗体
Alias:	107 kDa nucleoporin; NPC proteins; NU107_HUMAN; Nuclear pore complex protein Nup107; Nucleoporin 107kDa; Nucleoporin Nup107; NUP 107; NUP 84; NUP107; NUP153; NUP155; NUP84; NUP98.
Organism Species:	Rabbit
Clonality:	Polyclonal
React Species:	Human,Mouse,Rat,Pig,Horse,Rabbit,
Applications:	WB=1:500-2000ELISA=1:500-1000Flow-Cyt=3µg/Test not yet tested in other applications. optimal dilutions/concentrations should be determined by the end user.
Molecular weight:	106kDa
Cellular localization:	The nucleus
Form:	Lyophilized or Liquid
Concentration:	1mg/ml
immunogen:	KLH conjugated synthetic peptide derived from human Nuclear Pore Complex Proteins:501-600/925
Lsotype:	IgG
Purification:	affinity purified by Protein A
Storage Buffer:	0.01M TBS(pH7.4) with 1% BSA, 0.03% Proclin300 and 50% Glycerol.
Storage:	Store at -20 °C for one year. Avoid repeated freeze/thaw cycles. The lyophilized antibody is stable at room temperature for at least one month and for greater than a year when kept at -20°C. When reconstituted in sterile pH 7.4 0.01M PBS or diluent of antibody the antibody is stable for at least two weeks at 2-4 °C.
PubMed:	PubMed
Product Detail:	This gene encodes a member of the nucleoporin family. The protein is localized to the nuclear rim and is an essential component of the nuclear pore complex (NPC). All molecules entering or leaving the nucleus either diffuse through or are actively

transported by the NPC. Alternate transcriptional splice variants of this gene have been observed but have not been thoroughly characterized. [provided by RefSeq, Jul 2008]

Function:

Essential component of nuclear pore complex. Required for the assembly of peripheral proteins into the nuclear pore complex.

Subunit:

Forms part of the Nup160 subcomplex in the nuclear pore which is composed of Nup160, Nup133, Nup107 and Nup96. This complex plays a role in RNA export and in tethering Nup98 and Nup153 to the nucleus.

Subcellular Location:

Nucleus, nuclear pore complex. Chromosome, centromere, kinetochore. Note=Located on both the cytoplasmic and nuclear sides of the nuclear pore. During mitosis, localizes to the kinetochores.

Post-translational modifications:

Phosphorylated upon DNA damage, probably by ATM or ATR.

Similarity:

Belongs to the nucleoporin Nup84/Nup107 family.

SWISS:

P57740

Gene ID:

57122

Database links:

[Entrez Gene: 57122](#) Human

[Entrez Gene: 103468](#) Mouse

[Entrez Gene: 116555](#) Rat

[Omim: 607617](#) Human

[SwissProt: P57740](#) Human

[SwissProt: Q3TT06](#) Mouse

[SwissProt: Q3V395](#) Mouse

[SwissProt: Q569X8](#) Mouse

[SwissProt: Q8BH74](#) Mouse

[SwissProt: P52590](#) Rat

[Unigene: 524574](#) Human

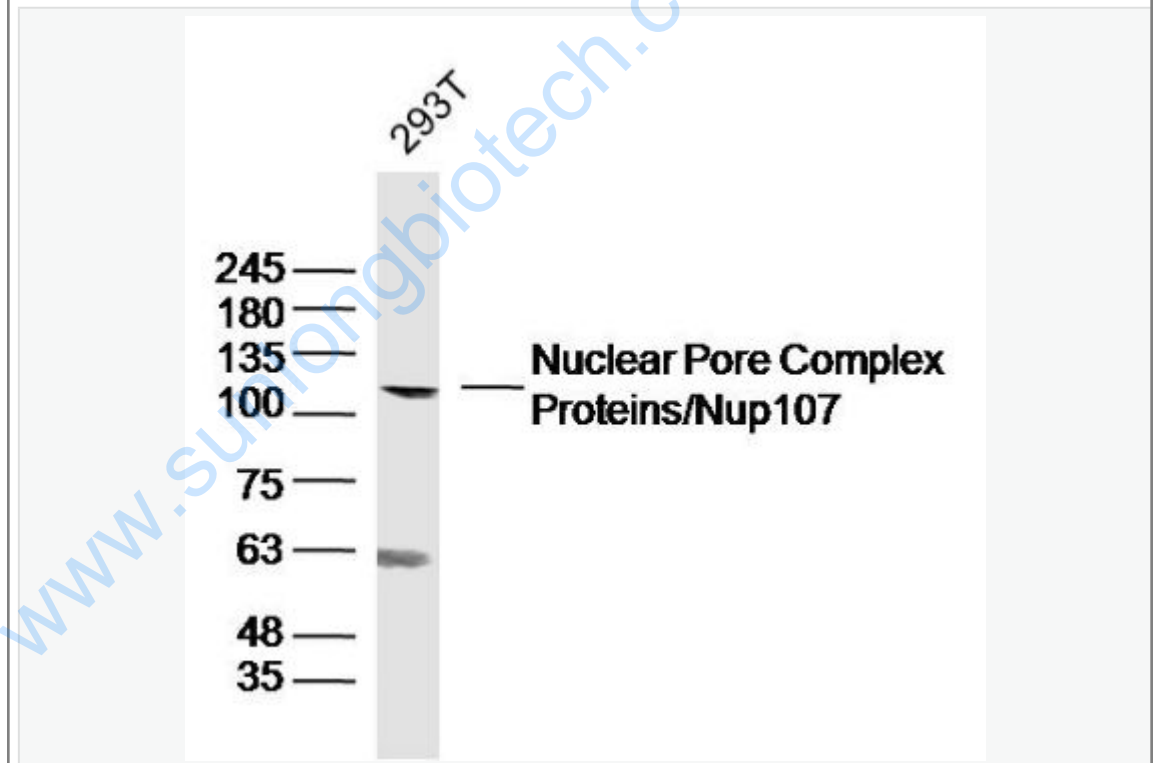
[Unigene: 12568](#) Mouse

[Unigene: 11398](#) Rat

Important Note:

This product as supplied is intended for research use only, not for use in human, therapeutic or diagnostic applications.

Picture:



Sample:

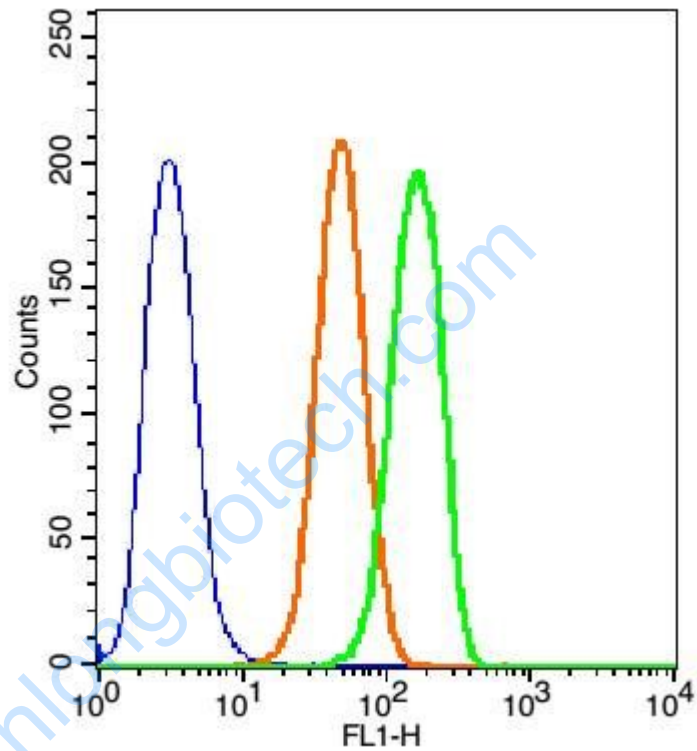
293T Cell (Human) Lysate at 30 ug

Primary: Anti- Nuclear Pore Complex Proteins'Nup107 (SL11678R)at 1/300 dilution

Secondary: IRDye800CW Goat Anti-Rabbit IgG at 1/20000 dilution

Predicted band size: 106kD

Observed band size: 106kD



Blank control(blue): 293T(fixed with 2% paraformaldehyde (10 min) and then permeabilized with ice-cold 90% methanol for 30 min on ice).

Primary Antibody: Rabbit Anti-Nuclear Pore Complex Proteins/Nup107/AF488

Conjugated antibody (SL11678R), Dilution: 5 μ g in 100 μ L 1X PBS containing 0.5% BSA;

Isotype Control Antibody: Rabbit IgG/AF488(orange) ,used under the same conditions.