



Rabbit Anti-BACE2 antibody

SL11680R

Product Name:	BACE2
Chinese Name:	β淀粉样前体蛋白裂解酶2抗体
Alias:	ALP 56; ALP-56; ALP56; ALP56; Asp 1; ASP1; ASP1; ASP21; Aspartic Like Protease 56kDa; Aspartic Like Protease 56kDa; Aspartic-like protease 56 kDa; Aspartyl protease 1; Aspartyl protease 1; BACE 2; BACE 2; Bace2; BACE2_HUMAN; Beta Secretase 2; Beta Secretase 2; Beta Site Amyloid Beta A4 Precursor Protein Cleaving Enzyme 2; Beta Site Amyloid Beta A4 Precursor Protein Cleaving Enzyme 2; Beta-secretase 2; Beta-site amyloid precursor protein cleaving enzyme 2; Beta-site APP cleaving enzyme 2; Beta-site APP cleaving enzyme 2; Down region aspartic protease; Down region aspartic protease; Downs Syndrome Region Aspartic Protease; Downs Syndrome Region Aspartic Protease; DRAP; Memapsin 1; Memapsin1; Memapsin-1; Membrane associated aspartic protease 1; Membrane-associated aspartic protease 1; Theta-secretase.
Organism Species:	Rabbit
Clonality:	Polyclonal
React Species:	Mouse,Rat,Dog,
Applications:	IHC-P=1:400-800IHC-F=1:400-800 (Paraffin sections need antigen repair) not yet tested in other applications. optimal dilutions/concentrations should be determined by the end user.
Molecular weight:	50kDa
Cellular localization:	cytoplasmicThe cell membraneExtracellular matrix
Form:	Lyophilized or Liquid
Concentration:	1mg/ml
immunogen:	KLH conjugated synthetic peptide derived from human BACE2:101-200/518
Lsotype:	IgG
Purification:	affinity purified by Protein A
Storage Buffer:	0.01M TBS(pH7.4) with 1% BSA, 0.03% Proclin300 and 50% Glycerol.
Storage:	Store at -20 癆 for one year. Avoid repeated freeze/thaw cycles. The lyophilized antibody is stable at room temperature for at least one month and for greater than a year when kept at -20癆. When reconstituted in sterile pH 7.4 0.01M PBS or diluent of

	antibody the antibody is stable for at least two weeks at 2-4 癢.
PubMed:	PubMed
Product Detail:	<p>Cerebral deposition of amyloid beta peptide is an early and critical feature of Alzheimer's disease and a frequent complication of Down syndrome. Amyloid beta peptide is generated by proteolytic cleavage of amyloid precursor protein by 2 proteases, one of which is the protein encoded by this gene. This gene localizes to the 'Down critical region' of chromosome 21. The encoded protein, a member of the peptidase A1 protein family, is a type I integral membrane glycoprotein and aspartic protease. Three transcript variants encoding different isoforms have been described for this gene. [provided by RefSeq, Jul 2008].</p> <p>Function: Responsible for the proteolytic processing of the amyloid precursor protein (APP). Cleaves APP, between residues 690 and 691, leading to the generation and extracellular release of beta-cleaved soluble APP, and a corresponding cell-associated C-terminal fragment which is later released by gamma-secretase. It has also been shown that it can cleave APP between residues 671 and 672.</p> <p>Subunit: Monomer. Interacts ith RTN3 and RTN4.</p> <p>Subcellular Location: Membrane. Golgi apparatus. Endoplasmic reticulum. Endosome. Cell surface.</p> <p>Tissue Specificity: Brain. Present in neurons within the hippocampus, frontal cortex and temporal cortex (at protein level). Expressed at low levels in most peripheral tissues and at higher levels in colon, kidney, pancreas, placenta, prostate, stomach and trachea. Expressed at low levels in the brain. Found in spinal cord, medulla oblongata, substantia nigra and locus coruleus. Expressed in the ductal epithelium of both normal and malignant prostate.</p> <p>Post-translational modifications: Undergoes autoproteolytic cleavage. Glycosylated.</p> <p>Similarity: Belongs to the peptidase A1 family.</p> <p>SWISS: Q9Y5Z0</p> <p>Gene ID: 25825</p> <p>Database links:</p>

[Entrez Gene: 25825](#)Human

[Entrez Gene: 56175](#)Mouse

[Entrez Gene: 288227](#)Rat

[Omim: 605668](#)Human

[SwissProt: Q9Y5Z0](#)Human

[SwissProt: Q9JL18](#)Mouse

[SwissProt: Q6IE75](#)Rat

[Unigene: 529408](#)Human

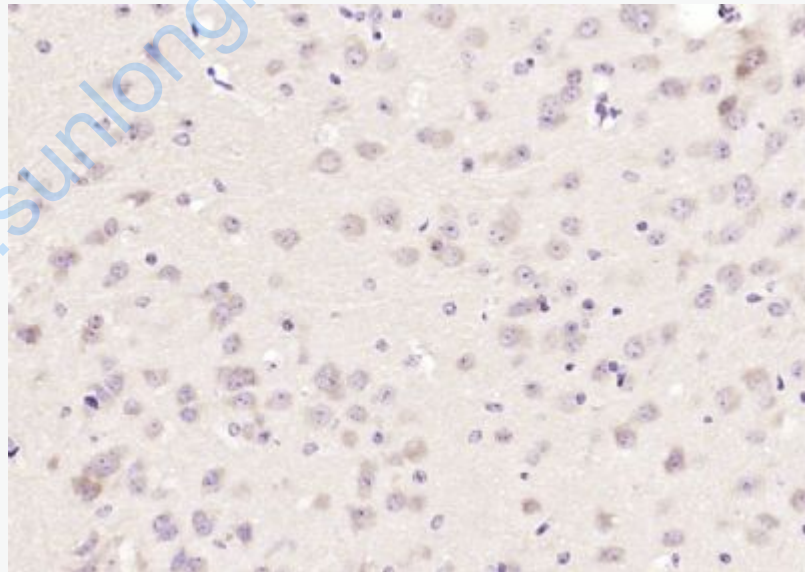
[Unigene: 97885](#)Mouse

[Unigene: 38581](#)Rat

Important Note:

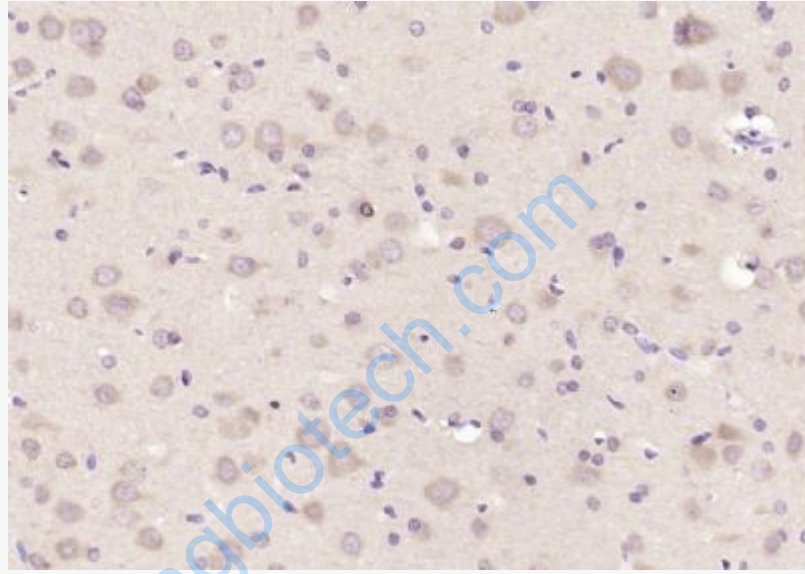
This product as supplied is intended for research use only, not for use in human, therapeutic or diagnostic applications.

Picture:



Paraformaldehyde-fixed, paraffin embedded (mouse brain); Antigen retrieval by boiling in sodium citrate buffer (pH6.0) for 15min; Block endogenous peroxidase by 3% hydrogen peroxide for 20 minutes; Blocking buffer (normal goat serum) at 37°C

for 30min; Antibody incubation with (BACE2) Polyclonal Antibody, Unconjugated (SL11680R) at 1:200 overnight at 4°C, followed by operating according to SP Kit(Rabbit) (sp-0023) instructions and DAB staining.



Paraformaldehyde-fixed, paraffin embedded (rat brain); Antigen retrieval by boiling in sodium citrate buffer (pH6.0) for 15min; Block endogenous peroxidase by 3% hydrogen peroxide for 20 minutes; Blocking buffer (normal goat serum) at 37°C for 30min; Antibody incubation with (BACE2) Polyclonal Antibody, Unconjugated (SL11680R) at 1:200 overnight at 4°C, followed by operating according to SP Kit(Rabbit) (sp-0023) instructions and DAB staining.