



## Rabbit Anti-CCR-1/CD191 antibody

SL1169R

<b>Product Name:</b>	CCR-1/CD191
<b>Chinese Name:</b>	细胞表面Chemokine受体1抗体
<b>Alias:</b>	CC chemokine receptor 1; A630091E18Rik; CC-CKR-11; CCBP2; CCR10; CCR11; CCRL1; CCX-CKR; CCX-CKR1; CKR-11; Cmkbrl1; LOC684092; LOC685243; PPR1; VSHK1; C C chemokine receptor type 1; C C CKR 1; CC CKR 1; CCR 1; CD 191; CD191; CD191; Chemokine (C-C motif) receptor 1; Chemokine C C motif receptor 1; CKR 1; CKR1; CMKBR 1; CMKBR1; CMKR 1; CMKR1; HM145; LD78 receptor; Macrophage inflammatory protein 1 alpha /Rantes receptor; Macrophage inflammatory protein 1 alpha receptor; MIP 1alpha R; Mip-1a-R; MIP1aR; RANTES R; RANTES receptor; SCYAR1; CCR1_HUMAN; C-C chemokine receptor type 1; C-C CKR-1; CC-CKR-1; Short=CCR-1; CCR1; LD78 receptor; MIP-1alpha-R; RANTES-R; CD191.
<b>Organism Species:</b>	Rabbit
<b>Clonality:</b>	Polyclonal
<b>React Species:</b>	Human,Mouse,Rat,
<b>Applications:</b>	WB=1:500-2000ELISA=1:500-1000IHC-P=1:400-800IHC-F=1:400-800IF=1:100-500 (Paraffin sections need antigen repair) not yet tested in other applications. optimal dilutions/concentrations should be determined by the end user.
<b>Molecular weight:</b>	40kDa
<b>Cellular localization:</b>	The cell membrane
<b>Form:</b>	Lyophilized or Liquid
<b>Concentration:</b>	1mg/ml
<b>immunogen:</b>	KLH conjugated synthetic peptide derived from human CCR-1:301-355/355
<b>Lsotype:</b>	IgG
<b>Purification:</b>	affinity purified by Protein A
<b>Storage Buffer:</b>	0.01M TBS(pH7.4) with 1% BSA, 0.03% Proclin300 and 50% Glycerol.
<b>Storage:</b>	Store at -20 °C for one year. Avoid repeated freeze/thaw cycles. The lyophilized antibody is stable at room temperature for at least one month and for greater than a year when kept at -20°C. When reconstituted in sterile pH 7.4 0.01M PBS or diluent of antibody the antibody is stable for at least two weeks at 2-4 °C.

**PubMed:**[PubMed](#)

This gene encodes a member of the beta chemokine receptor family, which is predicted to be a seven transmembrane protein similar to G protein-coupled receptors. The ligands of this receptor include macrophage inflammatory protein 1 alpha (MIP-1 alpha), regulated on activation normal T expressed and secreted protein (RANTES), monocyte chemoattractant protein 3 (MCP-3), and myeloid progenitor inhibitory factor-1 (MPIF-1). Chemokines and their receptors mediated signal transduction are critical for the recruitment of effector immune cells to the site of inflammation. Knockout studies of the mouse homolog suggested the roles of this gene in host protection from inflammatory response, and susceptibility to virus and parasite. This gene and other chemokine receptor genes, including CCR2, CCRL2, CCR3, CCR5 and CXCR1, are found to form a gene cluster on chromosome 3p. [provided by RefSeq, Jul 2008]

**Function:**

Receptor for a C-C type chemokine. Binds to MIP-1-alpha, MIP-1-delta, RANTES, and MCP-3 and, less efficiently, to MIP-1-beta or MCP-1 and subsequently transduces a signal by increasing the intracellular calcium ions level. Responsible for affecting stem cell proliferation.

**Subunit:**

Interacts with CREB3.

**Subcellular Location:**

Cell membrane; Multi-pass membrane protein.

**Tissue Specificity:**

Widely expressed in different hematopoietic cells.

**Similarity:**

Belongs to the G-protein coupled receptor 1 family.

**SWISS:**

P32246

**Gene ID:**

1230

**Database links:**

[Entrez Gene: 1230](#) Human

[Entrez Gene: 12768](#) Mouse

[Omim: 601159](#) Human

[SwissProt: P32246](#) Human

**Product Detail:**

[SwissProt: P51675](#) Mouse

[Unigene: 301921](#) Human

[Unigene: 274927](#) Mouse

**Important Note:**

This product as supplied is intended for research use only, not for use in human, therapeutic or diagnostic applications.

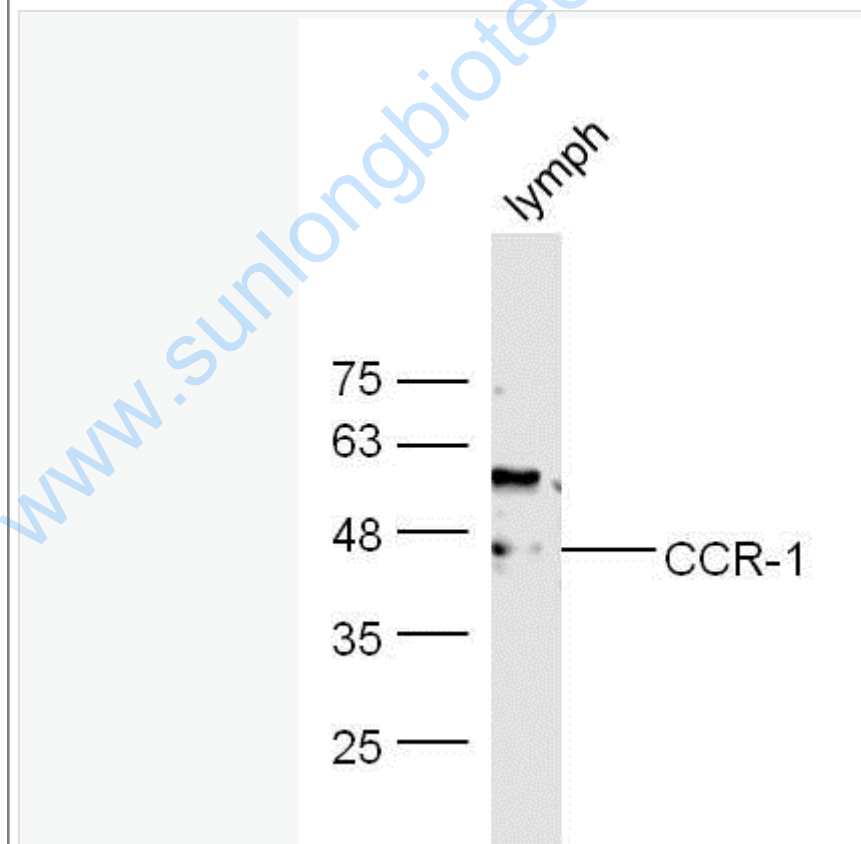
Chemokine是当今cell factorResearch

Area的热点之一,它参与多种免疫及炎症反应,在感染、Tumour的生长与转移、组织修复及创伤愈合等病理生理过程中发挥重要作用.

C-

C型Chemokine受体1(CCR1)主要在嗜酸粒细胞, Th2lymphocyte, 肥大细胞, 支气管epithelial cells上表达.CCR1在Tumour的生长与转移方面起到一定的作用.

Picture:



Sample:

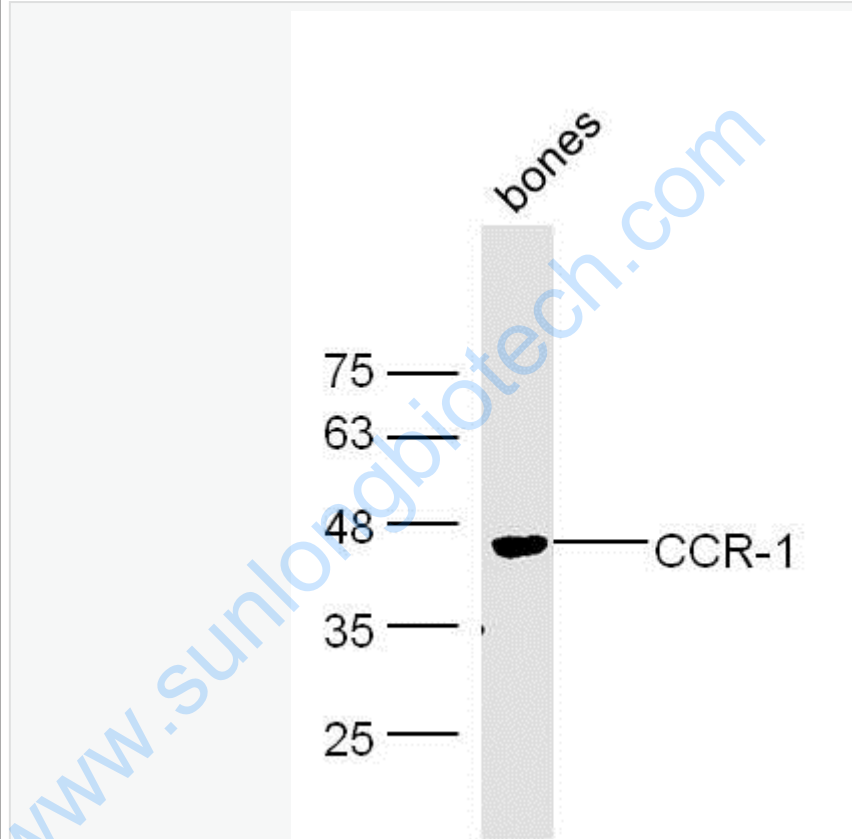
lymph (Mouse) Lysate at 40 ug

Primary: Anti-CCR-1 (SL1169R) at 1/300 dilution

Secondary: IRDye800CW Goat Anti-Rabbit IgG at 1/20000 dilution

Predicted band size: 40 kD

Observed band size: 46 kD



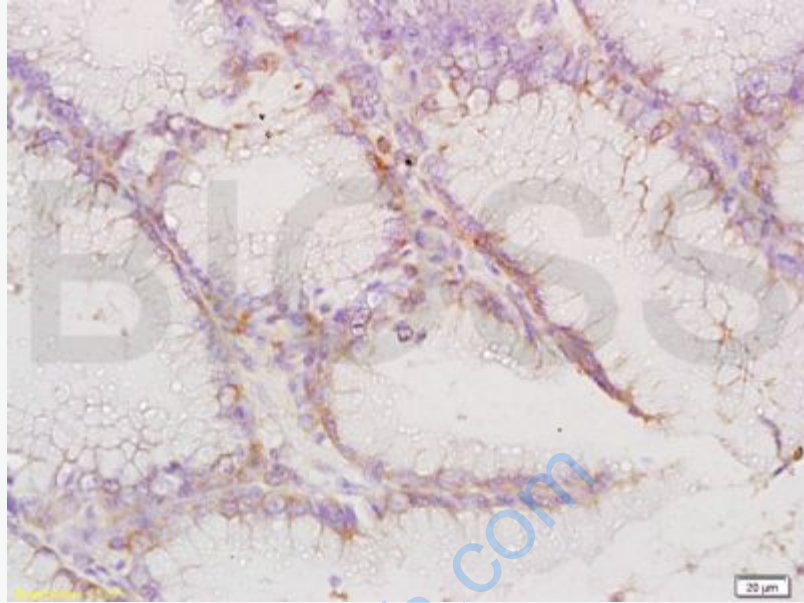
Sample: Bones (Mouse) Lysate at 40 ug

Primary: Anti- CCR-1 (SL1169R) at 1/300 dilution

Secondary: IRDye800CW Goat Anti-Rabbit IgG at 1/10000 dilution

Predicted band size: 40 kD

Observed band size: 45 kD



Tissue/cell: human gastric carcinoma; 4% Paraformaldehyde-fixed and paraffin-embedded;

Antigen retrieval: citrate buffer ( 0.01M, pH 6.0 ), Boiling bathing for 15min; Block endogenous peroxidase by 3% Hydrogen peroxide for 30min; Blocking buffer (normal goat serum,C-0005) at 37°C for 20 min;

Incubation: Anti-CCR1 Polyclonal Antibody, Unconjugated(SL1169R) 1:200, overnight at 4°C, followed by conjugation to the secondary antibody(SP-0023) and DAB(C-0010) staining