



Rabbit Anti-CTRP5 antibody

SL11717R

Product Name:	CTRP5
Chinese Name:	补体C1q和Tumour坏死因子相关蛋白5抗体
Alias:	C1q and tumor necrosis factor related protein 5; C1QTNF5; Complement C1q tumor necrosis factor related protein 5 precursor; LORD; C1QT5_HUMAN.
Organism Species:	Rabbit
Clonality:	Polyclonal
React Species:	Human,Mouse,Rat,Dog,Pig,Cow,Rabbit,
Applications:	ELISA=1:500-1000IHC-P=1:400-800IHC-F=1:400-800ICC=1:100-500IF=1:100-500 (Paraffin sections need antigen repair) not yet tested in other applications. optimal dilutions/concentrations should be determined by the end user.
Molecular weight:	24kDa
Cellular localization:	Secretory protein
Form:	Lyophilized or Liquid
Concentration:	1mg/ml
immunogen:	KLH conjugated synthetic peptide derived from human CTRP5:191-243/243
Lsotype:	IgG
Purification:	affinity purified by Protein A
Storage Buffer:	0.01M TBS(pH7.4) with 1% BSA, 0.03% Proclin300 and 50% Glycerol.
Storage:	Store at -20 °C for one year. Avoid repeated freeze/thaw cycles. The lyophilized antibody is stable at room temperature for at least one month and for greater than a year when kept at -20°C. When reconstituted in sterile pH 7.4 0.01M PBS or diluent of antibody the antibody is stable for at least two weeks at 2-4 °C.
PubMed:	PubMed
Product Detail:	Members of the C1q superfamily have diverse functions that are related to cell adhesion and basement membrane components. CTRP5 (Complement C1q tumor necrosis factor-related protein 5) is a 243 amino acid secreted and membrane-associated protein that contains a collagen-like domain and a C1q domain. CTRP5 is a short-chain collagen that is expressed in retinal pigment epithelium as well as brain, lung, liver and placenta. By forming an extracellular hexagonal lattice, CTRP5 facilitates the adhesion of basal

retinal pigment epithelium to Bruch's membrane, the innermost layer of the choroid. A mutation within the C1q domain of CTRP5 results in abnormal high molecular weight aggregate formation, which alters its structure and interactions. This mutation may result in the presentation of late-onset retinal degeneration (LORD), an autosomal dominant disorder that is characterized by punctate yellow-white deposits in the retinal fundus and night blindness.

Function:

Adipose tissue of an organism plays a major role in regulating physiologic and pathologic processes such as metabolism and immunity by producing and secreting a variety of bioactive molecules termed adipokines. One highly conserved family of adipokines is adiponectin/ACRP30 and its structural and functional paralogs, the C1q/tumor necrosis factor-alpha-related proteins (CTRPs) 1-7. Unlike adiponectin, which is expressed exclusively by differentiated adipocytes, the CTRPs are expressed in a wide variety of tissues. These proteins are thought to act mainly on liver and muscle tissue to control glucose and lipid metabolism. An analysis of the crystal structure of adiponectin revealed a structural and evolutionary link between TNF and C1q-containing proteins, suggesting that these proteins arose from a common ancestral innate immunity gene. CTRP5 has been suggested to be involved in age-related macular degeneration.

Subcellular Location:

Secreted

DISEASE:

Defects in C1QTNF5 are a cause of late-onset retinal degeneration (LORD) [MIM:605670]. LORD is an autosomal dominant disorder characterized by onset in the fifth to sixth decade with night blindness and punctate yellow-white deposits in the retinal fundus, progressing to severe central and peripheral degeneration, with choroidal neovascularization and chorioretinal atrophy.

Similarity:

Contains 1 C1q domain.
Contains 1 collagen-like domain.

SWISS:

Q9BXJ0

Gene ID:

114902

Database links:

[Entrez Gene: 114902](#)Human

[Entrez Gene: 235312](#)Mouse

[Entrez Gene: 315598](#)Rat

[Omin: 605670](#)Human

[SwissProt: Q9BXJ0](#)Human

[SwissProt: Q8K479](#)Mouse

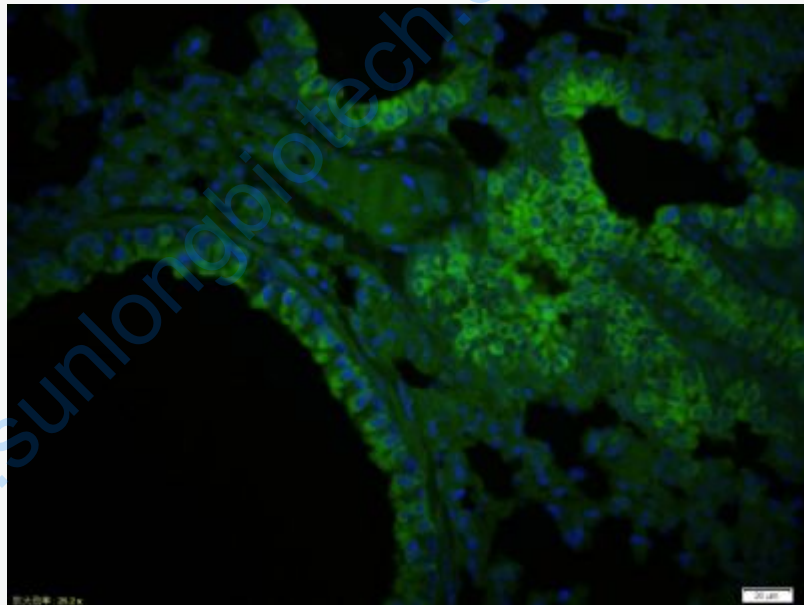
[SwissProt: Q5FVH0](#)Rat

[Unigene: 632102](#)Human

Important Note:

This product as supplied is intended for research use only, not for use in human, therapeutic or diagnostic applications.

Picture:



Paraformaldehyde-fixed, paraffin embedded (Mouse lung); Antigen retrieval by boiling in sodium citrate buffer (pH6.0) for 15min; Blocking buffer (normal goat serum) at 37°C for 30min; Antibody incubation with (CTRP5) Polyclonal Antibody, Unconjugated (SL11717R) at 1:200 overnight at 4°C, followed by a conjugated Goat Anti-Rabbit IgG antibody (SL11717R) for 90 minutes, and DAPI for nuclei staining.