



Rabbit Anti-N-cadherin antibody

SL1172R

Product Name:	N-cadherin
Chinese Name:	N-钙粘附分子抗体
Alias:	Cadherin 2; Cadherin 2 N cadherin neuronal; Cadherin 2 type 1; Cadherin 2 type 1 N cadherin neuronal; cadherin 2 type 1 N-cadherin neuronal; Cadherin2; Calcium dependent adhesion protein neuronal; CD325; CD325 antigen; CDH2; CDHN; CDw325; CDw325 antigen; N cadherin 1; NCAD; Neural Cadherin; Neural Cadherin.
文献引用 PubMed :	<p>Specific References(2) SL1172R has been referenced in 2 publications.</p> <p>[IF=3.98]Liu, Wen-bin, et al. "Aberrant methylation accounts for cell adhesion-related gene silencing during 3-methylcholanthrene and diethylnitrosamine induced multistep rat lung carcinogenesis associated with overexpression of DNA methyltransferases 1 and 3a." Toxicology and applied pharmacology 251.1 (2011): 70-78.IHC-P;Rat. PubMed:21163286</p> <p>[IF=3.26]Park, Honghyun, Doyun Kim, and Kuen Yong Lee. "Interaction-tailored cell aggregates in alginate hydrogels for enhanced chondrogenic differentiation."Journal of Biomedical Materials Research Part A (2016).IHC-P;Mouse. PubMed:27529335</p>
Organism Species:	Rabbit
Clonality:	Polyclonal
React Species:	Human,Mouse,Rat,Pig,Cow,Danio rerio
Applications:	WB=1:500-2000ELISA=1:500-1000IHC-P=1:400-800IHC-F=1:400-800IF=1:100-500 (Paraffin sections need antigen repair) not yet tested in other applications. optimal dilutions/concentrations should be determined by the end user.
Molecular weight:	100kDa
Cellular localization:	The cell membrane

Form:	Lyophilized or Liquid
Concentration:	1mg/ml
immunogen:	KLH conjugated synthetic peptide derived from human N-cadherin:701-800/905
Lsotype:	IgG
Purification:	affinity purified by Protein A
Storage Buffer:	0.01M TBS(pH7.4) with 1% BSA, 0.03% Proclin300 and 50% Glycerol.
Storage:	Store at -20 °C for one year. Avoid repeated freeze/thaw cycles. The lyophilized antibody is stable at room temperature for at least one month and for greater than a year when kept at -20°C. When reconstituted in sterile pH 7.4 0.01M PBS or diluent of antibody the antibody is stable for at least two weeks at 2-4 °C.
PubMed:	PubMed
Product Detail:	<p>This gene is a classical cadherin from the cadherin superfamily. The encoded protein is a calcium dependent cell-cell adhesion glycoprotein comprised of five extracellular cadherin repeats, a transmembrane region and a highly conserved cytoplasmic tail. The protein functions during gastrulation and is required for establishment of left-right asymmetry. At certain central nervous system synapses, presynaptic to postsynaptic adhesion is mediated at least in part by this gene product.</p> <p>Function: Cadherins are calcium dependent cell adhesion proteins. They preferentially interact with themselves in a homophilic manner in connecting cells; cadherins may thus contribute to the sorting of heterogeneous cell types. CDH2 may be involved in neuronal recognition mechanism. In hippocampal neurons, may regulate dendritic spine density.</p> <p>Subcellular Location: Cell membrane.</p> <p>Similarity: Contains 5 cadherin domains.</p> <p>SWISS: P19022</p> <p>Gene ID: 1000</p> <p>Database links:</p> <p>Entrez Gene: 1000Human</p> <p>Entrez Gene: 281062Cow</p> <p>Entrez Gene: 12558Mouse</p> <p>Entrez Gene: 83501Rat</p> <p>Omim: 114020Human</p>

[SwissProt: P19022](#)Human

[SwissProt: P15116](#)Mouse

[SwissProt: Q9Z1Y3](#)Rat

[Unigene: 464829](#)Human

[Unigene: 606106](#)Human

[Unigene: 257437](#)Mouse

[Unigene: 23200](#)Rat

Important Note:

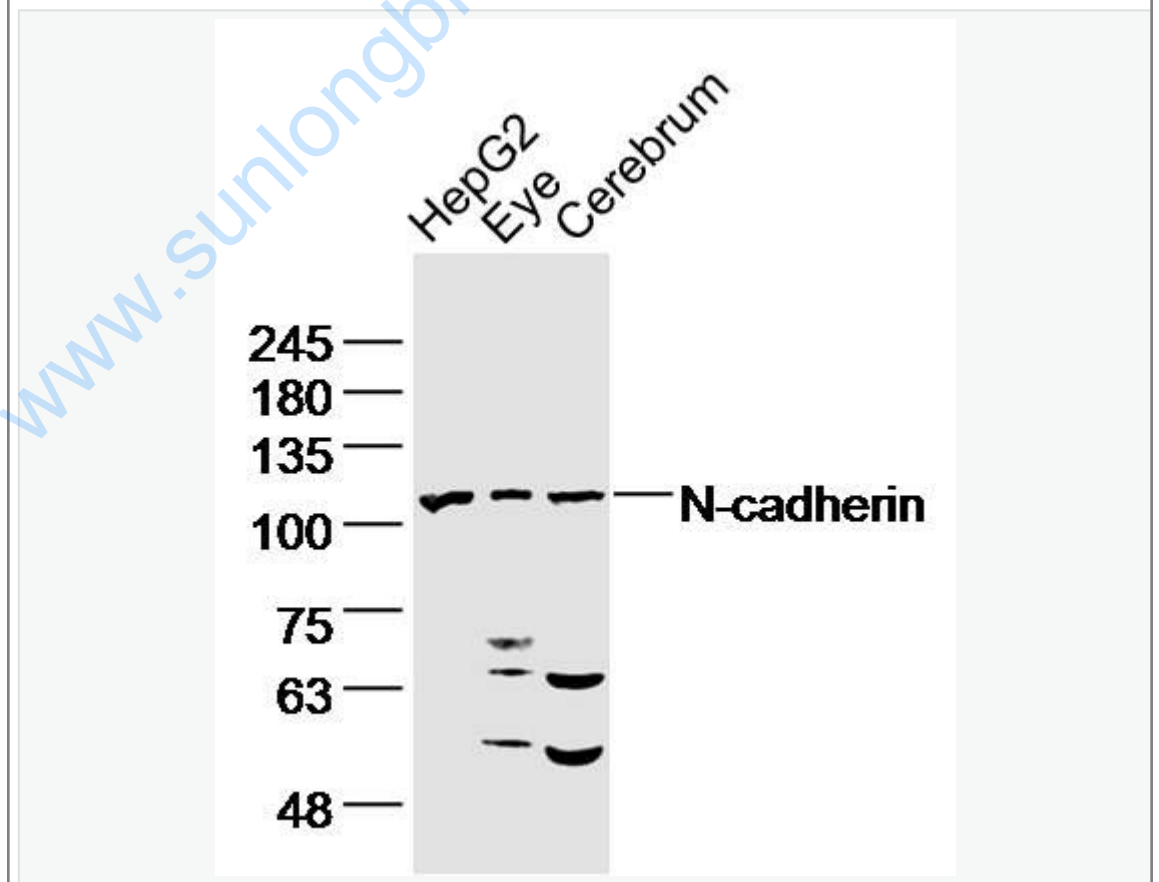
This product as supplied is intended for research use only, not for use in human, therapeutic or diagnostic applications.

细胞粘附蛋白 (Cell Adhesion Protein)

N-

钙粘附分子属于依赖钙离子的细胞间glycoprotein粘附分子的一部分,主要是参与细胞间同源性粘附,调控和介导细胞间相互反应。

Picture:



Sample:

HepG2 Cell Lysate at 40 ug

Eye (Mouse) Lysate at 40 ug

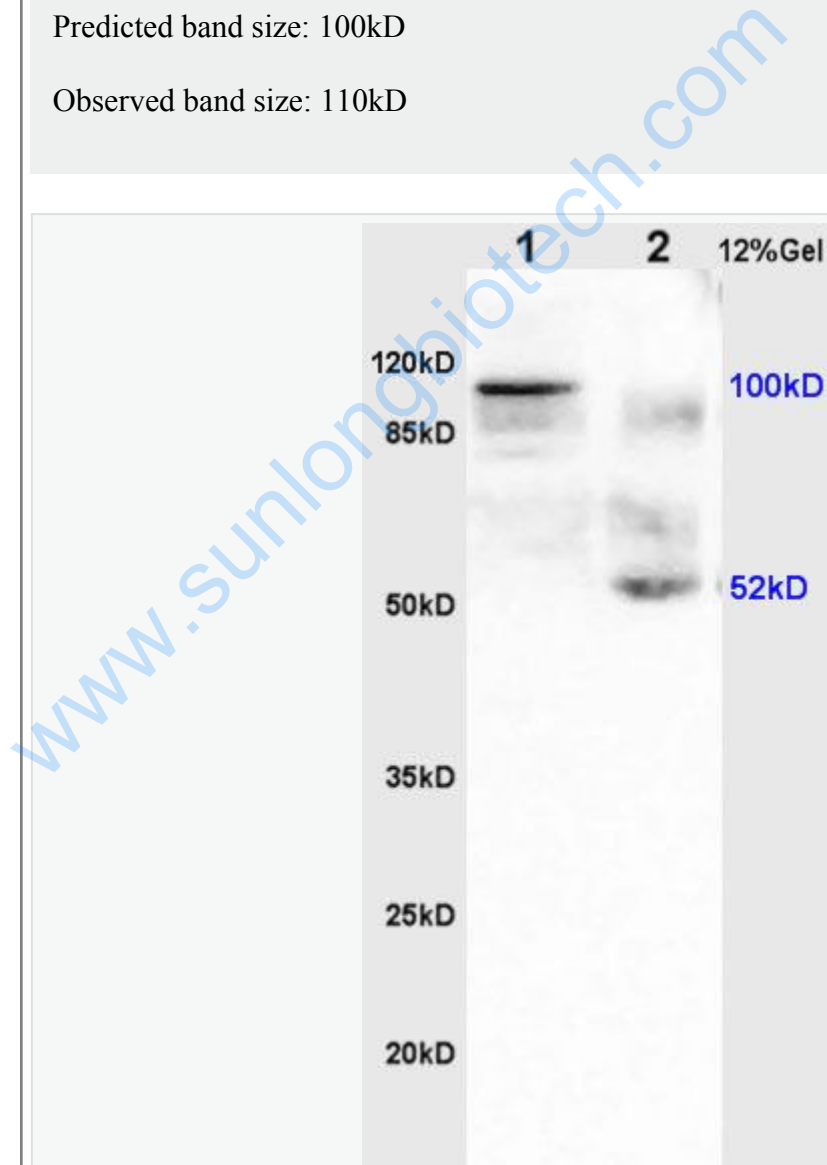
Cerebrum (Mouse) Lysate at 40 ug

Primary: Anti- N-cadherin (SL1172R)at 1/300 dilution

Secondary: IRDye800CW Goat Anti-Rabbit IgG at 1/20000 dilution

Predicted band size: 100kD

Observed band size: 110kD



Sample:

Colon carcinoma(Human) lysate at 30ug;

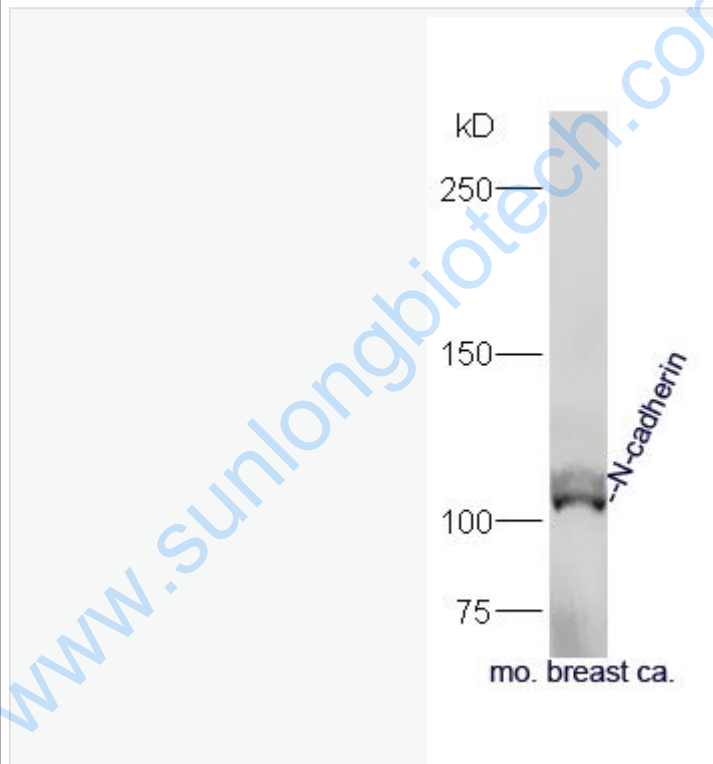
Brain(Rat) lysate at 30ug;

Primary: Anti-CDH2/N-cadherin (SL1172R) at 1:200 dilution;

Secondary: HRP conjugated Goat Anti-Rabbit IgG(SL1172R) at 1: 3000 dilution;

Predicted band size : 100kD

Observed band size : 100kD



Sample:

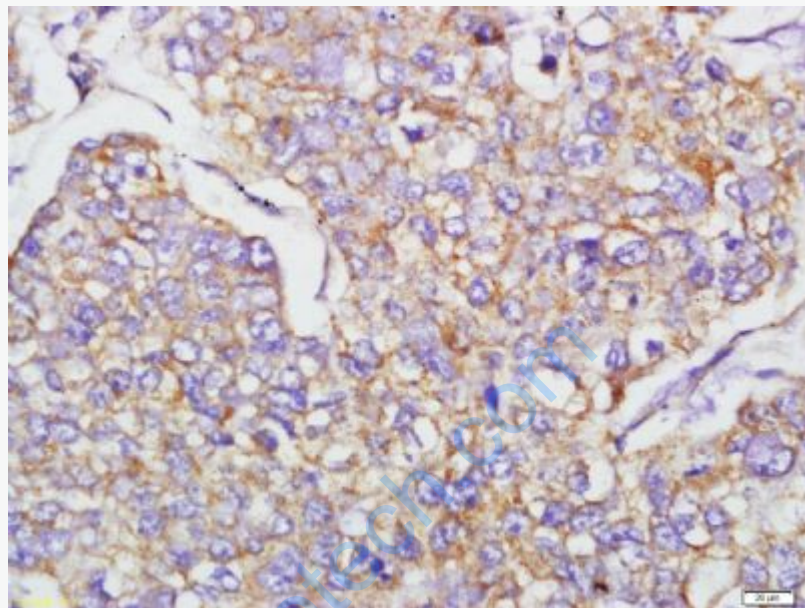
Breast ca (Mouse) Lysate at 40 ug

Primary: Anti-N-cadherin (SL1172R) at 1/300 dilution

Secondary: IRDye800CW Goat Anti-Rabbit IgG at 1/20000 dilution

Predicted band size: 100 kD

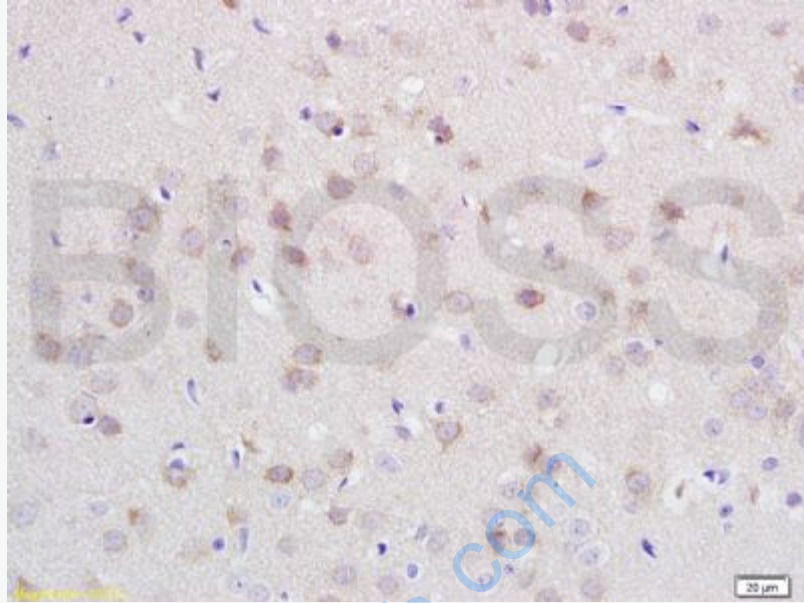
Observed band size: 105 kD



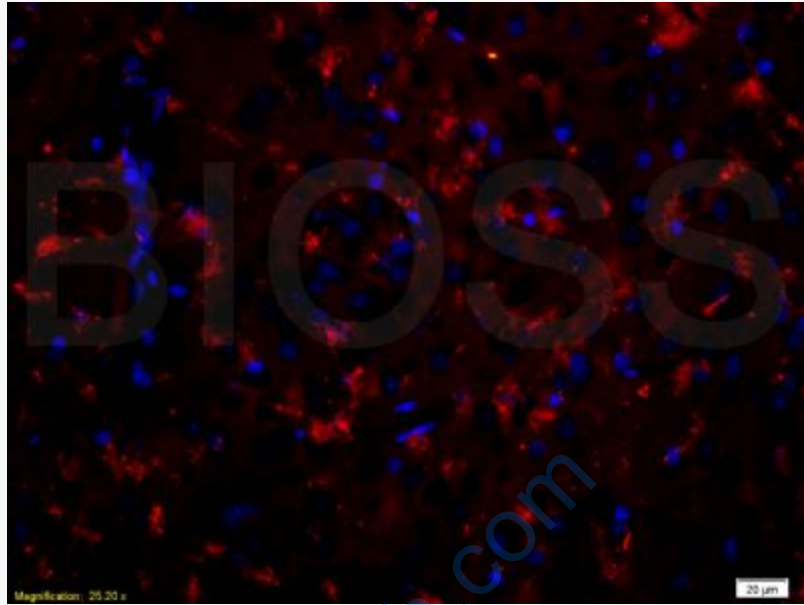
Tissue/cell: human lung carcinoma; 4% Paraformaldehyde-fixed and paraffin-embedded;

Antigen retrieval: citrate buffer (0.01M, pH 6.0), Boiling bathing for 15min; Block endogenous peroxidase by 3% Hydrogen peroxide for 30min; Blocking buffer (normal goat serum,C-0005) at 37°C for 20 min;

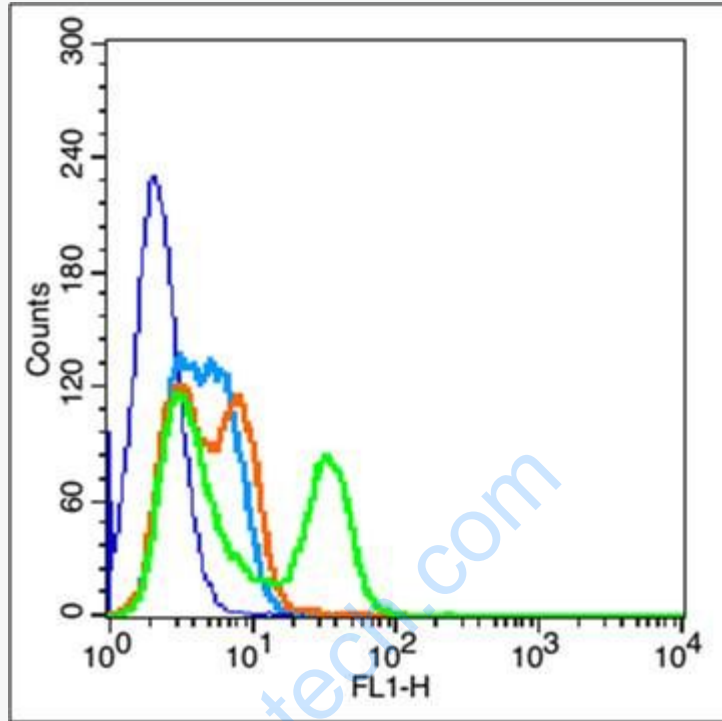
Incubation: Anti-N-cadherin Polyclonal Antibody, Unconjugated(SL1172R) 1:400, overnight at 4°C, followed by conjugation to the secondary antibody(SP-0023) and DAB(C-0010) staining



Tissue/cell: rat brain tissue; 4% Paraformaldehyde-fixed and paraffin-embedded;
Antigen retrieval: citrate buffer (0.01M, pH 6.0), Boiling bathing for 15min; Block endogenous peroxidase by 3% Hydrogen peroxide for 30min; Blocking buffer (normal goat serum,C-0005) at 37°C for 20 min;
Incubation: Anti-N-cadherin Polyclonal Antibody, Unconjugated(SL1172R) 1:200, overnight at 4°C, followed by conjugation to the secondary antibody(SP-0023) and DAB(C-0010) staining



Tissue/cell: rat brain tissue;4% Paraformaldehyde-fixed and paraffin-embedded;
Antigen retrieval: citrate buffer (0.01M, pH 6.0), Boiling bathing for 15min;
Blocking buffer (normal goat serum,C-0005) at 37°C for 20 min;
Incubation: Anti-N-cadherin Polyclonal Antibody, Unconjugated(SL1172R) 1:200,
overnight at 4°C; The secondary antibody was Goat Anti-Rabbit IgG, PE
conjugated(SL1172R)used at 1:200 dilution for 40 minutes at 37°C.
DAPI(5ug/ml,blue,C-0033) was used to stain the cell nuclei



Blank control: Hepg2(blue).

Primary Antibody: Rabbit Anti-E cadherin antibody (SL1172R); Dilution: 3 μ g in 100 μ L 1X PBS containing 0.5% BSA;

Isotype Control Antibody: Rabbit IgG(orange) ,used under the same conditions;

Secondary Antibody: Goat anti-rabbit IgG-FITC(white blue), Dilution: 1:200 in 1 X PBS containing 0.5% BSA.

Protocol

The cells were fixed with 2% paraformaldehyde for 10 min at 37°C. Primary antibody (SL1172R) were incubated for 30 min at room temperature, followed by 1 X PBS containing 0.5% BSA + 1 0% goat serum (1 hour) to block non-specific protein-protein interactions. Then the Goat Anti-rabbit IgG/FITC antibody was added into the blocking buffer mentioned above to react with the primary antibody at 1/200 dilution for 40 min at room temperature. Acquisition of 20,000 events was

	performed.
--	------------

www.sunlongbiotech.com