



Rabbit Anti-Engrailed 1 antibody

SL11744R

Product Name:	Engrailed 1
Chinese Name:	同源盒蛋白转录因子EN1抗体
Alias:	EN1 / Engrailed 1; En 1; EN1; EN-1; Engrailed 1; Engrailed; Engrailed homeobox 1; Engrailed homolog 1; HME1_HUMAN; Homeobox protein en-1; Homeobox protein engrailed 1; Homeobox protein engrailed-1; Hu-En-1; Mo-en.1.
Organism Species:	Rabbit
Clonality:	Polyclonal
React Species:	Human,Mouse,Rat,Chicken,Dog,Pig,Cow,Horse,Sheep,
Applications:	ELISA=1:500-1000IHC-P=1:400-800IHC-F=1:400-800Flow-Cyt=1µg/TestICC=1:100-500IF=1:100-500 (Paraffin sections need antigen repair) not yet tested in other applications. optimal dilutions/concentrations should be determined by the end user.
Molecular weight:	40kDa
Cellular localization:	The nucleus
Form:	Lyophilized or Liquid
Concentration:	1mg/ml
immunogen:	KLH conjugated synthetic peptide derived from human EN1/Engrailed 1:351-420/392
Lsotype:	IgG
Purification:	affinity purified by Protein A
Storage Buffer:	0.01M TBS(pH7.4) with 1% BSA, 0.03% Proclin300 and 50% Glycerol.
Storage:	Store at -20 °C for one year. Avoid repeated freeze/thaw cycles. The lyophilized antibody is stable at room temperature for at least one month and for greater than a year when kept at -20°C. When reconstituted in sterile pH 7.4 0.01M PBS or diluent of antibody the antibody is stable for at least two weeks at 2-4 °C.
PubMed:	PubMed
Product Detail:	The engrailed-1 gene, EN1, a murine homolog of the Drosophila homeobox gene engrailed (EN), is required for midbrain and cerebellum development and dorsal/ventral patterning of the limbs as well as apical ectodermal ridge formation. In Drosophila, the EN gene plays an important role during development in segmentation, where it is required for the formation of posterior compartments. Human EN-1 and EN-2 are

homeodomain-containing proteins and have been implicated in the control of pattern formation during development of the central nervous system. Different mutations in the mouse homo-logs, EN-1 and EN-2, produce different developmental defects that frequently are lethal. EN-1 is highly expressed by essentially all dopaminergic neurons in the substantia nigra and ventral tegmentum. EN-1 and EN-2 regulate expression of a-synuclein, a gene that is genetically linked to Parkinson's disease.

Subcellular Location:

Nucleus.

Similarity:

Belongs to the engrailed homeobox family.
Contains 1 homeobox DNA-binding domain.

SWISS:

Q05925

Gene ID:

2019

Database links:

[Entrez Gene: 2019](#) Human

[Entrez Gene: 13798](#) Mouse

[Entrez Gene: 685360](#) Rat

[Omim: 131290](#) Human

[SwissProt: Q05925](#) Human

[SwissProt: P09065](#) Mouse

[Unigene: 271977](#) Human

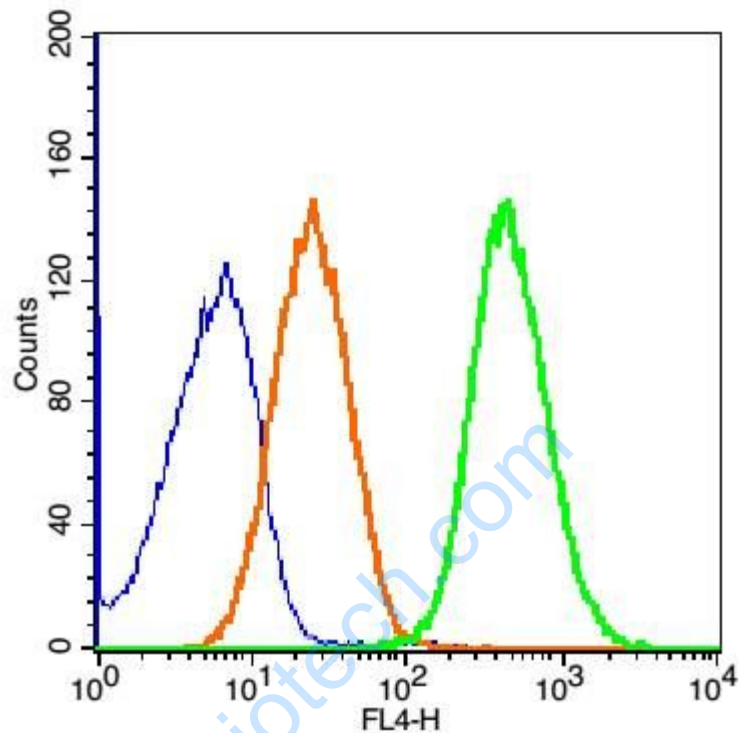
[Unigene: 2657](#) Mouse

[Unigene: 162354](#) Rat

Important Note:

This product as supplied is intended for research use only, not for use in human, therapeutic or diagnostic applications.

Picture:



Blank control(blue): Raji Cells(fixed with 2% paraformaldehyde (10 min) and then permeabilized with ice-cold 90% methanol for 30 min on ice).

Primary Antibody: Rabbit Anti-Engrailed 1/AF647 Conjugated antibody (SL11744R), Dilution: 0.2 μ g in 100 μ L 1X PBS containing 0.5% BSA;

Isotype Control Antibody: Rabbit IgG/FITC(orange) ,used under the same conditions.