



Rabbit Anti-SCGN antibody

SL11754R

Product Name:	SCGN
Chinese Name:	钙结合样蛋白/神经内分泌Tumour标记物抗体
Alias:	Calbindin like; CALBL; DJ501N12.8; Scgn; SECRET; Secretagogen; Secretagogen EF hand calcium binding protein; SEGN; SEGN_HUMAN; Setagin.
Organism Species:	Rabbit
Clonality:	Polyclonal
React Species:	Human,Mouse,Rat,Dog,Pig,Cow,Horse,Sheep,
Applications:	ELISA=1:500-1000IHC-P=1:400-800IHC-F=1:400-800ICC=1:100-500IF=1:100-500 (Paraffin sections need antigen repair) not yet tested in other applications. optimal dilutions/concentrations should be determined by the end user.
Molecular weight:	32kDa
Cellular localization:	cytoplasmicThe cell membraneSecretory protein
Form:	Lyophilized or Liquid
Concentration:	1mg/ml
immunogen:	KLH conjugated synthetic peptide derived from human Secretagogen:221-276/276
Lsotype:	IgG
Purification:	affinity purified by Protein A
Storage Buffer:	0.01M TBS(pH7.4) with 1% BSA, 0.03% Proclin300 and 50% Glycerol.
Storage:	Store at -20 °C for one year. Avoid repeated freeze/thaw cycles. The lyophilized antibody is stable at room temperature for at least one month and for greater than a year when kept at -20°C. When reconstituted in sterile pH 7.4 0.01M PBS or diluent of antibody the antibody is stable for at least two weeks at 2-4 °C.
PubMed:	PubMed
Product Detail:	The encoded protein is a secreted calcium-binding protein which is found in the cytoplasm. It is related to calbindin D-28K and calretinin. This protein is thought to be involved in KCL-stimulated calcium flux and cell proliferation. [provided by RefSeq, Jul 2008]
	Subcellular Location:

Cytoplasm. Secreted. Cytoplasmic vesicle, secretory vesicle membrane; Peripheral membrane protein; Cytoplasmic side. Note=Predominantly cytoplasmic. A small proportion is associated with secretory granules and membrane fractions. Detectable in human serum after ischemic neuronal damage.

Tissue Specificity:

Expressed at high levels in the pancreatic islets of Langerhans and to a much lesser extent in the gastrointestinal tract (stomach, small intestine and colon), the adrenal medulla and cortex and the thyroid C-cells. In the brain, the expression is restricted to distinct subtypes of neurons with highest expression in the molecular layer of the cerebellum (stellate and basket cells), in the anterior part of the pituitary gland, in the thalamus, in the hypothalamus and in a subgroup of neocortical neurons.

Similarity:

Contains 6 EF-hand domains.

SWISS:

O76038

Gene ID:

10590

Database links:

[Entrez Gene: 10590](#) Human

[Entrez Gene: 306942](#) Rat

[Omic: 609202](#) Human

[SwissProt: O76038](#) Human

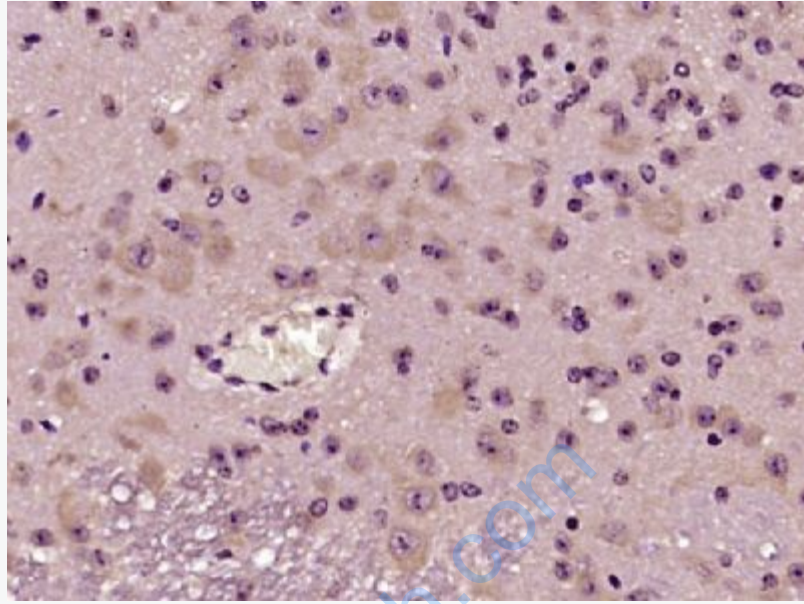
[SwissProt: Q6R556](#) Rat

[Unigene: 116428](#) Human

[Unigene: 53156](#) Rat

Important Note:

This product as supplied is intended for research use only, not for use in human, therapeutic or diagnostic applications.



Picture:

Paraformaldehyde-fixed, paraffin embedded (mouse cerebellum tissue); Antigen retrieval by boiling in sodium citrate buffer (pH6.0) for 15min; Block endogenous peroxidase by 3% hydrogen peroxide for 20 minutes; Blocking buffer (normal goat serum) at 37°C for 30min; Antibody incubation with (SCGN) Polyclonal Antibody, Unconjugated (SL11754R) at 1:400 overnight at 4°C, followed by operating according to SP Kit(Rabbit) (sp-0023) instructions and DAB staining.