



## Rabbit Anti-phospho-LRRK2 (Thr1410) antibody

SL11786R

<b>Product Name:</b>	phospho-LRRK2 (Thr1410)
<b>Chinese Name:</b>	磷酸化富亮氨酸重复激酶2抗体
<b>Alias:</b>	LRRK2 (phospho T1410); LRRK2 (phospho Thr1410); p-LRRK2 (Thr1410); Dardarin; Leucine rich repeat kinase 2; LRRK 2; LRRK-2; LRRK2; PARK 8; PARK8; ROCO 2; ROCO-2; ROCO2; Leucine-rich repeat serine/threonine-protein kinase 2; Dardarin; LRRK2_HUMAN; augmented in rheumatoid arthritis 17; AURA17; Leucine rich repeat kinase 2; RIPK7.
<b>Organism Species:</b>	Rabbit
<b>Clonality:</b>	Polyclonal
<b>React Species:</b>	Human,Mouse,Rat,Dog,Pig,Cow,Horse,Rabbit,
<b>Applications:</b>	ELISA=1:500-1000IHC-P=1:400-800IHC-F=1:400-800ICC=1:100-500IF=1:100-500 (Paraffin sections need antigen repair) not yet tested in other applications. optimal dilutions/concentrations should be determined by the end user.
<b>Molecular weight:</b>	286kDa
<b>Cellular localization:</b>	cytoplasmicThe cell membrane
<b>Form:</b>	Lyophilized or Liquid
<b>Concentration:</b>	1mg/ml
<b>immunogen:</b>	KLH conjugated synthesised phosphopeptide derived from human LRRK2 around the phosphorylation site of Thr1410:FM(p-T)QR
<b>Lsotype:</b>	IgG
<b>Purification:</b>	affinity purified by Protein A
<b>Storage Buffer:</b>	0.01M TBS(pH7.4) with 1% BSA, 0.03% Proclin300 and 50% Glycerol.
<b>Storage:</b>	Store at -20 °C for one year. Avoid repeated freeze/thaw cycles. The lyophilized antibody is stable at room temperature for at least one month and for greater than a year when kept at -20°C. When reconstituted in sterile pH 7.4 0.01M PBS or diluent of antibody the antibody is stable for at least two weeks at 2-4 °C.
<b>PubMed:</b>	<a href="#">PubMed</a>
<b>Product Detail:</b>	LRRK2 (Dardarin) is encoded by the gene LRRK2. Genetic mutations of LRRK2 have

been linked to Parkinsonism and synucleinopathies. LRRK2 belongs to the ROCO protein family and includes a protein kinase domain of the MAPKKK class and several other major functional domains.

**Function:**

May play a role in the phosphorylation of proteins central to Parkinson disease. Phosphorylates PRDX3. May also have GTPase activity.

**Subunit:**

Interacts with PARK2. Interacts with PRDX3. Interacts with TPCN2.

**Subcellular Location:**

Cytoplasm. Membrane. Mitochondrion. Localized in the cytoplasm and associated with cellular membrane structures. Associates with the mitochondrial outer membrane.

**Tissue Specificity:**

Expressed throughout the adult brain, but at a lower level than in heart and liver. Also expressed in placenta, lung, skeletal muscle, kidney and pancreas. In the brain, expressed in the cerebellum, cerebral cortex, medulla, spinal cord occipital pole, frontal lobe, temporal lobe and putamen. Expression is particularly high in brain dopaminergic areas.

**DISEASE:**

Defects in LRRK2 are the cause of Parkinson disease type 8 (PARK8) [MIM:607060]. A slowly progressive neurodegenerative disorder characterized by bradykinesia, rigidity, resting tremor, postural instability, neuronal loss in the substantia nigra, and the presence of neurofibrillary MAPT (tau)-positive and Lewy bodies in some patients.

**Similarity:**

Belongs to the protein kinase superfamily. TKL Ser/Thr protein kinase family. Contains 12 LRR (leucine-rich) repeats. Contains 1 protein kinase domain. Contains 1 Roc domain.

**SWISS:**

Q5S007

**Gene ID:**

120892

**Database links:**

[Entrez Gene: 120892](#)Human

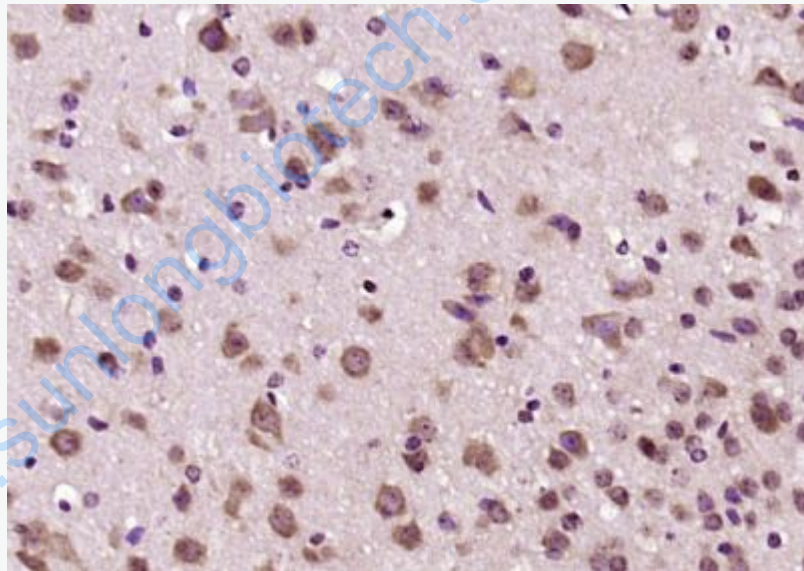
[Entrez Gene: 66725](#)Mouse

[Entrez Gene: 300160](#)Rat

[Omim: 609007](#)Human  
[SwissProt: Q5S007](#)Human  
[SwissProt: Q5S006](#)Mouse  
[Unigene: 187636](#)Human  
[Unigene: 37558](#)Mouse  
[Unigene: 213971](#)Rat

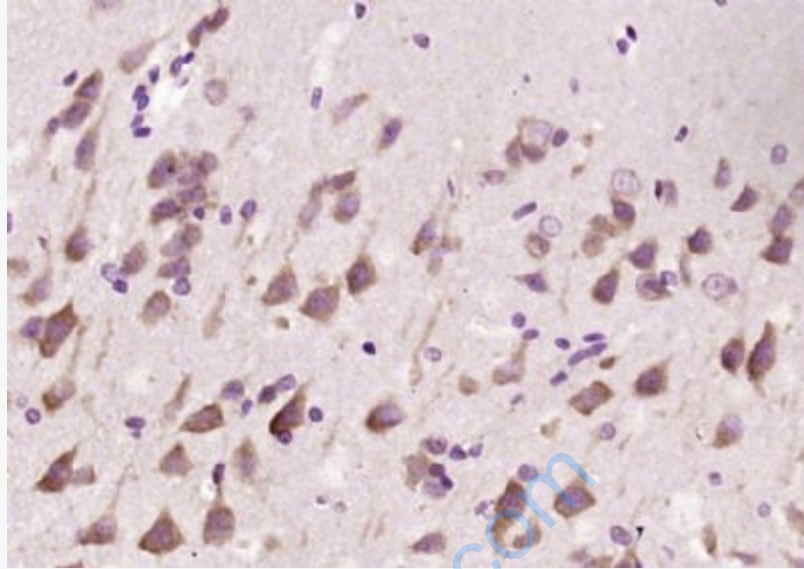
**Important Note:**

This product as supplied is intended for research use only, not for use in human, therapeutic or diagnostic applications.



**Picture:**

Paraformaldehyde-fixed, paraffin embedded (mouse brain); Antigen retrieval by boiling in sodium citrate buffer (pH6.0) for 15min; Block endogenous peroxidase by 3% hydrogen peroxide for 20 minutes; Blocking buffer (normal goat serum) at 37°C for 30min; Antibody incubation with (phospho-LRRK2 (Thr1410)) Polyclonal Antibody, Unconjugated (SL11786R) at 1:200 overnight at 4°C, followed by operating according to SP Kit(Rabbit) (sp-0023) instructions and DAB staining.



Paraformaldehyde-fixed, paraffin embedded (rat brain); Antigen retrieval by boiling in sodium citrate buffer (pH6.0) for 15min; Block endogenous peroxidase by 3% hydrogen peroxide for 20 minutes; Blocking buffer (normal goat serum) at 37°C for 30min; Antibody incubation with (phospho-LRRK2 (Thr1410)) Polyclonal Antibody, Unconjugated (SL11786R) at 1:200 overnight at 4°C, followed by operating according to SP Kit(Rabbit) (sp-0023) instructions and DAB staining.