



Rabbit Anti-CRMP3 antibody

SL11821R

| | |
|-------------------------------|---|
| Product Name: | CRMP3 |
| Chinese Name: | 二氢嘧啶酶相关蛋白3抗体 |
| Alias: | Collapsin response mediator protein 3; CRMP 3; CRMP-3; CRMP3; Dihydropyrimidinase like 4; Dihydropyrimidinase related protein 4; Dihydropyrimidinase-related protein 4; DPYL4_HUMAN; DPYSL4; DRP 4; DRP-4; DRP4; ULIP 4; ULIP-4; ULIP4; UNC33 like phosphoprotein 4; UNC33-like phosphoprotein 4. |
| Organism Species: | Rabbit |
| Clonality: | Polyclonal |
| React Species: | Human,Mouse,Rat,Cow, |
| Applications: | WB=1:500-2000ELISA=1:500-1000IHC-P=1:400-800IHC-F=1:400-800ICC=1:100-500IF=1:100-500 (Paraffin sections need antigen repair) not yet tested in other applications. optimal dilutions/concentrations should be determined by the end user. |
| Molecular weight: | 62kDa |
| Cellular localization: | cytoplasmic |
| Form: | Lyophilized or Liquid |
| Concentration: | 1mg/ml |
| immunogen: | KLH conjugated synthetic peptide derived from human CRMP3:6-100/572 |
| Lsotype: | IgG |
| Purification: | affinity purified by Protein A |
| Storage Buffer: | 0.01M TBS(pH7.4) with 1% BSA, 0.03% Proclin300 and 50% Glycerol. |
| Storage: | Store at -20 °C for one year. Avoid repeated freeze/thaw cycles. The lyophilized antibody is stable at room temperature for at least one month and for greater than a year when kept at -20°C. When reconstituted in sterile pH 7.4 0.01M PBS or diluent of antibody the antibody is stable for at least two weeks at 2-4 °C. |
| PubMed: | PubMed |
| Product Detail: | Collapsin response mediator proteins (CRMPs), including CRMP-1 (DRP-1), CRMP-2 (DRP-2 or TOAD64), CRMP-3 (DRP-4), CRMP-4 (DRP-3) and CRMP-5 (DRP-5), mediate signal transduction after exposure of neural cells to the axon guidance molecule |

Semaphorin 3A (SEMA3A)/collapsin. CRMPs are present in the developing cerebral cortex and neocortical neurons and are responsive to SEMA3A. In the adult brain, the expression of CRMPs is dramatically downregulated. However, they remain expressed in structures that retain their capacity for differentiation and plasticity. CRMP-3 is expressed transiently in developing spinal cord and selectively in the postnatal cerebellum. It is cleaved by Calpain to produce a p54 N-terminal fragment. This cleavage product translocates to the nucleus and induces neuronal death in response to excitotoxicity and cerebral ischemia.

Function:

Necessary for signaling by class 3 semaphorins and subsequent remodeling of the cytoskeleton. Plays a role in axon guidance, neuronal growth cone collapse and cell migration.

Subcellular Location:

Cytoplasm.

Tissue Specificity:

Belongs to the DHOase family. Hydantoinase/dihydropyrimidinase subfamily.

Post-translational modifications:

Phosphorylated upon DNA damage, probably by ATM or ATR.

Similarity:

Belongs to the DHOase family. Hydantoinase/dihydropyrimidinase subfamily.

SWISS:

O14531

Gene ID:

10570

Database links:

[Entrez Gene: 10570](#)Human

[Entrez Gene: 26757](#)Mouse

[Entrez Gene: 25417](#)Rat

[Omim: 608407](#)Human

[SwissProt: O14531](#)Human

[SwissProt: O35098](#)Mouse

[SwissProt: Q62951](#)Rat

[Unigene: 100058](#)Human

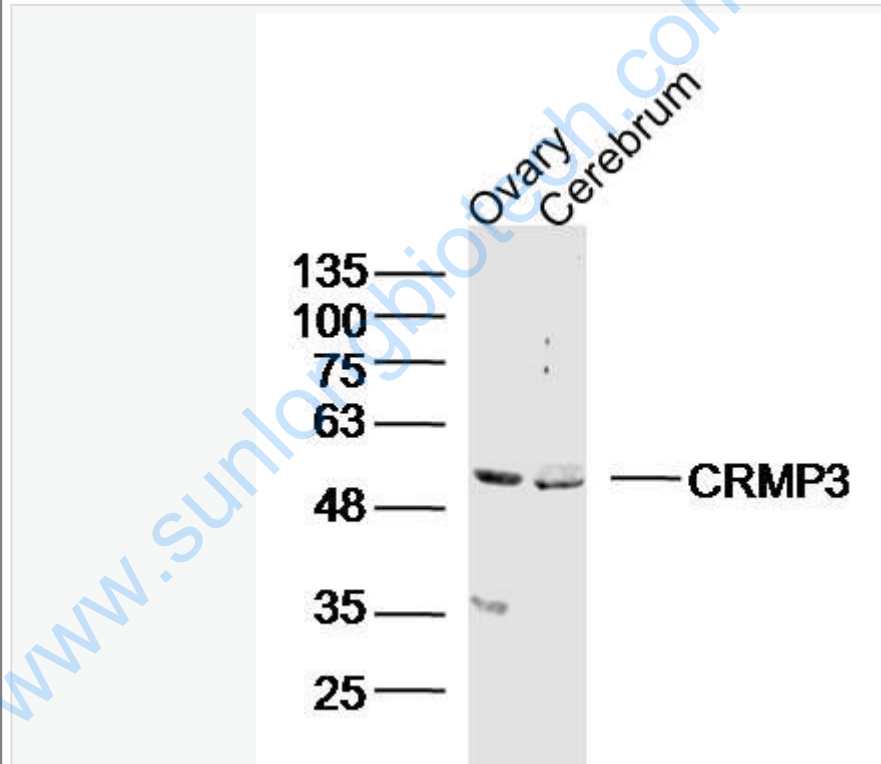
[Unigene: 250414](#)Mouse

[Unigene: 10503](#)Rat

Important Note:

This product as supplied is intended for research use only, not for use in human, therapeutic or diagnostic applications.

Picture:



Sample:

Ovary(Mouse)Lysate at 40 ug

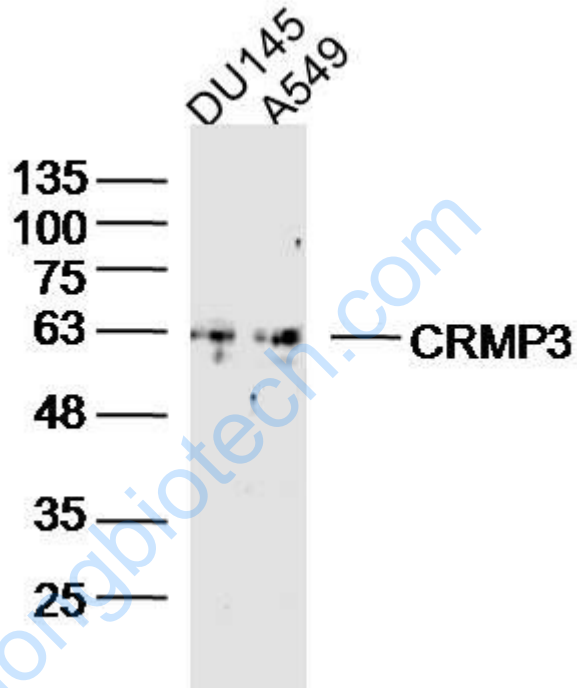
Cerebrum (Mouse)Lysate at 40 ug

Primary: Anti-CRMP3(SL11821R)at 1/300 dilution

Secondary: IRDye800CW Goat Anti-RabbitIgG at 1/20000 dilution

Predicted band size: 62kD

Observed band size: 62kD



Sample:

DU145 (Human) Cell Lysate at 40 ug

A549 (Human) Cell Lysate at 40 ug

Primary: Anti-CRMP3(SL11821R) at 1/300 dilution

Secondary: IRDye800CW Goat Anti-RabbitIgG at 1/20000 dilution

Predicted band size: 62kD

Observed band size: 62kD