



## Rabbit Anti-Chordin antibody

SL11831R

<b>Product Name:</b>	Chordin
<b>Chinese Name:</b>	原肠胚双向形成相关蛋白抗体
<b>Alias:</b>	Chordin; Chrd; CHRD_HUMAN; MGC133038; Shortgastrulation protein; SOG.
<b>Organism Species:</b>	Rabbit
<b>Clonality:</b>	Polyclonal
<b>React Species:</b>	Human,Mouse,Rat,Dog,Pig,Cow,Horse,Rabbit,Sheep,
<b>Applications:</b>	WB=1:500-2000ELISA=1:500-1000IHC-P=1:400-800IHC-F=1:400-800ICC=1:100-500IF=1:100-500 (Paraffin sections need antigen repair) not yet tested in other applications. optimal dilutions/concentrations should be determined by the end user.
<b>Molecular weight:</b>	99kDa
<b>Cellular localization:</b>	Secretory protein
<b>Form:</b>	Lyophilized or Liquid
<b>Concentration:</b>	1mg/ml
<b>immunogen:</b>	KLH conjugated synthetic peptide derived from human Chordin:412-190/951
<b>Lsotype:</b>	IgG
<b>Purification:</b>	affinity purified by Protein A
<b>Storage Buffer:</b>	0.01M TBS(pH7.4) with 1% BSA, 0.03% Proclin300 and 50% Glycerol.
<b>Storage:</b>	Store at -20 °C for one year. Avoid repeated freeze/thaw cycles. The lyophilized antibody is stable at room temperature for at least one month and for greater than a year when kept at -20°C. When reconstituted in sterile pH 7.4 0.01M PBS or diluent of antibody the antibody is stable for at least two weeks at 2-4 °C.
<b>PubMed:</b>	<a href="#">PubMed</a>
<b>Product Detail:</b>	The patterning of the CNS relies on the interaction of multiple signaling molecules such as Sonic Hedgehog, Wnts, and BMPs and their antagonists Chordin and Noggin. At midgastrula, expression of Noggin overlaps that of Chordin. Chordin is a key developmental protein that dorsalizes early vertebrate embryonic tissues by binding to ventralizing TGF-beta-like bone morphogenetic proteins and sequestering them in latent complexes. The gene which encodeschordin maps to human chromosome 3q27. Noggin is a secreted protein that binds and inactivates members of the transforming growth

factor-beta (TGF-beta) superfamily of signaling proteins, such as BMP-2,4,7. The gene which encodes noggin maps to human chromosome 17q22.

**Function:**

Dorsalizing factor. Key developmental protein that dorsalizes early vertebrate embryonic tissues by binding to ventralizing TGF-beta family bone morphogenetic proteins (BMPs) and sequestering them in latent complexes.

**Subunit:**

Interacts with TWSG1 and/or BMP4

**Subcellular Location:**

Secreted.

**Tissue Specificity:**

Expressed at the highest level in liver.

**Post-translational modifications:**

Cleaved by tolloid proteases; cleavage participates to dorsoventral patterning during early development.

**Similarity:**

Belongs to the chordin family.

Contains 4 CHRD domains.

Contains 4 VWFC domains.

**SWISS:**

Q9H2X0

**Gene ID:**

8646

**Database links:**

[Entrez Gene: 8646](#)Human

[Entrez Gene: 12667](#)Mouse

[Entrez Gene: 117275](#)Rat

[Oimim: 603475](#)Human

[SwissProt: Q9H2X0](#)Human

[SwissProt: Q9Z0E2](#)Mouse

[SwissProt: Q63148](#)Rat

[Unigene: 166186](#)Human

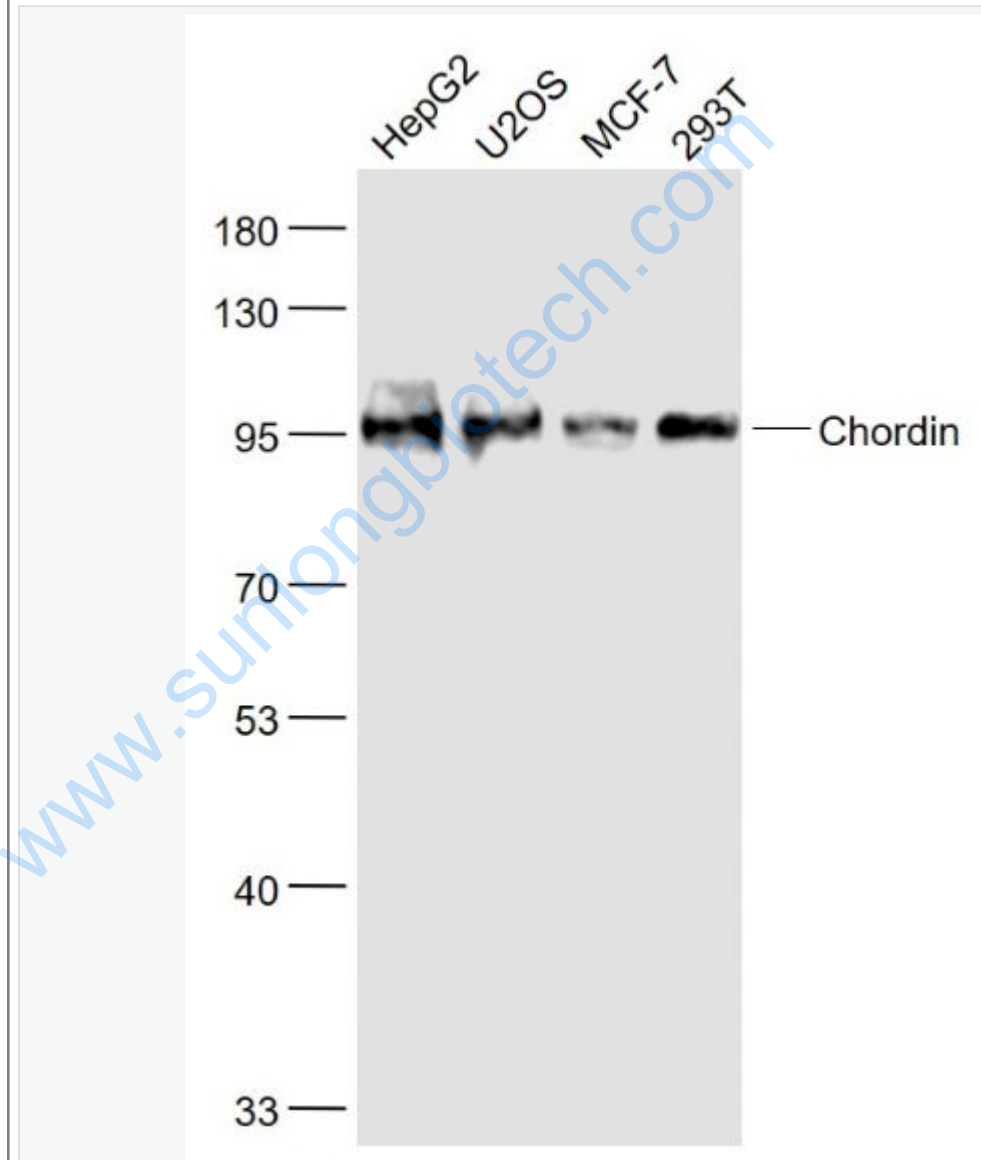
[Unigene: 20457](#)Mouse

[Unigene: 29459](#)Rat

**Important Note:**

This product as supplied is intended for research use only, not for use in human, therapeutic or diagnostic applications.

Picture:



Sample:

HepG2(Human) Cell Lysate at 30 ug

U2OS(Human) Cell Lysate at 30 ug

MCF-7(Human) Cell Lysate at 30 ug

293T(Human) Cell Lysate at 30 ug

Primary: Anti- Chordin (SL11831R) at 1/1000 dilution

Secondary: IRDye800CW Goat Anti-Rabbit IgG at 1/20000 dilution

Predicted band size: 99 kD

Observed band size: 96 kD

[www.sunlongbiotech.com](http://www.sunlongbiotech.com)