



## Rabbit Anti-GMF beta antibody

SL11845R

<b>Product Name:</b>	GMF beta
<b>Chinese Name:</b>	胶浆成熟因子 $\beta$ 抗体
<b>Alias:</b>	Glia maturation factor beta; GMF. GMF-beta; GMFB; GMFB HUMAN.
<b>Organism Species:</b>	Rabbit
<b>Clonality:</b>	Polyclonal
<b>React Species:</b>	Human,Mouse,Rat,Dog,Pig,Horse,Rabbit,
<b>Applications:</b>	WB=1:500-2000ELISA=1:500-1000IHC-P=1:400-800IHC-F=1:400-800ICC=1:100-500IF=1:100-500 (Paraffin sections need antigen repair) not yet tested in other applications. optimal dilutions/concentrations should be determined by the end user.
<b>Molecular weight:</b>	17kDa
<b>Cellular localization:</b>	cytoplasmic
<b>Form:</b>	Lyophilized or Liquid
<b>Concentration:</b>	1mg/ml
<b>immunogen:</b>	KLH conjugated synthetic peptide derived from human GMF beta:21-110/142
<b>Lsotype:</b>	IgG
<b>Purification:</b>	affinity purified by Protein A
<b>Storage Buffer:</b>	0.01M TBS(pH7.4) with 1% BSA, 0.03% Proclin300 and 50% Glycerol.
<b>Storage:</b>	Store at -20 °C for one year. Avoid repeated freeze/thaw cycles. The lyophilized antibody is stable at room temperature for at least one month and for greater than a year when kept at -20°C. When reconstituted in sterile pH 7.4 0.01M PBS or diluent of antibody the antibody is stable for at least two weeks at 2-4 °C.
<b>PubMed:</b>	<a href="#">PubMed</a>
<b>Product Detail:</b>	Glia maturation factor $\beta$ (GMF- $\beta$ ) belongs to the GMF subfamily of the larger actin-binding protein ADF family. This protein, which is phosphorylated following phorbol ester stimulation, is important for the nervous system. It causes brain cell differentiation, stimulates neural regeneration and inhibits tumor cell proliferation. Overexpression of GMF in astrocytes has been shown to enhance brain-derived neurotrophic factor (BDNF) production. GMF expression is increased by exercise, and the protein is crucial for exercise-induction of BDNF. Through BDNF production, GMF appears to play a role in

neuroprotection. In thymoma, T-cell development is maintained by GMF- $\beta$  being produced by the tumor cells.

**Function:**

This protein causes differentiation of brain cells, stimulation of neural regeneration, and inhibition of proliferation of tumor cells.

**Post-translational modifications:**

Phosphorylated; stimulated by phorbol ester.

**Similarity:**

Belongs to the actin-binding proteins ADF family. GMF subfamily. Contains 1 ADF-H domain.

**SWISS:**

P60983

**Gene ID:**

2764

**Database links:**

[Entrez Gene: 2764](#)Human

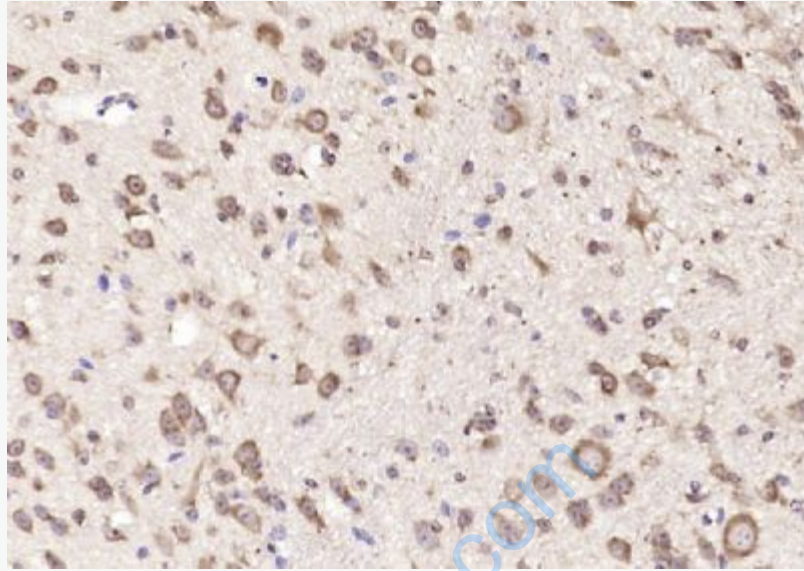
[Omin: 601713](#)Human

[SwissProt: P60983](#)Human

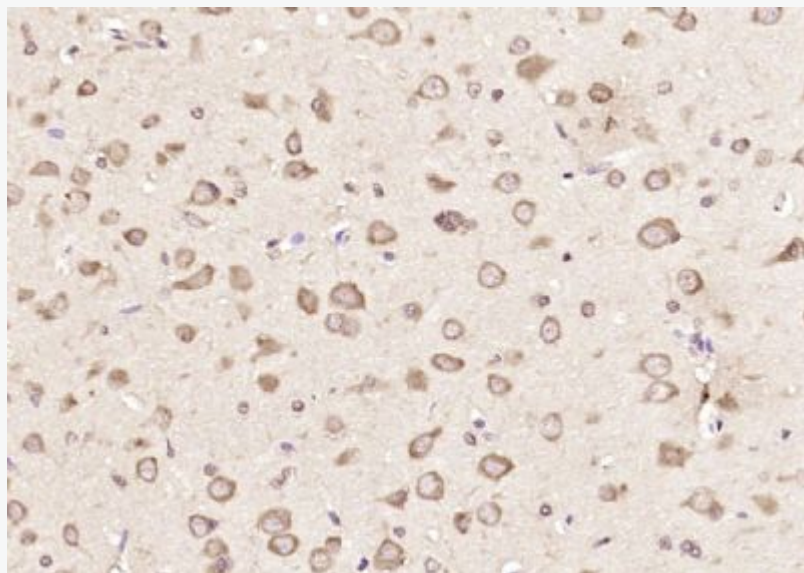
[Unigene: 151413](#)Human

**Important Note:**

This product as supplied is intended for research use only, not for use in human, therapeutic or diagnostic applications.



Paraformaldehyde-fixed, paraffin embedded (mouse cerebellum); Antigen retrieval by boiling in sodium citrate buffer (pH6.0) for 15min; Block endogenous peroxidase by 3% hydrogen peroxide for 20 minutes; Blocking buffer (normal goat serum) at 37°C for 30min; Antibody incubation with (GMF beta) Polyclonal Antibody, Unconjugated (SL11845R) at 1:200 overnight at 4°C, followed by operating according to SP Kit(Rabbit) (sp-0023) instructions and DAB staining.



**Picture:**

Paraformaldehyde-fixed, paraffin embedded (rat brain); Antigen retrieval by boiling in sodium citrate buffer (pH6.0) for 15min; Block endogenous peroxidase by 3% hydrogen peroxide for 20 minutes; Blocking buffer (normal goat serum) at 37°C for 30min; Antibody incubation with (GMF beta) Polyclonal Antibody, Unconjugated (SL11845R) at 1:200 overnight at 4°C, followed by operating according to SP Kit(Rabbit) (sp-0023) instructions and DAB staining.

[www.sunlongbiotech.com](http://www.sunlongbiotech.com)