



Rabbit Anti-GPM6B antibody

SL11847R

Product Name:	GPM6B
Chinese Name:	神经The cell membraneglycoproteinM6b
Alias:	M6b; Neuronal membrane glycoprotein M6b; rhombex 29; GPM6B_HUMAN.
Organism Species:	Rabbit
Clonality:	Polyclonal
React Species:	Human,Mouse,Rat,Pig,Horse,
Applications:	WB=1:500-2000ELISA=1:500-1000IHC-P=1:400-800IHC-F=1:400-800Flow-Cyt=1µg/TestICC=1:100-500IF=1:100-500 (Paraffin sections need antigen repair) not yet tested in other applications. optimal dilutions/concentrations should be determined by the end user.
Molecular weight:	29kDa
Cellular localization:	The cell membrane
Form:	Lyophilized or Liquid
Concentration:	1mg/ml
immunogen:	KLH conjugated synthetic peptide derived from human GPM6B:1-100/265
Lsotype:	IgG
Purification:	affinity purified by Protein A
Storage Buffer:	0.01M TBS(pH7.4) with 1% BSA, 0.03% Proclin300 and 50% Glycerol.
Storage:	Store at -20 °C for one year. Avoid repeated freeze/thaw cycles. The lyophilized antibody is stable at room temperature for at least one month and for greater than a year when kept at -20°C. When reconstituted in sterile pH 7.4 0.01M PBS or diluent of antibody the antibody is stable for at least two weeks at 2-4 °C.
PubMed:	PubMed
Product Detail:	GPM6B belongs to the myelin proteolipid protein family and is implicated in neural development. It is expressed in neurons and glia; cerebellar Bergmann glia, in glia within white matter tracts of the cerebellum and cerebrum, and in embryonic dorsal root ganglia. Function: May be involved in neural development. Involved in regulation of osteoblast function

and bone formation. Involved in matrix vesicle release by osteoblasts; this function seems to involve maintenance of the actin cytoskeleton. May be involved in cellular trafficking of SERT and thereby in regulation of serotonin uptake.

Subunit:

Interacts with SERT.

Subcellular Location:

Cell membrane; Multi-pass membrane protein (By similarity). Note=Colocalizes with SERT at the plasma membrane

Tissue Specificity:

Neurons and glia; cerebellar Bergmann glia, in glia within white matter tracts of the cerebellum and cerebrum, and in embryonic dorsal root ganglia.

Similarity:

Belongs to the myelin proteolipid protein family.

SWISS:

Q13491

Gene ID:

2824

Database links:

[Entrez Gene: 2824](#)Human

[Entrez Gene: 14758](#)Mouse

[Entrez Gene: 192179](#)Rat

[Omim: 300051](#)Human

[SwissProt: Q13491](#)Human

[SwissProt: P35803](#)Mouse

[SwissProt: Q9JJK1](#)Rat

[Unigene: 495710](#)Human

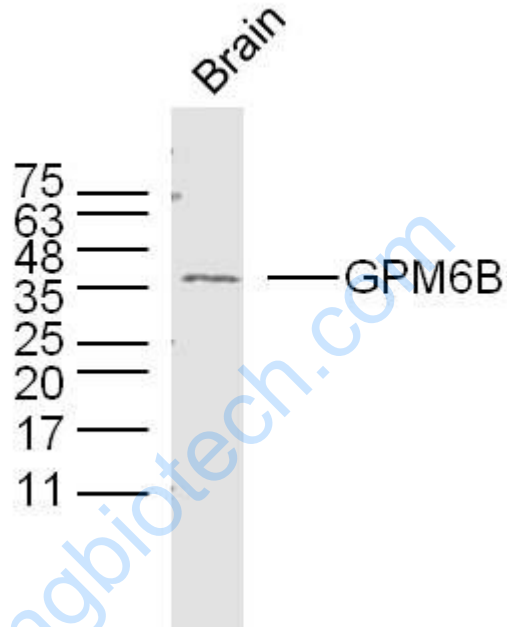
[Unigene: 222320](#)Mouse

[Unigene: 153513](#)Rat

Important Note:

This product as supplied is intended for research use only, not for use in human, therapeutic or diagnostic applications.

Picture:



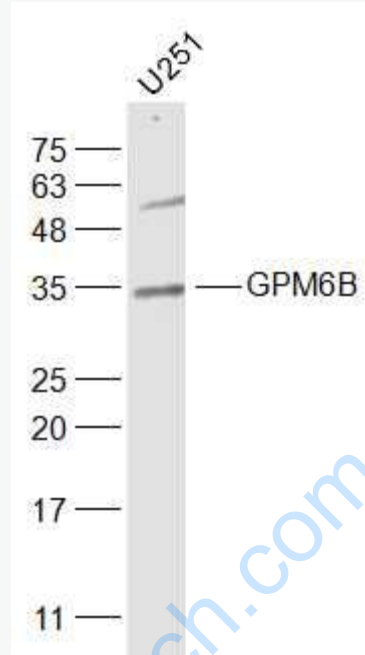
Sample: Brain (Mouse) Lysate at 40 ug

Primary: Anti-GPM6B (SL11847R) at 1/300 dilution

Secondary: IRDye800CW Goat Anti-Rabbit IgG at 1/20000 dilution

Predicted band size: 29 kD

Observed band size: 36 kD



Sample:

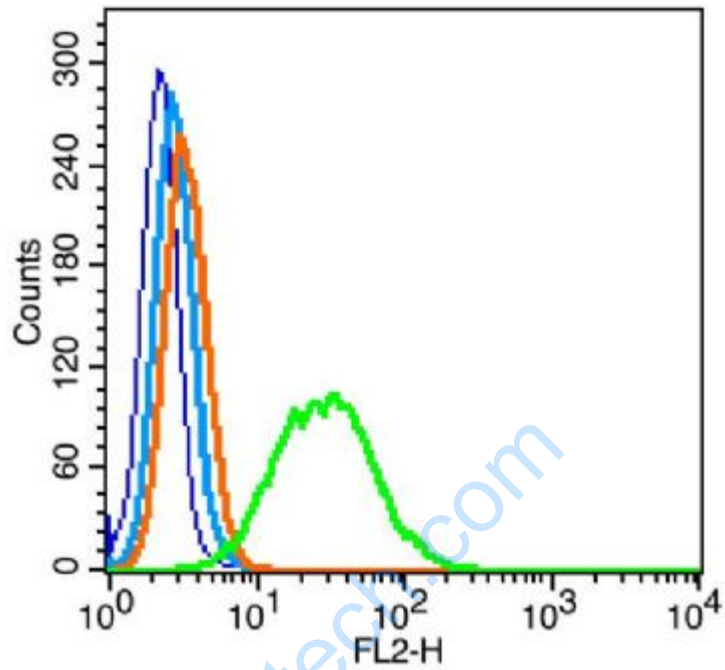
U251(Human) Cell Lysate at 30 ug

Primary: Anti-GPM6B? (SL11847R) at 1/1000 dilution

Secondary: IRDye800CW Goat Anti-Rabbit IgG at 1/20000 dilution

Predicted band size: 29 kD

Observed band size: 34 kD



Blank control: RSC96(blue), the cells were fixed with 2% paraformaldehyde (10 min) and then permeabilized with ice-cold 90% methanol for 30 min on ice.

Isotype Control Antibody: Rabbit IgG(orange) ; Secondary Antibody: Goat anti-rabbit IgG-PE(white blue), Dilution: 1:200 in 1 X PBS containing 0.5% BSA ;

Primary Antibody Dilution: 0.2 μ g in 100 μ L1X PBS containing 0.5% BSA(green).