



Rabbit Anti-TRAF3 antibody

SL1185R

Product Name:	TRAF3
Chinese Name:	Tumour坏死因子受体相关蛋白3抗体
Alias:	CAP 1; CAP1; CD40 associated protein 1; CD40 binding protein; CD40 bp; CD40 receptor associated factor 1; CD40bp; CRAF 1; CRAF1; LAP 1; LAP1; LMP1; Trafamn; LMP1 associated protein; MIPT3; TNF receptor associated factor 3; TRAF 3; TRAF3 HUMAN.
Organism Species:	Rabbit
Clonality:	Polyclonal
React Species:	Human,Mouse,Rat,
Applications:	WB=1:500-2000ELISA=1:500-1000IHC-P=1:400-800IHC-F=1:400-800Flow-Cyt=1µg/TestIF=1:100-500 (Paraffin sections need antigen repair) not yet tested in other applications. optimal dilutions/concentrations should be determined by the end user.
Molecular weight:	62kDa
Cellular localization:	cytoplasmic
Form:	Lyophilized or Liquid
Concentration:	1mg/ml
immunogen:	KLH conjugated synthetic peptide derived from human TRAF3:101-200/568
Lsotype:	IgG
Purification:	affinity purified by Protein A
Storage Buffer:	0.01M TBS(pH7.4) with 1% BSA, 0.03% Proclin300 and 50% Glycerol.
Storage:	Store at -20 °C for one year. Avoid repeated freeze/thaw cycles. The lyophilized antibody is stable at room temperature for at least one month and for greater than a year when kept at -20°C. When reconstituted in sterile pH 7.4 0.01M PBS or diluent of antibody the antibody is stable for at least two weeks at 2-4 °C.
PubMed:	PubMed
Product Detail:	The protein encoded by this gene is a member of the TNF receptor associated factor (TRAF) protein family. TRAF proteins associate with, and mediate the signal transduction from, members of the TNF receptor (TNFR) superfamily. This protein participates in the signal transduction of CD40, a TNFR family member important for

the activation of the immune response. This protein is found to be a critical component of the lymphotoxin-beta receptor (LTbetaR) signaling complex, which induces NF-kappaB activation and cell death initiated by LTbeta ligation. Epstein-Barr virus encoded latent infection membrane protein-1 (LMP1) can interact with this and several other members of the TRAF family, which may be essential for the oncogenic effects of LMP1. Three alternatively spliced transcript variants encoding two distinct isoforms have been reported. [provided by RefSeq].

Function:

Adapter protein and signal transducer that links members of the tumor necrosis factor receptor family to different signaling pathways by association with the receptor cytoplasmic domain and kinases. Seems to be involved in activation of NF-kappa-B and JNK and in apoptosis. Is regulated by TANK/ITRAF which competes with TNFRSF5/CD40 for binding. Seems to play a role T-cell dependent immune responses (By similarity).

Subunit:

"Homotrimer (Probable). Heteromer with TRAF5. Binds to TNFRSF5/CD40. Associates with LTBR/TNFRSF3, TNFRSF4, TNFRSF8/CD30, TNFRSF17/BCMA and EDAR, MAP3K5, MAP3K14, and TRAF-interacting protein TRIP and TRAF and TNF receptor associated protein TTRAP. Binds to TANK/ITRAF and TRAF3IP1. Interacts with TICAM1. Interacts with OTUD5.

Tissue Specificity:

In adult, highest in brain. Also found in kidney, heart, thymus, spleen, lung, muscle, testis and ovary. Not found in liver.

Similarity:

Contains 1 MATH domain.
Contains 1 RING-type zinc finger.
Contains 2 TRAF-type zinc fingers.

SWISS:

Q13114

Gene ID:

7187

Database links:

[Entrez Gene: 7187](#) Human

[Entrez Gene: 22031](#) Mouse

[Entrez Gene: 362788](#) Rat

[Omin: 601896](#) Human

[SwissProt: Q13114](#) Human

[SwissProt: Q60803](#) Mouse

[Unigene: 510528](#) Human

[Unigene: 27431](#) Mouse

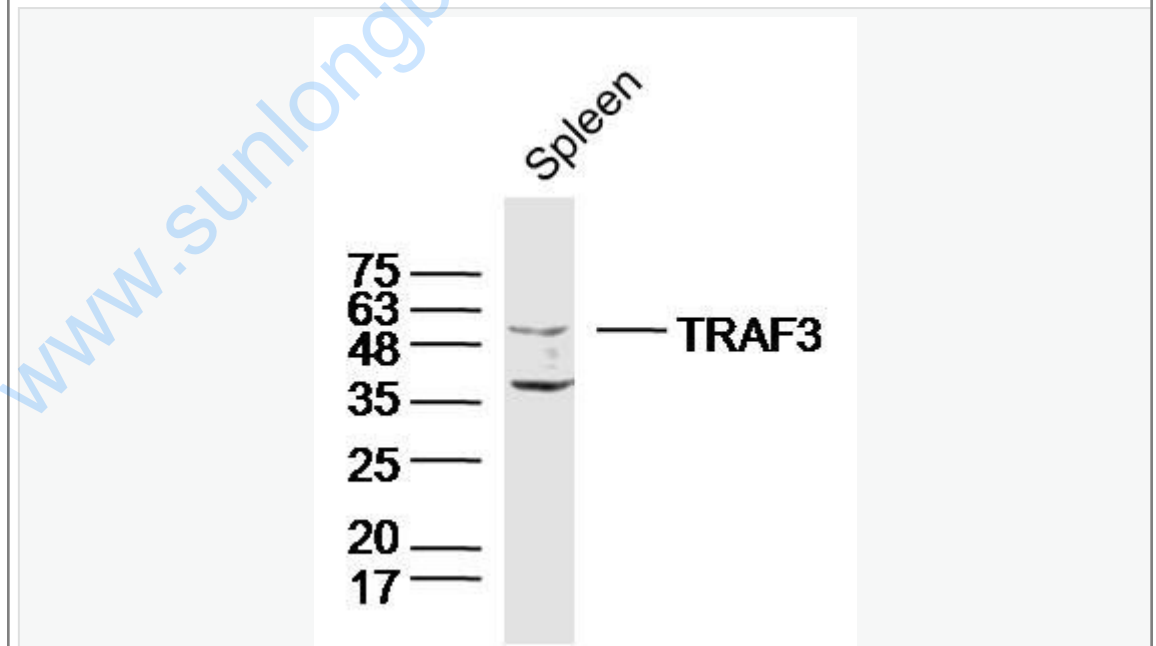
[Unigene: 12033](#) Rat

Important Note:

This product as supplied is intended for research use only, not for use in human, therapeutic or diagnostic applications.

TRAF3是作用最为广泛的一种TRAF蛋白, 它可以与LTbR、CD40、TNFR2和LMP1结合, 并介导CD30、LMP1活化NF- κ B。TRAF3与CD40结合后可以挽救凋亡的B细胞, TRAF3还参与CD40在B细胞中上调CD23的作用。

Picture:



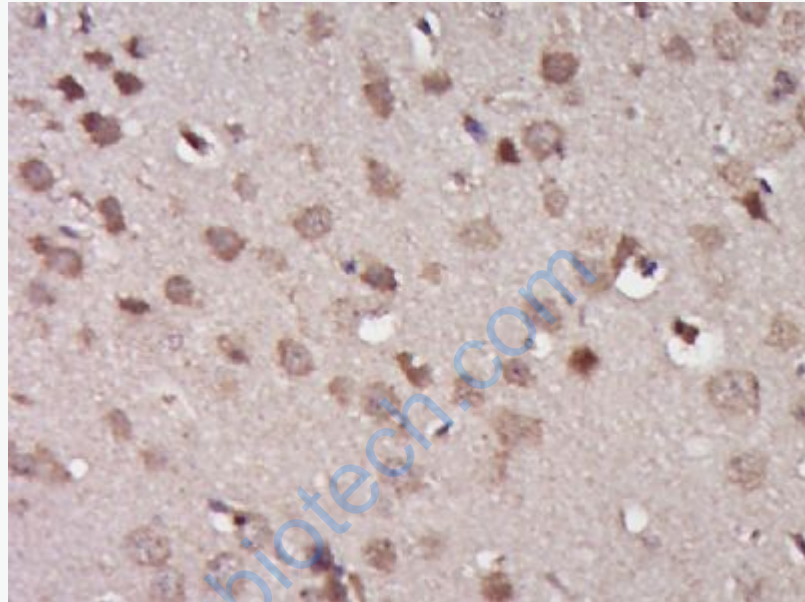
Sample: Spleen(Mouse)Lysate at 40 ug

Primary: Anti-TRAF3(SL1185R) at 1/300 dilution

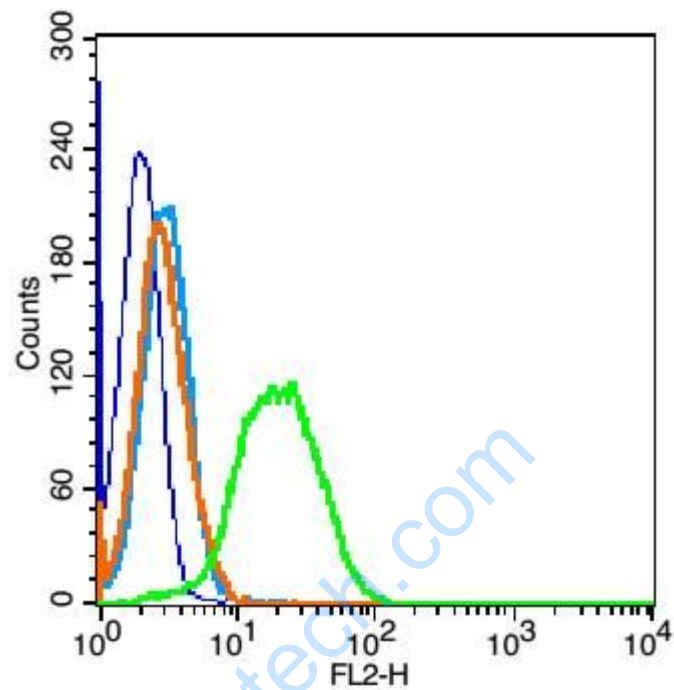
Secondary: IRDye800CW Goat Anti-Rabbit IgG at 1/20000 dilution

Predicted band size: 62 kD

Observed band size: 62 kD



Paraformaldehyde-fixed, paraffin embedded (Mouse brain); Antigen retrieval by boiling in sodium citrate buffer (pH6.0) for 15min; Block endogenous peroxidase by 3% hydrogen peroxide for 20 minutes; Blocking buffer (normal goat serum) at 37°C for 30min; Antibody incubation with (TRAF3) Polyclonal Antibody, Unconjugated (SL1185R) at 1:400 overnight at 4°C, followed by operating according to SP Kit(Rabbit) (sp-0023) instructions and DAB staining.



Blank control: Jurkat cells (blue).

Primary Antibody: Rabbit Anti-TRAF3 antibody (SL1185R), Dilution: 1 μ g in 100 μ L
1X PBS containing 0.5% BSA;

Isotype Control Antibody: Rabbit IgG (orange), used under the same conditions);

Secondary Antibody: Goat anti-rabbit IgG-PE (white blue), Dilution: 1:200 in 1 X
PBS containing 0.5% BSA.

Protocol

The cells were fixed with 2% paraformaldehyde (10 min), then permeabilized with 90% ice-cold methanol for 30 min on ice. Primary antibody (SL1185R) were incubated for 30 min on the ice, followed by 1 X PBS containing 0.5% BSA + 1 0% goat serum (15 min) to block non-specific protein-protein interactions. Then the Goat Anti-rabbit IgG/PE antibody was added into the blocking buffer mentioned

above to react with the primary antibody at 1/200 dilution for 30 min on ice.

Acquisition of 20,000 events was performed.

www.sunlongbiotech.com