



Rabbit Anti-ASH1L antibody

SL11866R

Product Name:	ASH1L
Chinese Name:	KMT2H蛋白抗体
Alias:	KMT2H / ASH1; KMT2H; ASH1; Absent small and homeotic disks protein 1 homolog; Absent Small or Homeotic Like; ASH 1 ; ASH 1L; ash1 (absent small or homeotic 1); Ash1 (absent small or homeotic) like ; ASH1-like protein; ASH1L; ASH1L_HUMAN; ASH1L1; FLJ10504; huASH1; KIAA1420; Lysine N-methyltransferase 2H; Probable histone-lysine N-methyltransferase ASH1L.
Organism Species:	Rabbit
Clonality:	Polyclonal
React Species:	Human,Mouse,Rat,Chicken,Dog,Pig,Cow,Horse,Rabbit,Sheep,
Applications:	ELISA=1:500-1000IHC-P=1:400-800IHC-F=1:400-800ICC=1:100-500IF=1:100-500 (Paraffin sections need antigen repair) not yet tested in other applications. optimal dilutions/concentrations should be determined by the end user.
Molecular weight:	333kDa
Cellular localization:	The nucleus
Form:	Lyophilized or Liquid
Concentration:	1mg/ml
immunogen:	KLH conjugated synthetic peptide derived from human KMT2H/ASH1L:1985-2060/2969
Lsotype:	IgG
Purification:	affinity purified by Protein A
Storage Buffer:	0.01M TBS(pH7.4) with 1% BSA, 0.03% Proclin300 and 50% Glycerol.
Storage:	Store at -20 °C for one year. Avoid repeated freeze/thaw cycles. The lyophilized antibody is stable at room temperature for at least one month and for greater than a year when kept at -20°C. When reconstituted in sterile pH 7.4 0.01M PBS or diluent of antibody the antibody is stable for at least two weeks at 2-4 °C.
PubMed:	PubMed
Product Detail:	This gene encodes a member of the trithorax group of transcriptional activators. The protein contains four AT hooks, a SET domain, a PHD-finger motif, and a

bromodomain. It is localized to many small speckles in the nucleus, and also to cell-cell tight junctions. [provided by RefSeq, Jul 2008]

Function:

Histone methyltransferase. Probably methylates 'Lys-4' of histone H3, a specific tag for epigenetic transcriptional activation.

Subcellular Location:

Nucleus.

Tissue Specificity:

Widely expressed, with highest level in brain, heart and kidney.

Similarity:

Belongs to the histone-lysine methyltransferase family. SET2 subfamily.

Contains 3 A.T hook DNA-binding domains.

Contains 1 AWS domain.

Contains 1 BAH domain.

Contains 1 bromo domain.

Contains 1 PHD-type zinc finger.

Contains 1 post-SET domain.

Contains 1 SET domain.

SWISS:

Q9NR48

Gene ID:

55870

Database links:

[Entrez Gene: 55870](#) Human

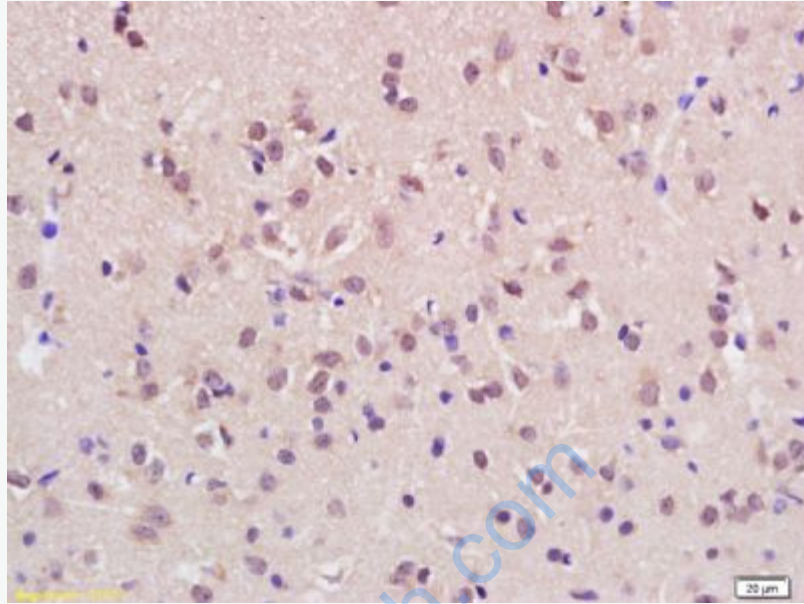
[Omim: 607999](#) Human

[SwissProt: Q9NR48](#) Human

[Unigene: 491060](#) Human

Important Note:

This product as supplied is intended for research use only, not for use in human, therapeutic or diagnostic applications.



Picture:

Tissue/cell: rat brain tissue; 4% Paraformaldehyde-fixed and paraffin-embedded;
Antigen retrieval: citrate buffer (0.01M, pH 6.0), Boiling bathing for 15min; Block endogenous peroxidase by 3% Hydrogen peroxide for 30min; Blocking buffer (normal goat serum,C-0005) at 37°C for 20 min;
Incubation: Anti-KMT2H/ASH1L Polyclonal Antibody, Unconjugated(SL11866R) 1:200, overnight at 4°C, followed by conjugation to the secondary antibody(SP-0023) and DAB(C-0010) staining