



Rabbit Anti-LGI3 antibody

SL11879R

Product Name:	LGI3
Chinese Name:	Lgi3蛋白抗体
Alias:	Leucine rich repeat LGI family member 3; Leucine-rich glioma inactivated protein 3; Leucine-rich glioma-inactivated protein 3; Leucine-rich repeat LGI family member 3; LGI1 like protein 4; LGI1-like protein 4; LGI3; LGI3_HUMAN; LGIL4.
Organism Species:	Rabbit
Clonality:	Polyclonal
React Species:	Human,Mouse,Rat,Dog,Pig,Horse,Sheep,
Applications:	WB=1:500-2000ELISA=1:500-1000IHC-P=1:400-800IHC-F=1:400-800ICC=1:100-500IF=1:100-500 (Paraffin sections need antigen repair) not yet tested in other applications. optimal dilutions/concentrations should be determined by the end user.
Molecular weight:	59kDa
Cellular localization:	cytoplasmicThe cell membraneSecretory protein
Form:	Lyophilized or Liquid
Concentration:	1mg/ml
immunogen:	KLH conjugated synthetic peptide derived from human LGI3:101-220/548
Lsotype:	IgG
Purification:	affinity purified by Protein A
Storage Buffer:	0.01M TBS(pH7.4) with 1% BSA, 0.03% Proclin300 and 50% Glycerol.
Storage:	Store at -20 °C for one year. Avoid repeated freeze/thaw cycles. The lyophilized antibody is stable at room temperature for at least one month and for greater than a year when kept at -20°C. When reconstituted in sterile pH 7.4 0.01M PBS or diluent of antibody the antibody is stable for at least two weeks at 2-4 °C.
PubMed:	PubMed
Product Detail:	The leucine-rich (LRR) repeat is a 20-30 amino acid motif that forms a hydrophobic ?/ horseshoe fold, allowing it to accommodate several leucine residues within a tightly packed core. All LRR repeats contain a variable segment and a highly conserved segment, the latter of which accounts for 11 or 12 residues of the entire LRR motif. Leucine-rich glioma-inactivated protein 3 (LGI3), also known as LGI1-like protein 4

(LGI4) or leucine-rich repeat LGI family member 3, is a 548 amino acid secretory protein. LGI3 contains five LRR repeats and seven EAR repeats. Widely expressed, with highest levels in brain and lung, LGI3 has been shown to colocalize with endocytosis-associated proteins, lipid raft markers, and Syntaxin. The gene encoding LGI3 maps to chromosome 8p21.3.

Function:

May participate in the regulation of neuronal exocytosis.

Subunit:

Interacts with STX1A

Subcellular Location:

Secreted (Potential). Cytoplasmic vesicle, secretory vesicle, synaptic vesicle (By similarity). Cell junction, synapse, synaptosome (By similarity). Note=Found in the synaptosomal membrane fraction

Tissue Specificity:

Widely expressed, with highest levels in brain and lung.

Similarity:

Contains 7 EAR repeats.
Contains 3 LRR (leucine-rich) repeats.
Contains 1 LRRCT domain.
Contains 1 LRRNT domain.

SWISS:

Q8N145

Gene ID:

203190

Database links:

[Entrez Gene: 203190](#)Human

[Entrez Gene: 213469](#)Mouse

[Entrez Gene: 306013](#)Rat

[Omim: 608302](#)Human

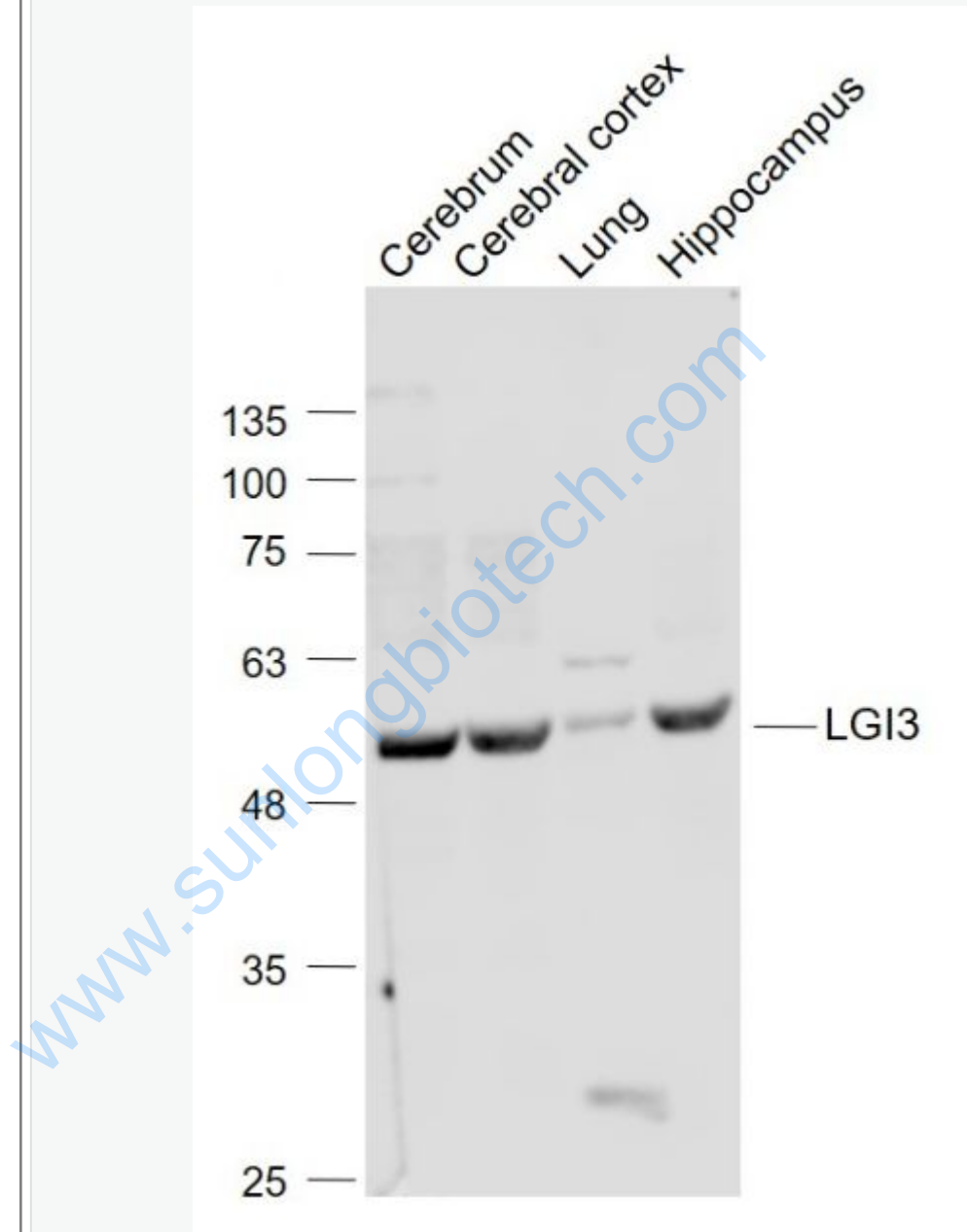
[SwissProt: Q8N145](#)Human

[SwissProt: Q8K406](#)Mouse

Important Note:

This product as supplied is intended for research use only, not for use in human, therapeutic or diagnostic applications.

Picture:



Sample:

Cerebrum (Mouse) Lysate at 40 ug

Cerebral cortex (Mouse) Lysate at 40 ug

Lung (Mouse) Lysate at 40 ug

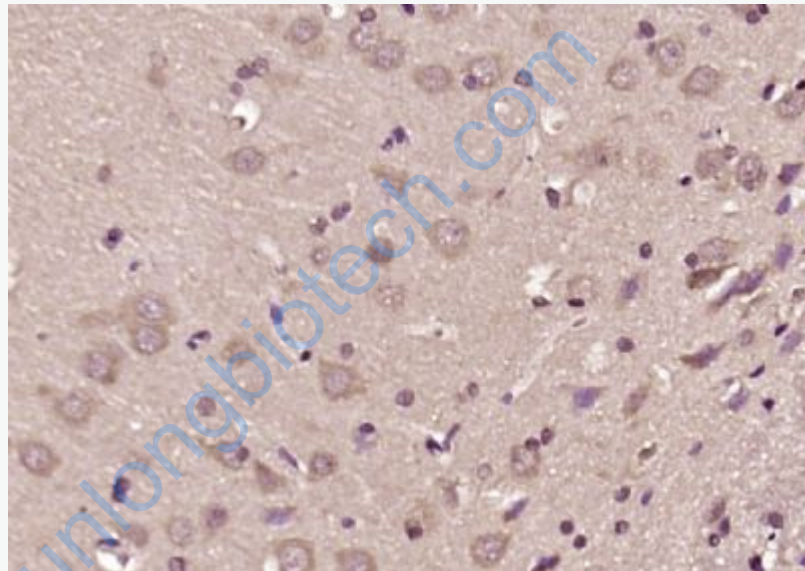
Hippocampus (Mouse) Lysate at 40 ug

Primary: Anti- LGI3 (SL11879R) at 1/1000 dilution

Secondary: IRDye800CW Goat Anti-Rabbit IgG at 1/20000 dilution

Predicted band size: 59 kD

Observed band size: 59 kD



Paraformaldehyde-fixed, paraffin embedded (rat brain); Antigen retrieval by boiling in sodium citrate buffer (pH6.0) for 15min; Block endogenous peroxidase by 3% hydrogen peroxide for 20 minutes; Blocking buffer (normal goat serum) at 37°C for 30min; Antibody incubation with (LGI3) Polyclonal Antibody, Unconjugated (SL11879R) at 1:200 overnight at 4°C, followed by operating according to SP Kit(Rabbit) (sp-0023) instructions and DAB staining.