



## Rabbit Anti-NAV2 antibody

SL11892R

<b>Product Name:</b>	NAV2
<b>Chinese Name:</b>	维甲酸诱导神经母细胞瘤蛋白1抗体
<b>Alias:</b>	HELAD1; Helicase, APC down regulated 1; KIAA1419; mCG 145366; mKIAA3015; NAV 2; Neuron navigator 2; POMFIL2; Pore membrane and/or filament interacting like protein 2; RAINB1; RAINB2; Retinoic acid inducible in neuroblastoma 1; Steerin 2; STEERIN2; Unc 53 homolog 2; Unc53H2; NAV2_HUMAN.
<b>Organism Species:</b>	Rabbit
<b>Clonality:</b>	Polyclonal
<b>React Species:</b>	Human,Mouse,Dog,Cow,Horse,Rabbit,
<b>Applications:</b>	WB=1:500-2000ELISA=1:500-1000 not yet tested in other applications. optimal dilutions/concentrations should be determined by the end user.
<b>Molecular weight:</b>	268kDa
<b>Cellular localization:</b>	The nucleus
<b>Form:</b>	Lyophilized or Liquid
<b>Concentration:</b>	1mg/ml
<b>immunogen:</b>	KLH conjugated synthetic peptide derived from human NAV2/RAINB1:21-120/2488
<b>Lsotype:</b>	IgG
<b>Purification:</b>	affinity purified by Protein A
<b>Storage Buffer:</b>	0.01M TBS(pH7.4) with 1% BSA, 0.03% Proclin300 and 50% Glycerol.
<b>Storage:</b>	Store at -20 °C for one year. Avoid repeated freeze/thaw cycles. The lyophilized antibody is stable at room temperature for at least one month and for greater than a year when kept at -20°C. When reconstituted in sterile pH 7.4 0.01M PBS or diluent of antibody the antibody is stable for at least two weeks at 2-4 °C.
<b>PubMed:</b>	<a href="#">PubMed</a>
<b>Product Detail:</b>	This gene encodes a member of the neuron navigator gene family, which may play a role in cellular growth and migration. Multiple transcript variants encoding different isoforms have been found for this gene. [provided by RefSeq, Oct 2011]  <b>Function:</b>

NAV2 protein shows high similarity to *Caenorhabditis elegans*, unc-53, that is required for axonal elongation of mechanosensory neurons, suggesting that these proteins are orthologs. Thus, NAV2 may be involved in the vitamin A metabolite, atRA (all-trans retinoic acid)-mediated neurite outgrowth. NAV2 possesses 3' to 5' helicase activity and exonuclease activity and is involved in the development of different sensory organs.

**Subcellular Location:**

Nuclear.

**Tissue Specificity:**

Highly expressed in the brain, kidney and liver. Also expressed in the thyroid, mammary gland, spinal cord, heart, placenta and lung. Abundantly expressed in colon cancers.

**Similarity:**

Belongs to the Nav/unc-53 family.  
Contains 1 CH (calponin-homology) domain.

**SWISS:**

Q8IVL1

**Gene ID:**

89797

**Database links:**

[Entrez Gene: 89797](#) Human

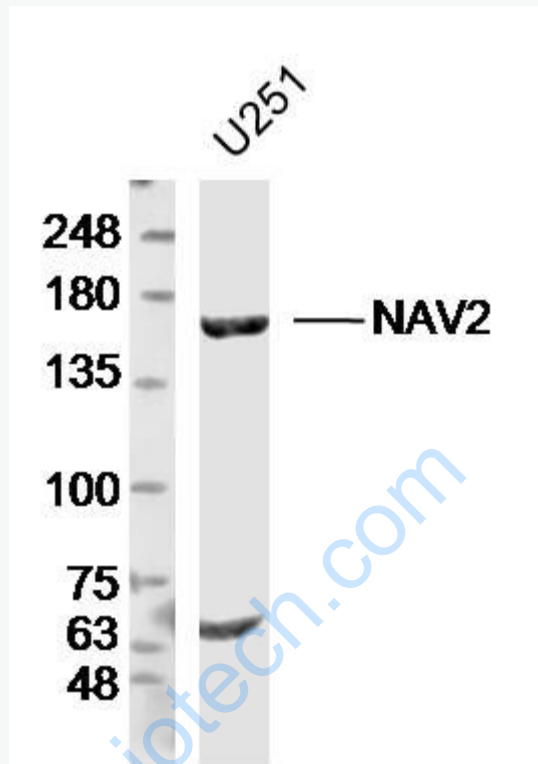
[Omim: 607026](#) Human

[SwissProt: Q8IVL1](#) Human

**Important Note:**

This product as supplied is intended for research use only, not for use in human, therapeutic or diagnostic applications.

Picture:



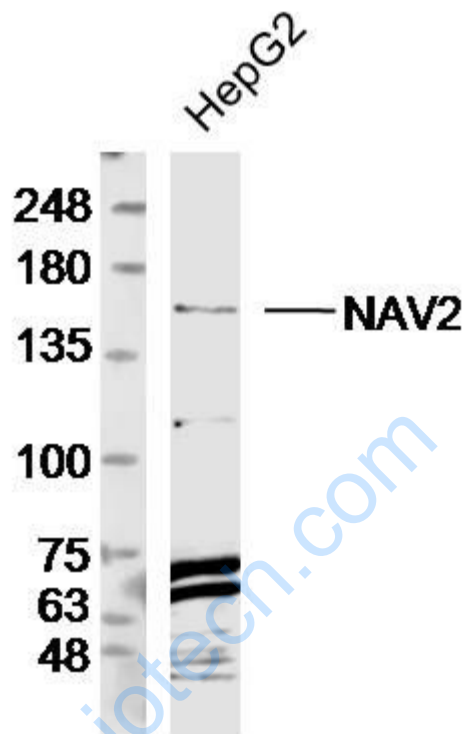
Sample: U251 Cell (Human) Lysate at 30 ug

Primary: Anti- NAV2 (SL11892R) at 1/300 dilution

Secondary: IRDye800CW Goat Anti-Rabbit IgG at 1/20000 dilution

Predicted band size: 268kD

Observed band size: 160kD



Sample: HepG2 Cell (Human) Lysate at 30 ug

Primary: Anti- NAV2 (SL11892R) at 1/300 dilution

Secondary: IRDye800CW Goat Anti-Rabbit IgG at 1/20000 dilution

Predicted band size: 268kD

Observed band size: 160kD