



Rabbit Anti-SHISA9 antibody

SL11950R

Product Name:	SHISA9
Chinese Name:	SHISA蛋白家族9抗体
Alias:	2700045P11Rik; CKAMP44; Cystine knot AMPAR modulating protein; DKFZp686D24206; DKFZp686E24206; FLJ10015; FLJ37653; FLJ58277; FLJ99079; FLJ99234; Protein shisa-9; Shisa homolog 9 (Xenopus laevis); Shisa homolog 9; shisa9; SHSA9 HUMAN.
Organism Species:	Rabbit
Clonality:	Polyclonal
React Species:	Human,Mouse,Rat,Dog,Cow,Horse,Rabbit,Sheep,
Applications:	WB=1:500-2000ELISA=1:500-1000IHC-P=1:400-800IHC-F=1:400-800ICC=1:100-500IF=1:100-500 (Paraffin sections need antigen repair) not yet tested in other applications. optimal dilutions/concentrations should be determined by the end user.
Molecular weight:	44kDa
Cellular localization:	The cell membrane
Form:	Lyophilized or Liquid
Concentration:	1mg/ml
immunogen:	KLH conjugated synthetic peptide derived from human SHISA9:251-350/424
Lsotype:	IgG
Purification:	affinity purified by Protein A
Storage Buffer:	0.01M TBS(pH7.4) with 1% BSA, 0.03% Proclin300 and 50% Glycerol.
Storage:	Store at -20 °C for one year. Avoid repeated freeze/thaw cycles. The lyophilized antibody is stable at room temperature for at least one month and for greater than a year when kept at -20°C. When reconstituted in sterile pH 7.4 0.01M PBS or diluent of antibody the antibody is stable for at least two weeks at 2-4 °C.
PubMed:	PubMed
Product Detail:	Regulator of short-term neuronal synaptic plasticity in the dentate gyrus. Associates with AMPA receptors (ionotropic glutamate receptors) in synaptic spines and promotes AMPA receptor desensitization at excitatory synapses.

Function:

Regulator of short-term neuronal synaptic plasticity in the dentate gyrus. Associates with AMPA receptors (ionotropic glutamate receptors) in synaptic spines and promotes AMPA receptor desensitization at excitatory synapses

Subunit:

Component of some AMPA receptors (ionotropic glutamate receptors) complex, at least composed of some AMPA receptor (GRIA1, GRIA2 and/or GRIA3), CACNG2 and SHISA9, as well as low level of DLG4

Subcellular Location:

Cell projection > dendritic spine membrane. Cell junction > synapse.

Similarity:

Belongs to the shisa family. SHISA9 subfamily.

SWISS:

B4DS77

Gene ID:

729993

Database links:

[Entrez Gene: 729993](#)Human

[Entrez Gene: 72555](#)Mouse

[Entrez Gene: 100361134](#)Rat

[Omim: 613346](#)Human

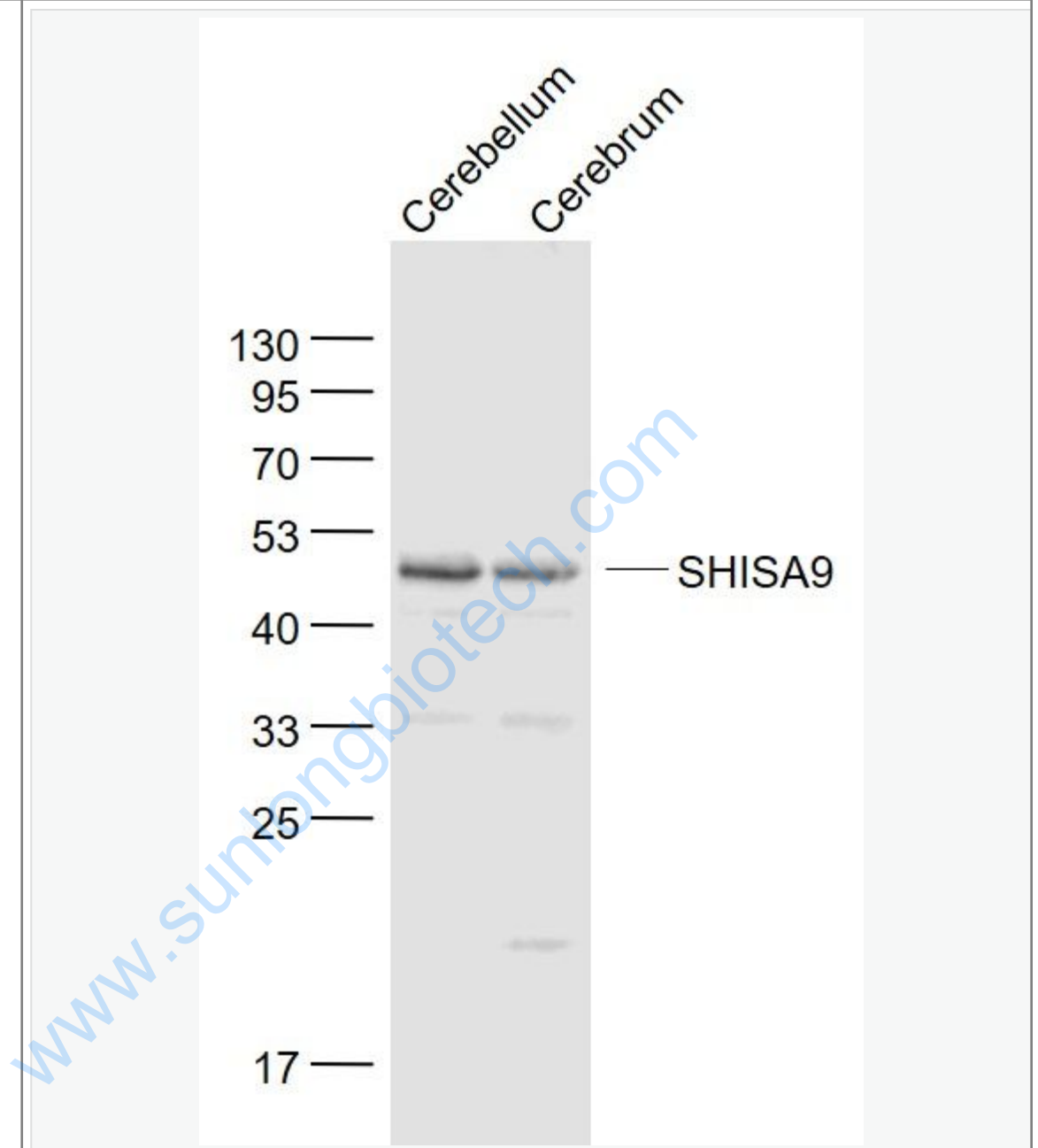
[SwissProt: B4DS77](#)Human

[SwissProt: Q9CZN4](#)Mouse

Important Note:

This product as supplied is intended for research use only, not for use in human, therapeutic or diagnostic applications.

Picture:



Sample:

Cerebellum (Mouse) Lysate at 40 ug

Cerebrum (Mouse) Lysate at 40 ug

Primary: Anti- SHISA9 (SL11950R) at 1/1000 dilution

Secondary: IRDye800CW Goat Anti-Rabbit IgG at 1/20000 dilution

	<p>Predicted band size: 44 kD</p>
	<p>Observed band size: 44 kD</p>

www.sunlongbiotech.com