



Rabbit Anti-Creatine kinase B type antibody

SL11989R

Product Name:	Creatine kinase B type
Chinese Name:	脑肌酸激酶BCK抗体
Alias:	B CK; B CK; B-CK; BB-CK; BCK; Brain creatine kinase; Ckb; CKBB; CK-BB; Creatine kinase B; Creatine kinase B chain; Creatine kinase B-type; Creatine Kinase BB Isoenzyme; Creatine Kinase BB Isoenzyme; Creatine Kinase BB Isoenzyme; Creatine kinase brain; Creatine phosphokinase BB; KCRB HUMAN.
Organism Species:	Rabbit
Clonality:	Polyclonal
React Species:	Human,Mouse,Rat,Chicken,Cow,Sheep,
Applications:	ELISA=1:500-1000IHC-P=1:400-800IHC-F=1:400-800Flow-Cyt=1 μ g/TestICC=1:100-500IF=1:100-500 (Paraffin sections need antigen repair) not yet tested in other applications. optimal dilutions/concentrations should be determined by the end user.
Molecular weight:	43kDa
Cellular localization:	cytoplasmic
Form:	Lyophilized or Liquid
Concentration:	1mg/ml
immunogen:	KLH conjugated synthetic peptide derived from human Creatine kinase B type:234-280/381
Lsotype:	IgG
Purification:	affinity purified by Protein A
Storage Buffer:	0.01M TBS(pH7.4) with 1% BSA, 0.03% Proclin300 and 50% Glycerol.
Storage:	Store at -20 °C for one year. Avoid repeated freeze/thaw cycles. The lyophilized antibody is stable at room temperature for at least one month and for greater than a year when kept at -20°C. When reconstituted in sterile pH 7.4 0.01M PBS or diluent of antibody the antibody is stable for at least two weeks at 2-4 °C.
PubMed:	PubMed
Product Detail:	The protein encoded by this gene is a cytoplasmic enzyme involved in energy homeostasis. The encoded protein reversibly catalyzes the transfer of phosphate between ATP and various phosphogens such as creatine phosphate. It acts as a homodimer in

brain as well as in other tissues, and as a heterodimer with a similar muscle isozyme in heart. The encoded protein is a member of the ATP:guanido phosphotransferase protein family. A pseudogene of this gene has been characterized. [provided by RefSeq, Jul 2008]

Function:

Reversibly catalyzes the transfer of phosphate between ATP and various phosphagens (e.g. creatine phosphate). Creatine kinase isoenzymes play a central role in energy transduction in tissues with large, fluctuating energy demands, such as skeletal muscle, heart, brain and spermatozoa.

Subunit:

Dimer of identical or non-identical chains. With MM being the major form in skeletal muscle and myocardium, MB existing in myocardium, and BB existing in many tissues, especially brain.

Subcellular Location:

Cytoplasm.

Similarity:

Belongs to the ATP:guanido phosphotransferase family.
Contains 1 phosphagen kinase C-terminal domain.
Contains 1 phosphagen kinase N-terminal domain.

SWISS:

P12277

Gene ID:

1152

Database links:

[Entrez Gene: 1152](#) Human

[Entrez Gene: 12709](#) Mouse

[Entrez Gene: 24264](#) Rat

[Omim: 123280](#) Human

[SwissProt: P12277](#) Human

[SwissProt: Q04447](#) Mouse

[SwissProt: P07335](#) Rat

[Unigene: 173724](#) Human

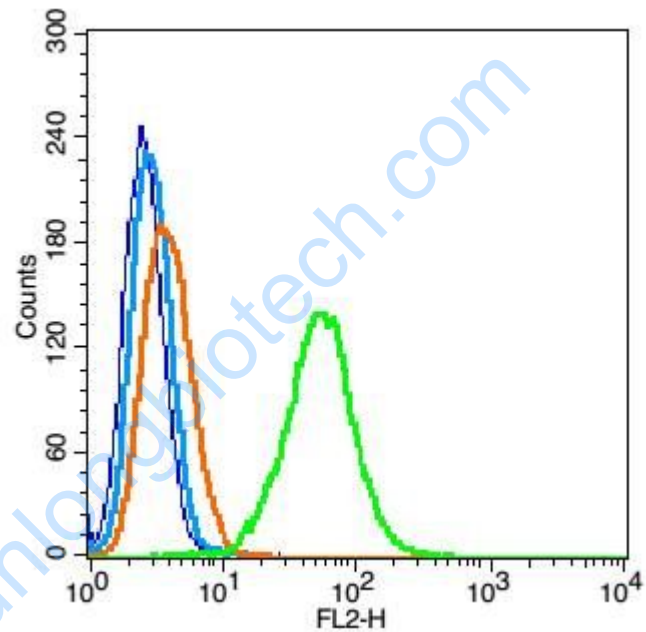
[Unigene: 16831](#) Mouse

[Unigene: 1472](#) Rat

Important Note:

This product as supplied is intended for research use only, not for use in human, therapeutic or diagnostic applications.

Picture:



Blank control: RSC96(blue), the cells were fixed with 2% paraformaldehyde (10 min) and then permeabilized with ice-cold 90% methanol for 30 min on ice..

Isotype Control Antibody: Rabbit IgG(orange) ; Secondary Antibody: Goat anti-rabbit IgG-FITC(white blue), Dilution: 1:100 in 1 X PBS containing 0.5% BSA ;

Primary Antibody Dilution: 1 μ g in 100 μ L 1X PBS containing 0.5% BSA(green).