



Rabbit Anti-PPP2R5D antibody

SL11992R

Product Name:	PPP2R5D
Chinese Name:	蛋白质磷酸酶2调节亚基5D/PP2A-B56-δ抗体
Alias:	B'delta; Delta isoform of regulatory subunit B56, protein phosphatase 2A; MGC2134; MGC8949; OTTHUMP00000039821; PP2A B subunit B' delta isoform; PP2A B subunit B56 delta isoform; PP2A B subunit PR61 delta isoform; PP2A B subunit R5 delta isoform; Protein phosphatase 2 regulatory subunit B (B56) delta isoform; Protein phosphatase 2 regulatory subunit B delta isoform; Serine threonine protein phosphatase 2A 56 kDa regulatory subunit delta isoform; TEG-271; Tex271; 2A5D HUMAN.
Organism Species:	Rabbit
Clonality:	Polyclonal
React Species:	Human,Mouse,Rat,
Applications:	WB=1:500-2000ELISA=1:500-1000IHC-P=1:400-800IHC-F=1:400-800ICC=1:100-500IF=1:100-500 (Paraffin sections need antigen repair) not yet tested in other applications. optimal dilutions/concentrations should be determined by the end user.
Molecular weight:	70kDa
Cellular localization:	cytoplasmic
Form:	Lyophilized or Liquid
Concentration:	1mg/ml
immunogen:	KLH conjugated synthetic peptide derived from human PPP2R5D:501-602/602
Lsotype:	IgG
Purification:	affinity purified by Protein A
Storage Buffer:	0.01M TBS(pH7.4) with 1% BSA, 0.03% Proclin300 and 50% Glycerol.
Storage:	Store at -20 °C for one year. Avoid repeated freeze/thaw cycles. The lyophilized antibody is stable at room temperature for at least one month and for greater than a year when kept at -20°C. When reconstituted in sterile pH 7.4 0.01M PBS or diluent of antibody the antibody is stable for at least two weeks at 2-4 °C.
PubMed:	PubMed
Product Detail:	In eukaryotes, the phosphorylation and dephosphorylation of proteins on serine and threonine residues is an essential means of regulating a broad range of cellular functions,

including division, homeostasis and apoptosis. A group of proteins that are intimately involved in this process are the protein phosphatases. In general, the protein phosphatase (PP) holoenzyme is a trimeric complex composed of a regulatory subunit, a variable subunit, and a catalytic subunit. Four major families of protein phosphatase catalytic subunits have been identified, designated PP1, PP2A, PP2B (calcineurin) and PP2C. An additional protein phosphatase catalytic subunit, PPX (also known as PP4) is a putative member of a novel PP family. The PP2A family comprises subfamily members PP2A Alpha and PP2A Beta. The PP2A catalytic subunit associates with a variety of regulatory subunits. Regulatory subunits include PP2A-A-Alpha and -A-Beta, PP2A-B-Alpha and -B-Beta, PP2A-C-Alpha and -C-Beta, PP2A-B56-Alpha, -B56-Beta, -B56-gamma and -B56-Delta.

Function:

PPP2R5D is one of the four major Ser/Thr phosphatases, and it is implicated in the negative control of cell growth and division. It consists of a common heteromeric core enzyme, which is composed of a catalytic subunit and a constant regulatory subunit, that associates with a variety of regulatory subunits.

Subunit:

PP2A consists of a common heterodimeric core enzyme, composed of a 36 kDa catalytic subunit (subunit C) and a 65 kDa constant regulatory subunit (PR65 or subunit A), that associates with a variety of regulatory subunits. Proteins that associate with the core dimer include three families of regulatory subunits B (the R2/B/PR55/B55, R3/B"/PR72/PR130/PR59 and R5/B'/B56 families), the 48 kDa variable regulatory subunit, viral proteins, and cell signaling molecules. Interacts with SGOL1.

Subcellular Location:

Cytoplasmic and nuclear in interphase, nuclear during mitosis

Tissue Specificity:

Isoform Delta-2 is widely expressed. Isoform Delta-1 is highly expressed in brain.

Post-translational modifications:

Phosphorylated upon DNA damage, probably by ATM or ATR.

Similarity:

Belongs to the phosphatase 2A regulatory subunit B56 family.

SWISS:

Q14738

Gene ID:

5528

Database links:

[Entrez Gene: 5528](#)Human

[Entrez Gene: 21770](#)Mouse

[Entrez Gene: 363193](#)Rat

[Omim: 601646](#)Human

[SwissProt: Q14738](#)Human

[Unigene: 533308](#)Human

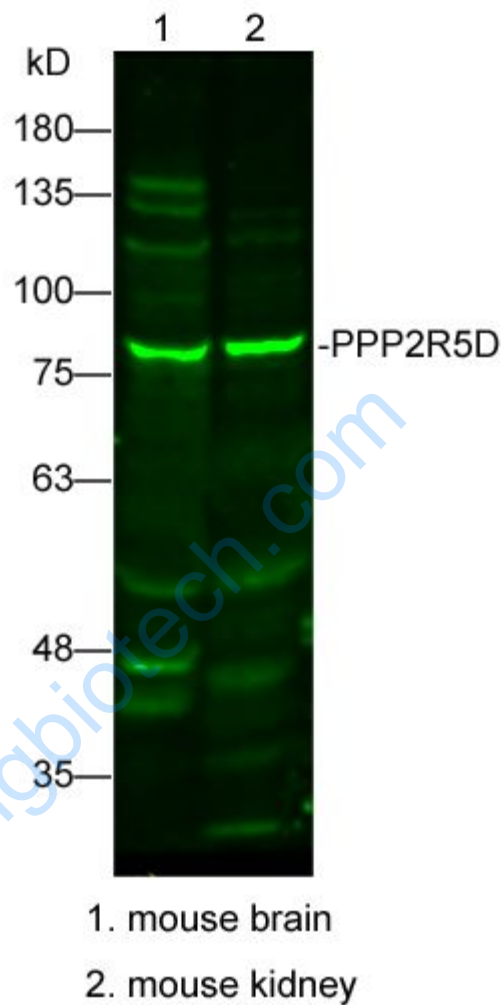
[Unigene: 295009](#)Mouse

Important Note:

This product as supplied is intended for research use only, not for use in human, therapeutic or diagnostic applications.

www.sunlongbiotech.com

Picture:



Sample:

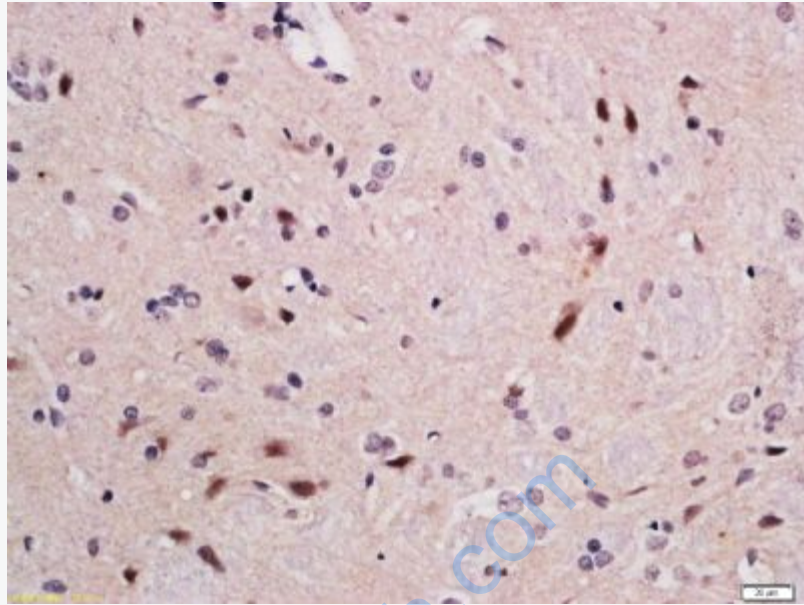
Lane1: mouse brain Lysate at 25 ug

Lane2: mouse kidney Lysate at 25 ug

Primary: Anti-PPP2R5D(SL11992R) at 1/300 dilution

Secondary: IRDye800CW Goat Anti-Rabbit IgG at 1/20000 dilution

Predicted band size: 70kD Observed band size: 78kD



Tissue/cell: rat brain tissue; 4% Paraformaldehyde-fixed and paraffin-embedded;
Antigen retrieval: citrate buffer (0.01M, pH 6.0), Boiling bathing for 15min; Block endogenous peroxidase by 3% Hydrogen peroxide for 30min; Blocking buffer (normal goat serum,C-0005) at 37°C for 20 min;
Incubation: Anti-PPP2R5D Polyclonal Antibody, Unconjugated(SL11992R) 1:200, overnight at 4°C, followed by conjugation to the secondary antibody(SP-0023) and DAB(C-0010) staining