



Rabbit Anti-Phosphoserine/threonine antibody

SL11994R

Product Name:	Phosphoserine/threonine
Chinese Name:	磷酸化丝氨酸/苏氨酸抗体
Alias:	phospho-Ser/Phospho-Thr; pan phospho-Ser/Phospho-Thr; pan-phospho-Ser/Phospho-Thr; pS/pT; p-S/p-T; pSER/pThr; p-SER/p-Thr; p-Sp-T; pan pS/pT; pan p-S/p-T; pan pSER/pThr; pan p-SER/p-Thr; pan p-Sp-T..
Organism Species:	Rabbit
Clonality:	Polyclonal
React Species:	Phosphoserine/threonine
Applications:	IHC-P=1:400-800IHC-F=1:400-800ICC=1:100-500IF=1:100-500 (Paraffin sections need antigen repair) not yet tested in other applications. optimal dilutions/concentrations should be determined by the end user.
Cellular localization:	cytoplasmic
Form:	Lyophilized or Liquid
Concentration:	1mg/ml
immunogen:	KLH conjugated synthesised phosphopeptide contain Phosphoserine and Phosphothreonine:(p-S)(p-T)-NH ₂
Lsotype:	IgG
Purification:	affinity purified by Protein A
Storage Buffer:	0.01M TBS(pH7.4) with 1% BSA, 0.03% Proclin300 and 50% Glycerol.
Storage:	Store at -20 °C for one year. Avoid repeated freeze/thaw cycles. The lyophilized antibody is stable at room temperature for at least one month and for greater than a year when kept at -20°C. When reconstituted in sterile pH 7.4 0.01M PBS or diluent of antibody the antibody is stable for at least two weeks at 2-4 °C.
PubMed:	PubMed
Product Detail:	A hallmark of signal transduction pathways is the reversible phosphorylation of serine and threonine residues within specific sequences, or motifs, in target proteins. Specific signaling motifs include not only sequences that are recognized by protein kinases, but also those that are recognized by phosphorylation-dependent binding proteins like 14-3-

3. These modular phosphoprotein interacting domains are critical elements in modulating, directing and amplifying intracellular communications. Many critical protein kinases can be regulated by phosphorylation at a specific serine or threonine surrounded by phenylalanine or tyrosine. For example, Akt, an important kinase that regulates cell survival, is activated by phosphorylation at Ser473, a site surrounded by phenylalanine and tyrosine. RSK1, p70 S6 K, and certain PKC isoforms also contain a similar consensus phosphorylation site. Phosphorylation of these sites is required for kinase activity. The Phospho-(Ser/Thr) Phe Antibody is a powerful tool for discovery of new proteins containing this important regulatory motif.

SWISS:

N/A

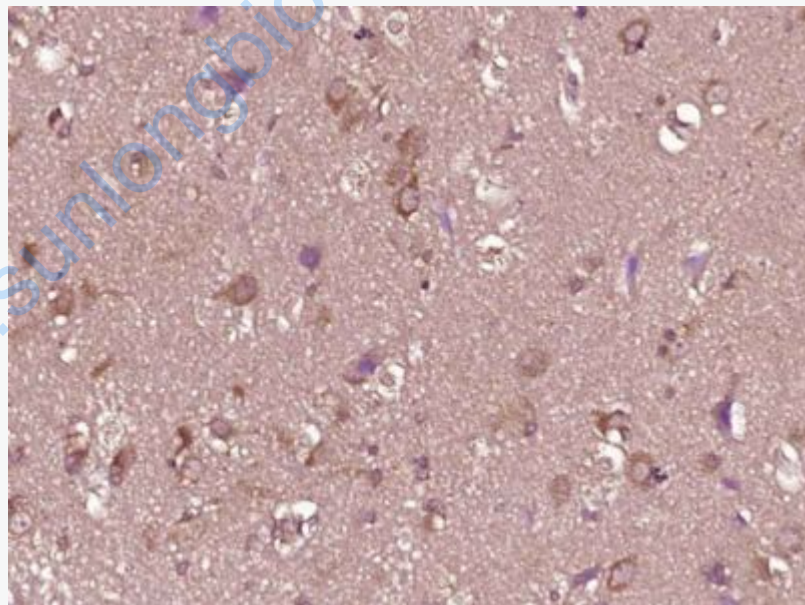
Gene ID:

N/A

Important Note:

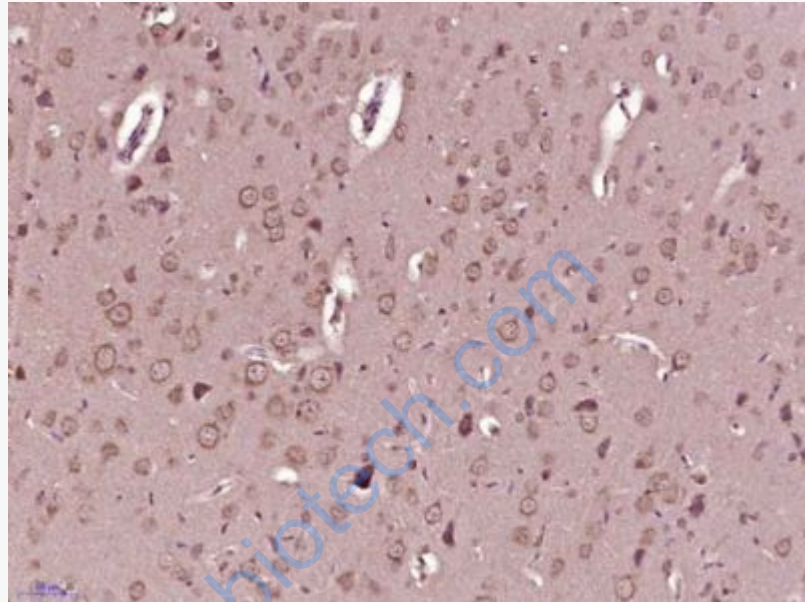
This product as supplied is intended for research use only, not for use in human, therapeutic or diagnostic applications.

Picture:



Paraformaldehyde-fixed, paraffin embedded (Human brain glioma); Antigen retrieval by boiling in sodium citrate buffer (pH6.0) for 15min; Block endogenous peroxidase by 3% hydrogen peroxide for 20 minutes; Blocking buffer (normal goat serum) at 37°C for 30min; Antibody incubation with (Phosphoserine,threonine)

Polyclonal Antibody, Unconjugated (SL11994R) at 1:400 overnight at 4°C, followed by operating according to SP Kit(Rabbit) (sp-0023) instructions and DAB staining.



Paraformaldehyde-fixed, paraffin embedded (Rat brain); Antigen retrieval by boiling in sodium citrate buffer (pH6.0) for 15min; Block endogenous peroxidase by 3% hydrogen peroxide for 20 minutes; Blocking buffer (normal goat serum) at 37°C for 30min; Antibody incubation with (Phosphoserine,threonine) Polyclonal Antibody, Unconjugated (SL11994R) at 1:400 overnight at 4°C, followed by operating according to SP Kit(Rabbit) (sp-0023) instructions and DAB staining.