



Rabbit Anti-PAX1 antibody

SL1199R

| | |
|-------------------------------|--|
| Product Name: | PAX1 |
| Chinese Name: | 配对盒基因1抗体 |
| Alias: | HUP48; OTTHUMP00000030407; Paired box 1; Paired box gene 1; Paired box protein Pax 1; Paired domain gene HuP48; PAX 1; PAX1_HUMAN. |
| Organism Species: | Rabbit |
| Clonality: | Polyclonal |
| React Species: | Human,Mouse,Rat,Chicken,Dog,Pig,Cow,Horse,Rabbit, |
| Applications: | ELISA=1:500-1000IHC-P=1:400-800IHC-F=1:400-800IF=1:100-500 (Paraffin sections need antigen repair) not yet tested in other applications. optimal dilutions/concentrations should be determined by the end user. |
| Molecular weight: | 55kDa |
| Cellular localization: | The nucleus |
| Form: | Lyophilized or Liquid |
| Concentration: | 1mg/ml |
| immunogen: | KLH conjugated synthetic peptide derived from human PAX1:151-250/534 |
| Lsotype: | IgG |
| Purification: | affinity purified by Protein A |
| Storage Buffer: | 0.01M TBS(pH7.4) with 1% BSA, 0.03% Proclin300 and 50% Glycerol. |
| Storage: | Store at -20 °C for one year. Avoid repeated freeze/thaw cycles. The lyophilized antibody is stable at room temperature for at least one month and for greater than a year when kept at -20°C. When reconstituted in sterile pH 7.4 0.01M PBS or diluent of antibody the antibody is stable for at least two weeks at 2-4 °C. |
| PubMed: | PubMed |
| Product Detail: | This gene is a member of the paired box (PAX) family of transcription factors. Members of the PAX family typically contain a paired box domain and a paired-type homeodomain. These genes play critical roles during fetal development. This gene plays a role in pattern formation during embryogenesis and may be essential for development of the vertebral column. This gene is silenced by methylation in ovarian and cervical cancers and may be a tumor suppressor gene. Mutations in this gene are also associated |

with vertebral malformations. [provided by RefSeq, Mar 2012]

Function:

This protein is a transcriptional activator. It may play a role in the formation of segmented structures of the embryo. May play an important role in the normal development of the vertebral column.

Subcellular Location:

Nucleus.

Similarity:

Contains 1 paired domain.

SWISS:

P15863

Gene ID:

5075

Database links:

[Entrez Gene: 5075](#)Human

[Entrez Gene: 18503](#)Mouse

[Entrez Gene: 311505](#)Rat

[Omim: 167411](#)Human

[SwissProt: P15863](#)Human

[SwissProt: P09084](#)Mouse

[Unigene: 349082](#)Human

[Unigene: 315502](#)Mouse

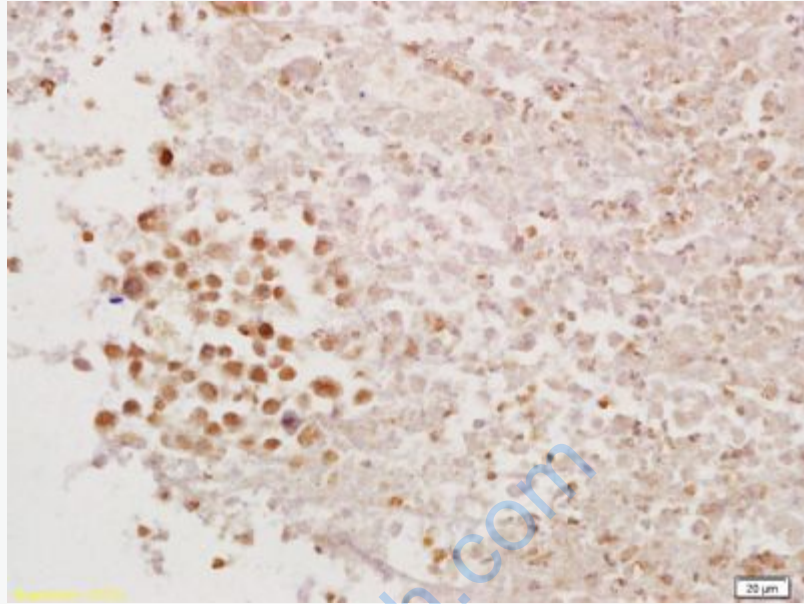
Important Note:

This product as supplied is intended for research use only, not for use in human, therapeutic or diagnostic applications.

同源结构域蛋白 (Homeodomain Proteins)

PAX蛋白在器官发生中起关键作用, 包括促进细胞增殖、细胞世系的特异化、迁移和存活。一些PAX基因在多种癌症类型中表达, 因此可以作为有用的TumourMaker

。

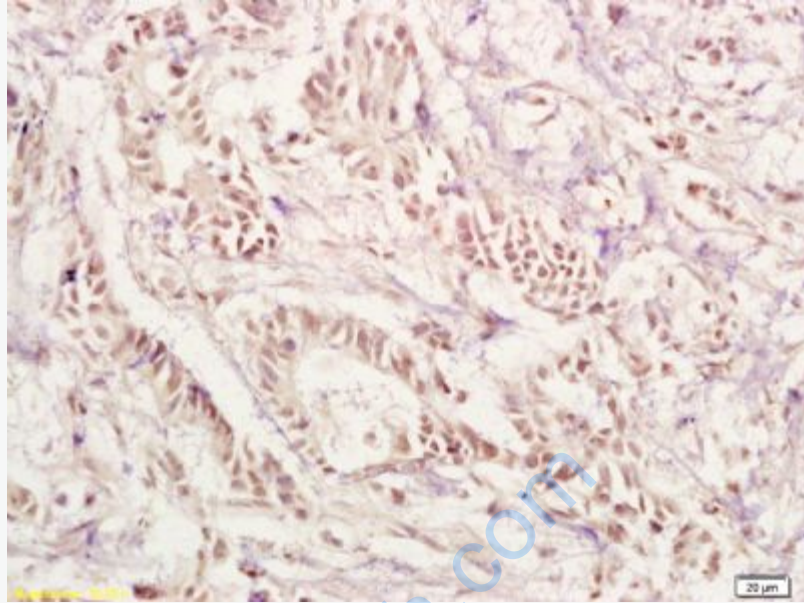


Picture:

Tissue/cell: mouse tumor tissue; 4% Paraformaldehyde-fixed and paraffin-embedded;

Antigen retrieval: citrate buffer (0.01M, pH 6.0), Boiling bathing for 15min; Block endogenous peroxidase by 3% Hydrogen peroxide for 30min; Blocking buffer (normal goat serum,C-0005) at 37°C for 20 min;

Incubation: Anti-PAX1 Polyclonal Antibody, Unconjugated(SL1199R) 1:200, overnight at 4°C, followed by conjugation to the secondary antibody(SP-0023) and DAB(C-0010) staining



Tissue/cell: human gastric carcinoma; 4% Paraformaldehyde-fixed and paraffin-embedded;

Antigen retrieval: citrate buffer (0.01M, pH 6.0), Boiling bathing for 15min; Block endogenous peroxidase by 3% Hydrogen peroxide for 30min; Blocking buffer (normal goat serum,C-0005) at 37°C for 20 min;

Incubation: Anti-PAX1 Polyclonal Antibody, Unconjugated(SL1199R) 1:200, overnight at 4°C, followed by conjugation to the secondary antibody(SP-0023) and DAB(C-0010) staining