



Rabbit Anti-GRM1 antibody

SL12011R

Product Name:	GRM1
Chinese Name:	代谢型谷氨酸受体1A抗体
Alias:	G protein coupled receptor family C group 1 member A; Glutamate receptor metabotropic 1 alpha; Glutamate receptor metabotropic 1; GPRC1A; GRM 1; GRM1 alpha; GRM1; GRM1A; Human metabotropic glutamate receptor 1 alpha mRNA complete cds; Metabotropic glutamate receptor 1 alpha; Metabotropic glutamate receptor 1; mGlu1; MGLUR1; MGLUR1A; mGluR1alpha; metabotropic glutamate receptor 1 isoform alpha; GRM1 HUMAN.
Organism Species:	Rabbit
Clonality:	Polyclonal
React Species:	Human,Mouse,Rat,Chicken,Dog,Pig,Cow,Horse,Sheep,,Danio rerio
Applications:	ELISA=1:500-1000IHC-P=1:400-800IHC-F=1:400-800ICC=1:100-500IF=1:100-500 (Paraffin sections need antigen repair) not yet tested in other applications. optimal dilutions/concentrations should be determined by the end user.
Molecular weight:	130kDa
Cellular localization:	The cell membrane
Form:	Lyophilized or Liquid
Concentration:	1mg/ml
immunogen:	KLH conjugated synthetic peptide derived from human MGLUR1A/Metabotropic Glutamate Receptor 1a:151-250/1194<Extracellular>
Lsotype:	IgG
Purification:	affinity purified by Protein A
Storage Buffer:	0.01M TBS(pH7.4) with 1% BSA, 0.03% Proclin300 and 50% Glycerol.
Storage:	Store at -20 °C for one year. Avoid repeated freeze/thaw cycles. The lyophilized antibody is stable at room temperature for at least one month and for greater than a year when kept at -20°C. When reconstituted in sterile pH 7.4 0.01M PBS or diluent of antibody the antibody is stable for at least two weeks at 2-4 °C.
PubMed:	PubMed
Product Detail:	This gene encodes a metabotropic glutamate receptor that functions by activating

phospholipase C. L-glutamate is the major excitatory neurotransmitter in the central nervous system and activates both ionotropic and metabotropic glutamate receptors. Glutamatergic neurotransmission is involved in most aspects of normal brain function and can be perturbed in many neuropathologic conditions. The canonical alpha isoform of the encoded protein is a disulfide-linked homodimer whose activity is mediated by a G-protein-coupled phosphatidylinositol-calcium second messenger system. This gene may be associated with many disease states, including schizophrenia, bipolar disorder, depression, and breast cancer. Alternative splicing results in multiple transcript variants encoding different isoforms. [provided by RefSeq, May 2013]

Function:

Receptor for glutamate. The activity of this receptor is mediated by a G-protein that activates a phosphatidylinositol-calcium second messenger system. May participate in the central action of glutamate in the CNS, such as long-term potentiation in the hippocampus and long-term depression in the cerebellum.

Subunit:

Homodimer; disulfide-linked. The PPXXF motif binds HOMER1, HOMER2 and HOMER3. Interacts with SIAH1, RYR1, RYR2, ITPR1, SHANK1, SHANK3 and GRASP

Subcellular Location:

Cell Membrane; multi pass membrane protein.

Similarity:

Belongs to the G-protein coupled receptor 3 family.

SWISS:

Q13255

Gene ID:

2911

Database links:

[Entrez Gene: 2911](#) Human

[Entrez Gene: 14816](#) Mouse

[Entrez Gene: 24414](#) Rat

[Omim: 604473](#) Human

[SwissProt: Q13255](#) Human

[SwissProt: P97772](#) Mouse

[SwissProt: P23385](#) Rat

[Unigene: 32945](#) Human

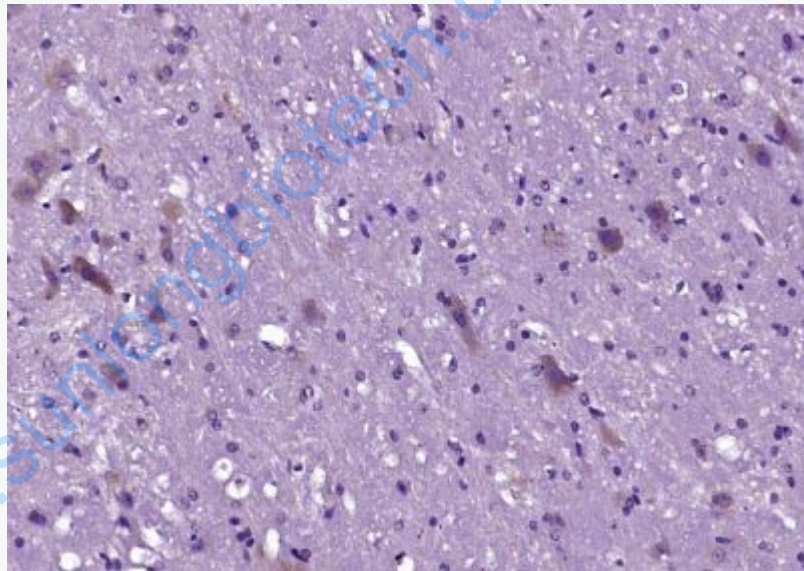
[Unigene: 391904](#) Mouse

[Unigene: 482986](#) Mouse

[Unigene: 87787](#) Rat

Important Note:

This product as supplied is intended for research use only, not for use in human, therapeutic or diagnostic applications.



Picture:

Paraformaldehyde-fixed, paraffin embedded (mouse cerebellum tissue); Antigen retrieval by boiling in sodium citrate buffer (pH6.0) for 15min; Block endogenous peroxidase by 3% hydrogen peroxide for 20 minutes; Blocking buffer (normal goat serum) at 37°C for 30min; Antibody incubation with (GRM1) Polyclonal Antibody, Unconjugated (SL12011R) at 1:400 overnight at 4°C, followed by operating according to SP Kit(Rabbit) (sp-0023) instructions and DAB staining.