



## Rabbit Anti-MGLUR1 + MGLUR5 antibody

SL12014R

<b>Product Name:</b>	MGLUR1 + MGLUR5
<b>Chinese Name:</b>	促代谢型谷氨酸受体1+5抗体
<b>Alias:</b>	MGLUR1+MGLUR5; GPRC1A; GPRC1E; GRM1; GRM1A; GRM5; Metabotropic glutamate receptor 1; Metabotropic glutamate receptor 5; mGlu1; mGlu5; MGLUR1; MGLUR1A; MGLUR5; MGLUR5B; GRM1_HUMAN; GRM5_HUMAN.
<b>Organism Species:</b>	Rabbit
<b>Clonality:</b>	Polyclonal
<b>React Species:</b>	Human,Mouse,Rat,Chicken,Dog,Pig,Cow,Horse,Sheep,
<b>Applications:</b>	WB=1:500-2000ELISA=1:500-1000 not yet tested in other applications. optimal dilutions/concentrations should be determined by the end user.
<b>Molecular weight:</b>	130kDa
<b>Cellular localization:</b>	The cell membrane
<b>Form:</b>	Lyophilized or Liquid
<b>Concentration:</b>	1mg/ml
<b>immunogen:</b>	KLH conjugated synthetic peptide derived from human MGLUR1 + MGLUR5:501-600/1194
<b>Lsotype:</b>	IgG
<b>Purification:</b>	affinity purified by Protein A
<b>Storage Buffer:</b>	0.01M TBS(pH7.4) with 1% BSA, 0.03% Proclin300 and 50% Glycerol.
<b>Storage:</b>	Store at -20 °C for one year. Avoid repeated freeze/thaw cycles. The lyophilized antibody is stable at room temperature for at least one month and for greater than a year when kept at -20°C. When reconstituted in sterile pH 7.4 0.01M PBS or diluent of antibody the antibody is stable for at least two weeks at 2-4 °C.
<b>PubMed:</b>	<a href="#">PubMed</a>
<b>Product Detail:</b>	Glutamate is the main excitatory neurotransmitter in the brain. For many years it had been considered to act only on the ligand-gated receptor channels-termed NMDA, AMPA and kainite receptors that are involved in the fast excitatory synaptic transmission. Recently, glutamate has been shown to regulate enzymes producing second messengers via specific receptors coupled to G-proteins. These receptors are

called metabotropic glutamate receptors. In expression systems, Group-I receptors stimulate phospholipase C as revealed by an increase in phosphoinositide turnover and calcium release from internal stores. Group-II and -III receptors are coupled to the inhibition of adenylyl cyclase. The Group-I receptors include Metabotropic Glutamate Receptor 5 and Metabotropic Glutamate Receptor 1a. The Group-II receptors include mGluR2 and mGluR3.

**Function:**

Receptor for glutamate. The activity of this receptor is mediated by a G-protein that activates a phosphatidylinositol-calcium second messenger system. May participate in the central action of glutamate in the CNS, such as long-term potentiation in the hippocampus and long-term depression in the cerebellum.

**Subunit:**

Homodimer; disulfide-linked. The PPXXF motif binds HOMER1, HOMER2 and HOMER3. Interacts with SIAH1, RYR1, RYR2, ITPR1, SHANK1, SHANK3 and GRASP

**Subcellular Location:**

Cell membrane; Multi-pass membrane protein.

**Similarity:**

Belongs to the G-protein coupled receptor 3 family.

**SWISS:**

Q13255

**Gene ID:**

2911

**Database links:**

[Entrez Gene: 2911](#)Human

[Entrez Gene: 14816](#)Mouse

[Entrez Gene: 24414](#)Rat

[Omim: 604473](#)Human

[SwissProt: Q13255](#)Human

[SwissProt: P97772](#)Mouse

[SwissProt: P23385](#)Rat

[Unigene: 32945](#)Human

[Unigene: 391904](#)Mouse

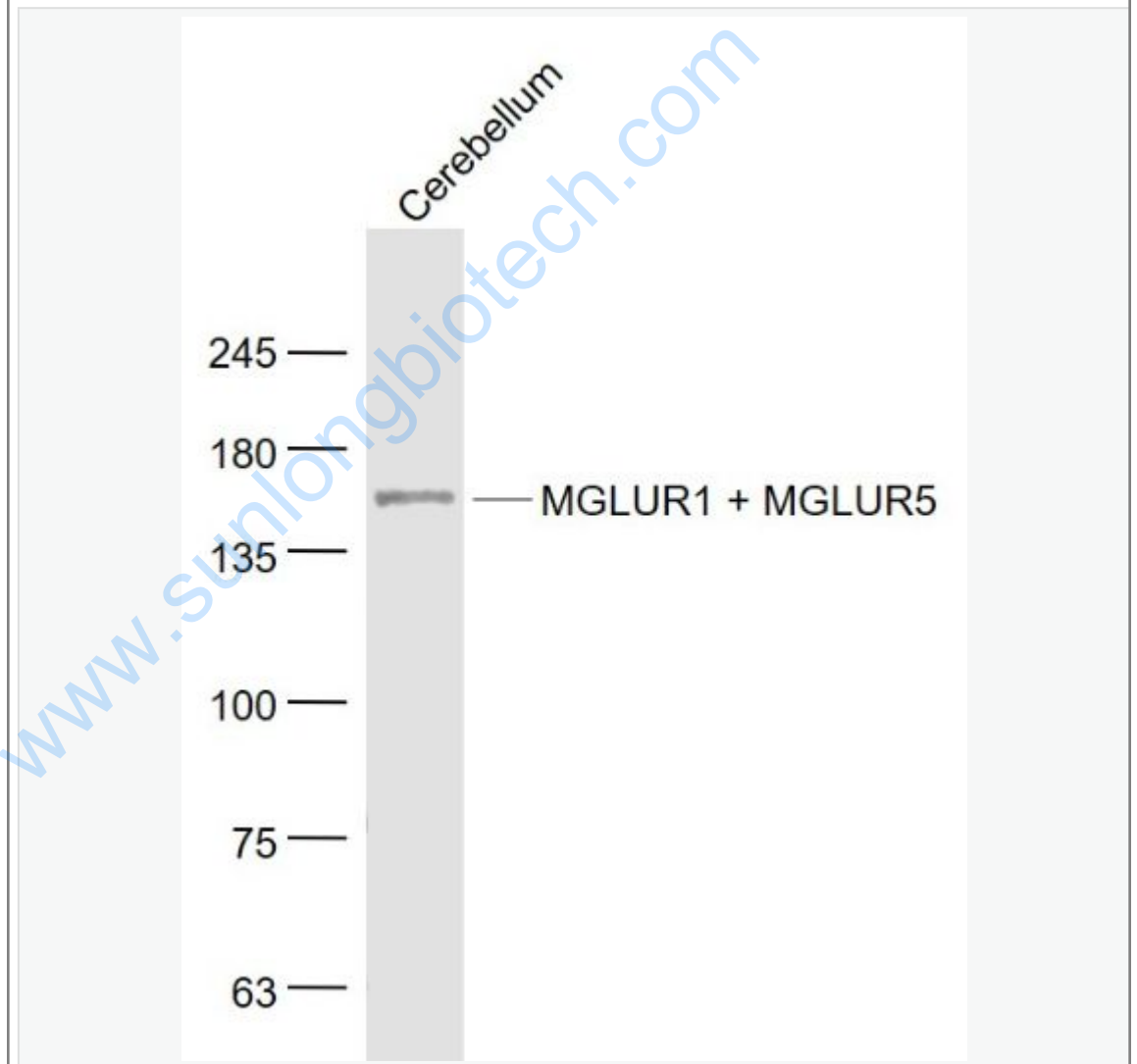
[Unigene: 482986](#)Mouse

[Unigene: 87787](#)Rat

**Important Note:**

This product as supplied is intended for research use only, not for use in human, therapeutic or diagnostic applications.

Picture:



Sample:

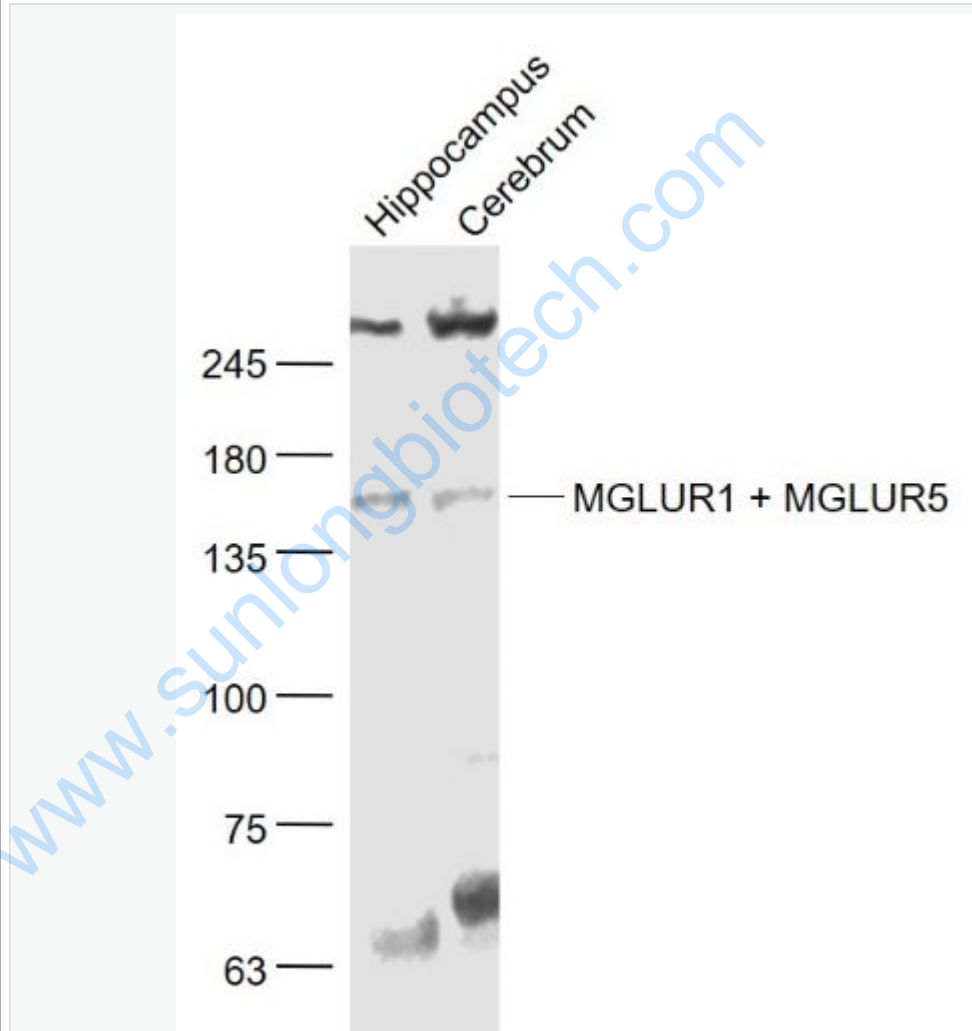
Cerebellum (Mouse) Lysate at 40 ug

Primary: Anti- MGLUR1 + MGLUR5 (SL12014R) at 1/1000 dilution

Secondary: IRDye800CW Goat Anti-Rabbit IgG at 1/20000 dilution

Predicted band size: 130 kD

Observed band size: 150 kD



Sample:

Hippocampus (Mouse) Lysate at 40 ug

Cerebrum (Mouse) Lysate at 40 ug

Primary: Anti- MGLUR1 + MGLUR5 (SL12014R) at 1/1000 dilution

Secondary: IRDye800CW Goat Anti-Rabbit IgG at 1/20000 dilution

Predicted band size: 130 kD

Observed band size: 150 kD

[www.sunlongbiotech.com](http://www.sunlongbiotech.com)