



## Rabbit Anti-NPFF1 Receptor antibody

SL12018R

|                               |                                                                                                                                                                                                                                                                                                                               |
|-------------------------------|-------------------------------------------------------------------------------------------------------------------------------------------------------------------------------------------------------------------------------------------------------------------------------------------------------------------------------|
| <b>Product Name:</b>          | NPFF1 Receptor                                                                                                                                                                                                                                                                                                                |
| <b>Chinese Name:</b>          | G protein-coupled receptor147抗体                                                                                                                                                                                                                                                                                               |
| <b>Alias:</b>                 | NPFF1 Receptor; G Protein Coupled Receptor 147; G-protein coupled receptor 147; GPR147; Neuropeptide FF receptor 1; NPFF1; NPFF1_HUMAN; NPFF1R1; NPFFR1; RFamide related peptide receptor OT7T022; RFamide-related peptide receptor OT7T022.                                                                                  |
| <b>Organism Species:</b>      | Rabbit                                                                                                                                                                                                                                                                                                                        |
| <b>Clonality:</b>             | Polyclonal                                                                                                                                                                                                                                                                                                                    |
| <b>React Species:</b>         | Human,Mouse,Rat,Dog,Pig,Cow,Horse,Rabbit,Sheep,                                                                                                                                                                                                                                                                               |
| <b>Applications:</b>          | WB=1:500-2000ELISA=1:500-1000IHC-P=1:400-800IHC-F=1:400-800ICC=1:100-500IF=1:100-500 (Paraffin sections need antigen repair)<br>not yet tested in other applications.<br>optimal dilutions/concentrations should be determined by the end user.                                                                               |
| <b>Molecular weight:</b>      | 48kDa                                                                                                                                                                                                                                                                                                                         |
| <b>Cellular localization:</b> | The cell membrane                                                                                                                                                                                                                                                                                                             |
| <b>Form:</b>                  | Lyophilized or Liquid                                                                                                                                                                                                                                                                                                         |
| <b>Concentration:</b>         | 1mg/ml                                                                                                                                                                                                                                                                                                                        |
| <b>immunogen:</b>             | KLH conjugated synthetic peptide derived from human GPR147/NPFF1 Receptor:151-260/430<Extracellular>                                                                                                                                                                                                                          |
| <b>Lsotype:</b>               | IgG                                                                                                                                                                                                                                                                                                                           |
| <b>Purification:</b>          | affinity purified by Protein A                                                                                                                                                                                                                                                                                                |
| <b>Storage Buffer:</b>        | 0.01M TBS(pH7.4) with 1% BSA, 0.03% Proclin300 and 50% Glycerol.                                                                                                                                                                                                                                                              |
| <b>Storage:</b>               | Store at -20 °C for one year. Avoid repeated freeze/thaw cycles. The lyophilized antibody is stable at room temperature for at least one month and for greater than a year when kept at -20°C. When reconstituted in sterile pH 7.4 0.01M PBS or diluent of antibody the antibody is stable for at least two weeks at 2-4 °C. |
| <b>PubMed:</b>                | <a href="#">PubMed</a>                                                                                                                                                                                                                                                                                                        |
| <b>Product Detail:</b>        | Neuropeptide FF 1 Receptor (NPFF1 or hFF1) and Neuropeptide FF 2 Receptor (NPFF2) belong to the G protein-coupled receptor 1 family. Both NPFF1 and NPFF2 are integral membrane proteins that act as receptors for NPAF (A-18- F-amide) and NPFF                                                                              |

(F-8-F-amide) neuropeptides. Both NPFF proteins may be activated by synthetic or naturally occurring FMRF-amide-like ligands. The receptors are mediated by association with G proteins that activate a phosphatidylinositol-calcium second messenger system. NPFF1 Receptors is highly expressed in the human hypothalamus and amygdala, indicating a possible role for NPFF1 in central autonomic and neuroendocrine control in the human brain. Based in part on NPFF2 Receptor expression in diencephalon and superficial layers of the spinal cord, NPFF2 Receptor is thought to be involved in the modulation of sensory input and opioid analgesia.

**Function:**

Receptor for NPAF (A-18-F-amide) and NPFF (F-8-F-amide) neuropeptides, also known as morphine-modulating peptides. Can also be activated by a variety of naturally occurring or synthetic FMRF-amide like ligands. This receptor mediates its action by association with G proteins that activate a phosphatidylinositol-calcium second messenger system.

**Subcellular Location:**

Cell membrane.

**Similarity:**

Belongs to the G-protein coupled receptor 1 family.

**SWISS:**

Q9GZQ6

**Gene ID:**

64106

**Database links:**

[Entrez Gene: 64106](#) Human

[Entrez Gene: 64107](#) Rat

[Omim: 607448](#) Human

[SwissProt: Q9GZQ6](#) Human

[SwissProt: Q9EP86](#) Rat

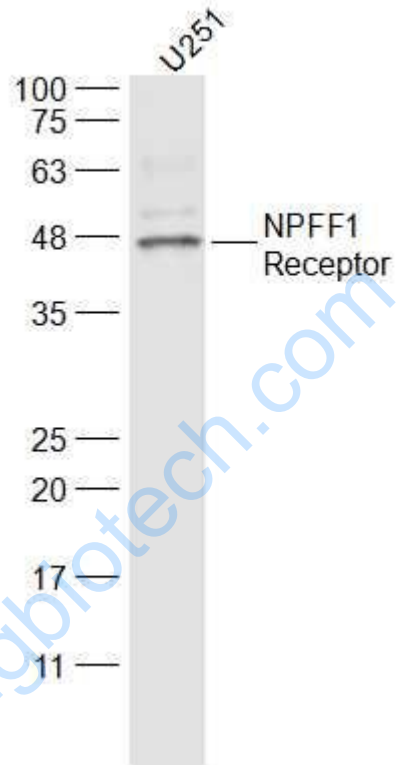
[Unigene: 302026](#) Human

[Unigene: 64483](#) Rat

**Important Note:**

This product as supplied is intended for research use only, not for use in human, therapeutic or diagnostic applications.

Picture:



Sample:

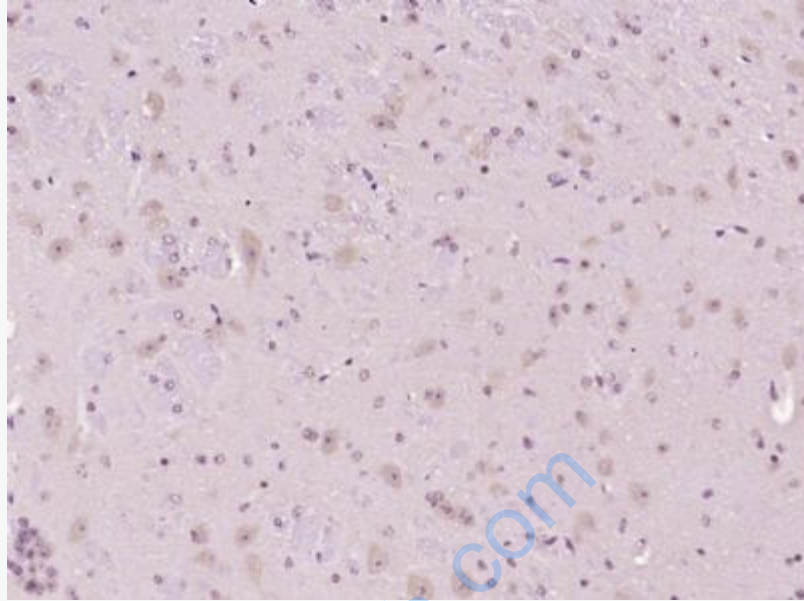
U251(Human) Cell Lysate at 30 ug

Primary: Anti-NPFF1 Receptor (SL12018R) at 1/300 dilution

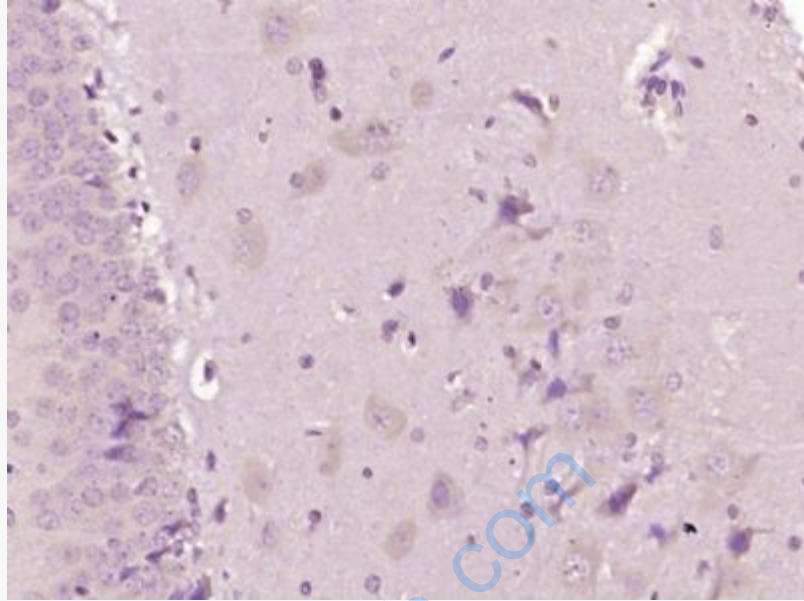
Secondary: IRDye800CW Goat Anti-Rabbit IgG at 1/20000 dilution

Predicted band size: 48 kD

Observed band size: 48 kD



Paraformaldehyde-fixed, paraffin embedded (Mouse brain); Antigen retrieval by boiling in sodium citrate buffer (pH6.0) for 15min; Block endogenous peroxidase by 3% hydrogen peroxide for 20 minutes; Blocking buffer (normal goat serum) at 37°C for 30min; Antibody incubation with (NPF1 Receptor) Polyclonal Antibody, Unconjugated (SL12018R) at 1:400 overnight at 4°C, followed by operating according to SP Kit(Rabbit) (sp-0023) instructions and DAB staining.



Paraformaldehyde-fixed, paraffin embedded (Rat brain); Antigen retrieval by boiling in sodium citrate buffer (pH6.0) for 15min; Block endogenous peroxidase by 3% hydrogen peroxide for 20 minutes; Blocking buffer (normal goat serum) at 37°C for 30min; Antibody incubation with (NPF1 Receptor) Polyclonal Antibody, Unconjugated (SL12018R) at 1:400 overnight at 4°C, followed by operating according to SP Kit(Rabbit) (sp-0023) instructions and DAB staining.