



Rabbit Anti-GPR115 antibody

SL12026R

Product Name:	GPR115
Chinese Name:	G protein-coupled receptor115抗体
Alias:	FLJ38076; G protein coupled receptor 115; G protein coupled receptor PGR18; G-protein coupled receptor PGR18; GP115_HUMAN; GPR115; PGR18; Probable G protein coupled receptor 115; Probable G-protein coupled receptor 115; Seven transmembrane helix receptor; GPCR GPR115.
Organism Species:	Rabbit
Clonality:	Polyclonal
React Species:	Human,Mouse,Rat,Pig,Cow,Rabbit,Sheep,
Applications:	WB=1:500-2000ELISA=1:500-1000IHC-P=1:400-800IHC-F=1:400-800ICC=1:100-500IF=1:100-500 (Paraffin sections need antigen repair) not yet tested in other applications. optimal dilutions/concentrations should be determined by the end user.
Molecular weight:	75kDa
Cellular localization:	The cell membrane
Form:	Lyophilized or Liquid
Concentration:	1mg/ml
immunogen:	KLH conjugated synthetic peptide derived from human G protein coupled receptor 115:101-200/695<Extracellular>
Lsotype:	IgG
Purification:	affinity purified by Protein A
Storage Buffer:	0.01M TBS(pH7.4) with 1% BSA, 0.03% Proclin300 and 50% Glycerol.
Storage:	Store at -20 °C for one year. Avoid repeated freeze/thaw cycles. The lyophilized antibody is stable at room temperature for at least one month and for greater than a year when kept at -20°C. When reconstituted in sterile pH 7.4 0.01M PBS or diluent of antibody the antibody is stable for at least two weeks at 2-4 °C.
PubMed:	PubMed
Product Detail:	FLJ38076; G protein coupled receptor 115; G protein coupled receptor PGR18; G-protein coupled receptor PGR18; GP115_HUMAN; GPR115; PGR18; Probable G protein coupled receptor 115; Probable G-protein coupled receptor 115; Seven

transmembrane helix receptor.

Function:

Orphan receptor.

Subcellular Location:

Cell membrane; Multi-pass membrane protein.

Similarity:

Belongs to the G-protein coupled receptor 2 family. LN-TM7 subfamily.
Contains 1 GPS domain.

SWISS:

Q8IZF3

Gene ID:

221393

Database links:

[Entrez Gene: 221393](#)Human

[Entrez Gene: 78249](#)Mouse

[Omim: 614268](#)Human

[SwissProt: Q8IZF3](#)Human

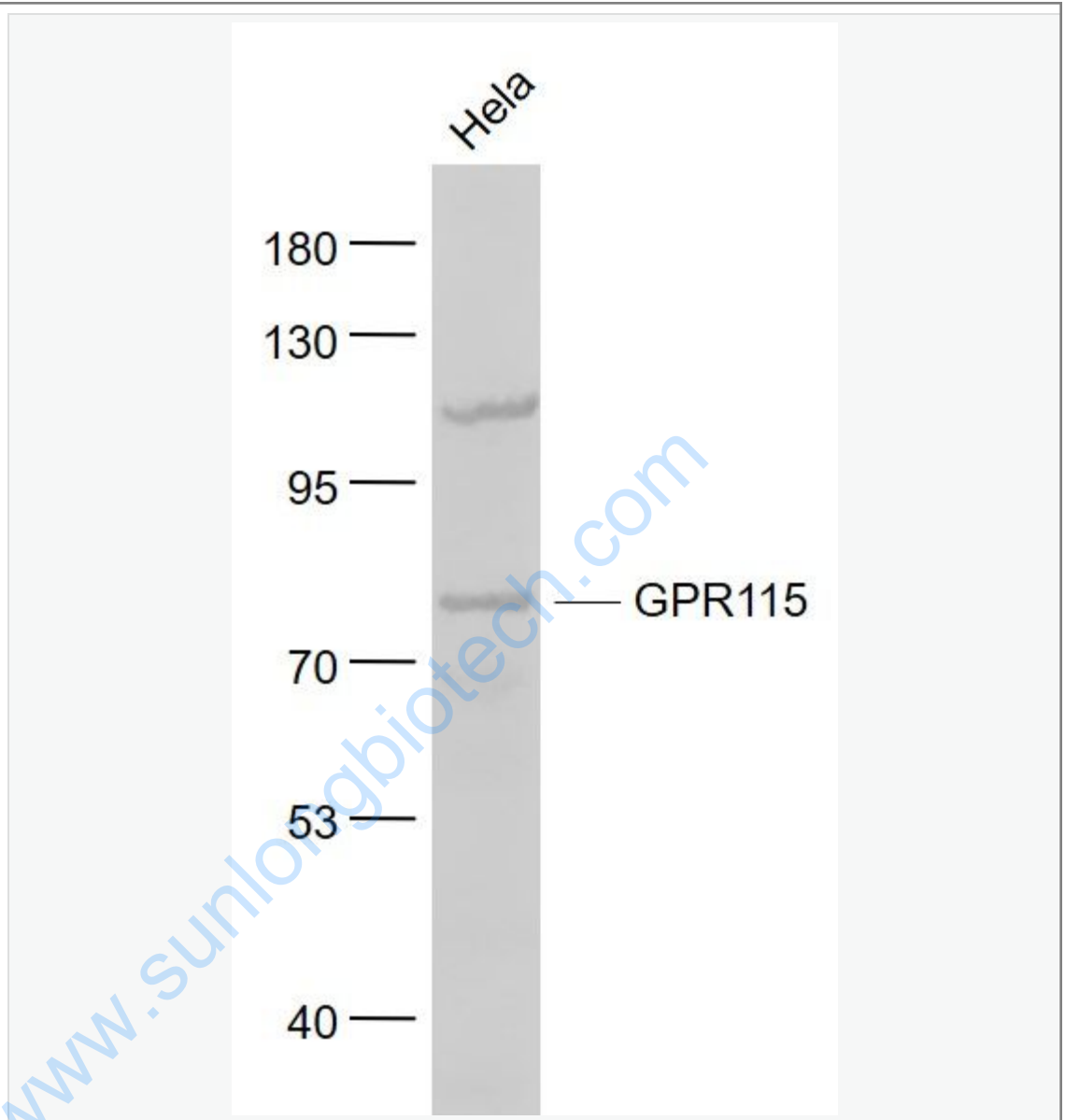
[SwissProt: Q9D2L6](#)Mouse

[Unigene: 150131](#)Human

Important Note:

This product as supplied is intended for research use only, not for use in human, therapeutic or diagnostic applications.

Picture:



Sample:

HeLa(Human) Cell Lysate at 30 ug

Primary: Anti- GPR115 (SL12026R) at 1/1000 dilution

Secondary: IRDye800CW Goat Anti-Rabbit IgG at 1/20000 dilution

Predicted band size: 75 kD

Observed band size: 75 kD

