



## Rabbit Anti-GRASP antibody

SL12032R

|                               |   |
|-------------------------------|---|
| <b>Product Name:</b>          | GRASP   |
| <b>Chinese Name:</b>          | 一般受体磷酸肌醇相关支架蛋白1抗体   |
| <b>Alias:</b>                 | General Receptor for phosphoinositides 1; GRASP1; General receptor for phosphoinositides 1-associated scaffold protein; GRASP; GRASP_HUMAN; GRP1 (general receptor for phosphoinositides 1) associated scaffold protein; GRP1 associated scaffold protein; GRP1-associated scaffold protein; Tamalin.                         |
| <b>Organism Species:</b>      | Rabbit  |
| <b>Clonality:</b>             | Polyclonal  |
| <b>React Species:</b>         | Human,Mouse,Rat,Dog,Pig,Cow,Horse,  |
| <b>Applications:</b>          | ELISA=1:500-1000IHC-P=1:400-800IHC-F=1:400-800ICC=1:100-500IF=1:100-500 (Paraffin sections need antigen repair)<br>not yet tested in other applications.<br>optimal dilutions/concentrations should be determined by the end user.  |
| <b>Molecular weight:</b>      | 45kDa   |
| <b>Cellular localization:</b> | cytoplasmicThe cell membrane  |
| <b>Form:</b>                  | Lyophilized or Liquid   |
| <b>Concentration:</b>         | 1mg/ml  |
| <b>immunogen:</b>             | KLH conjugated synthetic peptide derived from human GRASP/General Receptor for phosphoinositides 1:156-260/395  |
| <b>Lsotype:</b>               | IgG   |
| <b>Purification:</b>          | affinity purified by Protein A  |
| <b>Storage Buffer:</b>        | 0.01M TBS(pH7.4) with 1% BSA, 0.03% Proclin300 and 50% Glycerol.  |
| <b>Storage:</b>               | Store at -20 °C for one year. Avoid repeated freeze/thaw cycles. The lyophilized antibody is stable at room temperature for at least one month and for greater than a year when kept at -20°C. When reconstituted in sterile pH 7.4 0.01M PBS or diluent of antibody the antibody is stable for at least two weeks at 2-4 °C. |
| <b>PubMed:</b>                | <a href="#">PubMed</a>  |
| <b>Product Detail:</b>        | This gene encodes a protein that functions as a molecular scaffold, linking receptors, including group 1 metabotropic glutamate receptors, to neuronal proteins. The encoded protein contains conserved domains, including a leucine zipper sequence, PDZ domain  |

and a C-terminal PDZ-binding motif. Alternately spliced transcript variants have been observed for this gene.[provided by RefSeq, Dec 2012]

**Function:**

Plays a role in intracellular trafficking and contributes to the macromolecular organization of group 1 metabotropic glutamate receptors (mGluRs) at synapses.

**Subunit:**

Heteromer. Composed of GRASP, PSCD2 and at least one GRM1. Also interacts with PSCD3, GRM2, GRM3 and GRM5

**Subcellular Location:**

Cytoplasm, perinuclear region (By similarity). Cell membrane; Peripheral membrane protein; Cytoplasmic side (By similarity). Cell junction, synapse, postsynaptic cell membrane (By similarity). Note=Localized at postsynaptic membranes.

**Similarity:**

Contains 1 PDZ (DHR) domain.

**SWISS:**

Q7Z6J2

**Gene ID:**

160622

**Database links:**

[Entrez Gene: 160622](#) Human

[Entrez Gene: 56149](#) Mouse

[Entrez Gene: 192254](#) Rat

[Omim: 612027](#) Human

[SwissProt: Q7Z6J2](#) Human

[SwissProt: Q9JJA9](#) Mouse

[SwissProt: Q8R4T5](#) Rat

[Unigene: 407202](#) Human

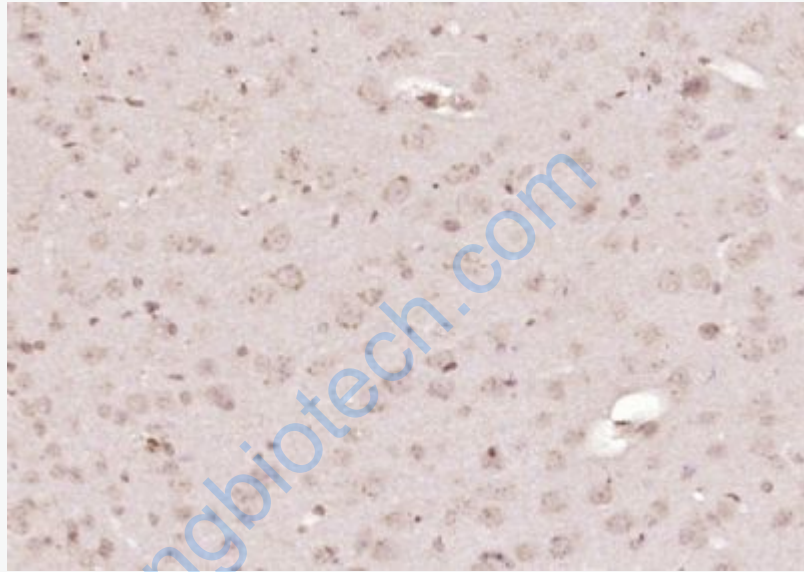
[Unigene: 621295](#) Human

[Unigene: 276573](#) Mouse

[Unigene: 82758](#) Rat

**Important Note:**

This product as supplied is intended for research use only, not for use in human, therapeutic or diagnostic applications.



**Picture:**

Paraformaldehyde-fixed, paraffin embedded (mouse brain tissue); Antigen retrieval by boiling in sodium citrate buffer (pH6.0) for 15min; Block endogenous peroxidase by 3% hydrogen peroxide for 20 minutes; Blocking buffer (normal goat serum) at 37°C for 30min; Antibody incubation with (GRASP) Polyclonal Antibody, Unconjugated (SL12032R) at 1:400 overnight at 4°C, followed by operating according to SP Kit(Rabbit) (sp-0023) instructions and DAB staining.