



Rabbit Anti-ADRA2C antibody

SL12040R

Product Name:	ADRA2C
Chinese Name:	α 2C-AR肾上腺素能受体抗体
Alias:	alpha 2C Adrenergic Receptor; Adra 2c; Adra 2c; ADRA2C; ADRA2L2; ADRA2L2; ADRA2RL2; ADRA2RL2; ADRARL2; ADRARL2; Adrenergic alpha 2C receptor; Adrenoceptor alpha 2C; Alpha 2C adrenergic receptor; Alpha 2C adrenergic receptor subtype C4; Alpha 2C adrenoceptor; Alpha 2C adrenoceptor; Alpha 2CAR; alpha2 AR C4; alpha2 AR C4; alpha2 C4; alpha2 C4; alpha2C; alpha2C; ALPHA2CAR; alpha2cii-adrenergic receptor; Subtype alpha2 C4; Subtype alpha2 C4; ADA2C HUMAN.
Organism Species:	Rabbit
Clonality:	Polyclonal
React Species:	Human,Mouse,Rat,Dog,Pig,
Applications:	ELISA=1:500-1000IHC-P=1:400-800IHC-F=1:400-800Flow-Cyt=1 μ g/TestICC=1:100-500IF=1:100-500 (Paraffin sections need antigen repair) not yet tested in other applications. optimal dilutions/concentrations should be determined by the end user.
Molecular weight:	49kDa
Cellular localization:	The cell membrane
Form:	Lyophilized or Liquid
Concentration:	1mg/ml
immunogen:	KLH conjugated synthetic peptide derived from human ADRA2C/alpha 2C Adrenergic Receptor:21-120/462<Extracellular>
Lsotype:	IgG
Purification:	affinity purified by Protein A
Storage Buffer:	0.01M TBS(pH7.4) with 1% BSA, 0.03% Proclin300 and 50% Glycerol.
Storage:	Store at -20 °C for one year. Avoid repeated freeze/thaw cycles. The lyophilized antibody is stable at room temperature for at least one month and for greater than a year when kept at -20°C. When reconstituted in sterile pH 7.4 0.01M PBS or diluent of antibody the antibody is stable for at least two weeks at 2-4 °C.
PubMed:	PubMed
Product Detail:	Alpha-2-adrenergic receptors are members of the G protein-coupled receptor

superfamily. They include 3 highly homologous subtypes: alpha2A, alpha2B, and alpha2C. These receptors have a critical role in regulating neurotransmitter release from sympathetic nerves and from adrenergic neurons in the central nervous system. The mouse studies revealed that both the alpha2A and alpha2C subtypes were required for normal presynaptic control of transmitter release from sympathetic nerves in the heart and from central noradrenergic neurons. The alpha2A subtype inhibited transmitter release at high stimulation frequencies, whereas the alpha2C subtype modulated neurotransmission at lower levels of nerve activity. This gene encodes the alpha2C subtype, which contains no introns in either its coding or untranslated sequences. [provided by RefSeq, Jul 2008]

Function:

The alpha 2C Adrenergic Receptor controls the release of neurotransmitter from central adrenergic neurons and from sympathetic nerves in the heart. This receptor also plays a role in cognitive and behavioral function. Two variants are produced by alternative splicing. Alpha 2C Adrenergic Receptor has been reported extensively in the brain. Blood, corpus cavernosum, kidney, and heart tissues have also been reported to express the protein.

Subcellular Location:

Cell membrane; Multi-pass membrane protein.

Similarity:

Belongs to the G-protein coupled receptor 1 family. Adrenergic receptor subfamily. ADRA2C sub-subfamily.

SWISS:

P18825

Gene ID:

152

Database links:

[Entrez Gene: 152](#) Human

[Entrez Gene: 11553](#) Mouse

[Entrez Gene: 24175](#) Rat

[Omim: 104250](#) Human

[SwissProt: P18825](#) Human

[SwissProt: Q01337](#) Mouse

[SwissProt: P22086](#) Rat

[Unigene: 123022](#) Human

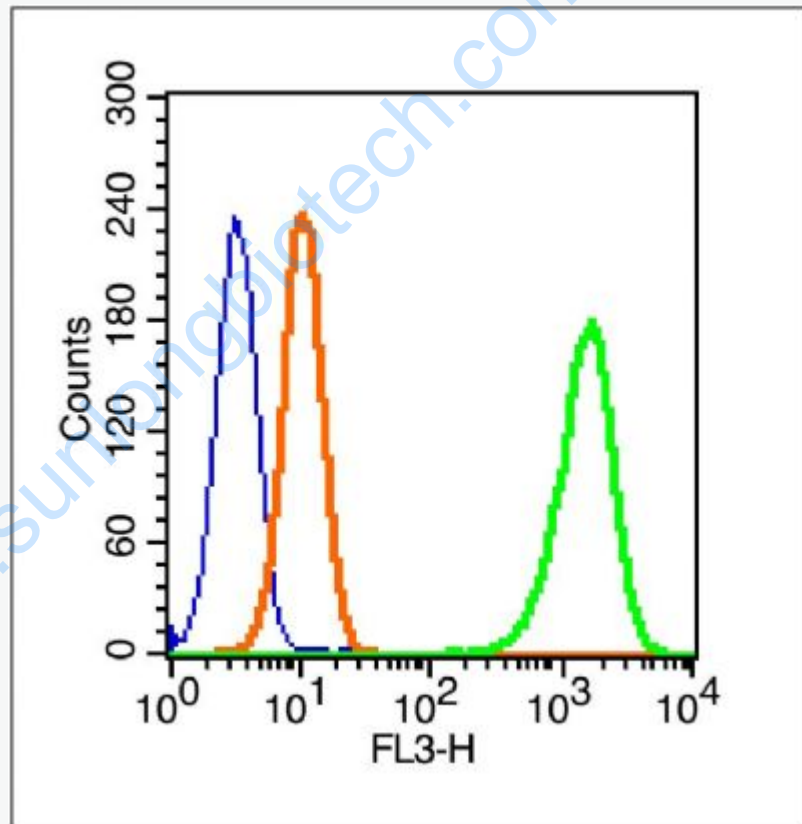
[Unigene: 57205](#) Mouse

[Unigene: 10297](#) Rat

Important Note:

This product as supplied is intended for research use only, not for use in human, therapeutic or diagnostic applications.

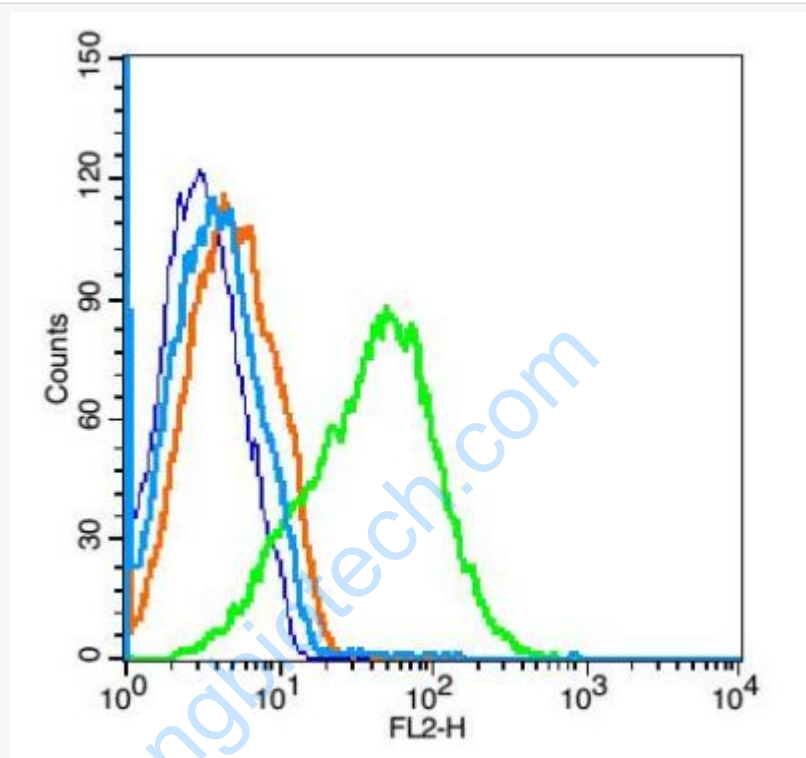
Picture:



Blank control (blue line): A431(fixed with 70% ice-cold methanol overnight at 4°C).

Primary Antibody (green line): Rabbit Anti-ADRA2C/PE-CY5 Conjugated antibody (SL12040R) ,Dilution: 1µg /10⁶ cells;

Isotype Control Antibody (orange line): Rabbit IgG-PE-CY5 .



Blank control(blue):U937 (fixed with 2% paraformaldehyde (10 min)).

Primary Antibody:Rabbit Anti- ADRA2C antibody(SL12040R), Dilution: 1 μ g in 100 μ L 1X PBS containing 0.5% BSA;

Isotype Control Antibody: Rabbit IgG(orange) ,used under the same conditions);

Secondary Antibody: Goat anti-rabbit IgG-PE(white blue), Dilution: 1:200 in 1 X PBS containing 0.5% BSA.