



## Rabbit Anti-5HT1D Receptor antibody

SL12046R

<b>Product Name:</b>	5HT1D Receptor
<b>Chinese Name:</b>	5-羟色胺受体1D抗体
<b>Alias:</b>	SR-1D; 5 HT 1D alpha; 5 HT 1D; 5 HT1B; 5 HT1D; 5HT1D; 5 hydroxytryptamine (serotonin) receptor 1B; 5 hydroxytryptamine (serotonin) receptor 1D G protein coupled; 5 hydroxytryptamine 1B receptor (5 HT 1B) (Serotonin receptor) (5 HT 1D beta) (Serotonin 1D beta receptor) (S12); 5 hydroxytryptamine receptor 1D; HT1DA; HTR1D; HTR1D2; HTR1DA; HTRL; RDC4; S12; Serotonin receptor 1D; 5HT1D HUMAN.
<b>Organism Species:</b>	Rabbit
<b>Clonality:</b>	Polyclonal
<b>React Species:</b>	Human,Mouse,Rat,Rabbit,
<b>Applications:</b>	ELISA=1:500-1000IHC-P=1:400-800IHC-F=1:400-800ICC=1:100-500IF=1:100-500 (Paraffin sections need antigen repair) not yet tested in other applications. optimal dilutions/concentrations should be determined by the end user.
<b>Molecular weight:</b>	42kDa
<b>Cellular localization:</b>	The cell membrane
<b>Form:</b>	Lyophilized or Liquid
<b>Concentration:</b>	1mg/ml
<b>immunogen:</b>	KLH conjugated synthetic peptide derived from human 5HT1D Receptor/SR-1D:2-110/377<Extracellular>
<b>Lsotype:</b>	IgG
<b>Purification:</b>	affinity purified by Protein A
<b>Storage Buffer:</b>	0.01M TBS(pH7.4) with 1% BSA, 0.03% Proclin300 and 50% Glycerol.
<b>Storage:</b>	Store at -20 °C for one year. Avoid repeated freeze/thaw cycles. The lyophilized antibody is stable at room temperature for at least one month and for greater than a year when kept at -20°C. When reconstituted in sterile pH 7.4 0.01M PBS or diluent of antibody the antibody is stable for at least two weeks at 2-4 °C.
<b>PubMed:</b>	<a href="#">PubMed</a>
<b>Product Detail:</b>	The members of the G-protein-coupled receptor family are distinguished by their slow

transmitting response to ligand binding. These seven transmembrane proteins include the adrenergic, serotonin and dopamine receptors. The effect of the signaling molecule can be excitatory or inhibitory depending on the type of receptor to which it binds.  $\beta$ -adrenergic bound to adrenaline activates adenylyl cyclase, while  $\alpha$ 2-adrenergic receptor bound to adrenaline inhibits adenylyl cyclase. Like the  $\alpha$ 2-adrenergic receptor, serotonin receptor functions are also mediated by G proteins that inhibit the activity of adenylyl cyclase. The serotonin receptors have been classified into several categories, designated SR-1–7 (5HT1–7). Subtypes within the SR-1 group include SR-1A, -1B, -1D, -1E and -1F.

**Function:**

This is one of the several different receptors for 5-hydroxytryptamine (serotonin), a biogenic hormone that functions as a neurotransmitter, a hormone, and a mitogen. The activity of this receptor is mediated by G proteins that inhibit adenylate cyclase activity.

**Subcellular Location:**

Cell membrane; Multi-pass membrane protein

**Similarity:**

Belongs to the G-protein coupled receptor 1 family.

**SWISS:**

P28221

**Gene ID:**

3352

**Database links:**

[Entrez Gene: 3352](#)Human

[Entrez Gene: 15552](#)Mouse

[Entrez Gene: 25323](#)Rat

[Omim: 182133](#)Human

[SwissProt: P28221](#)Human

[SwissProt: Q61224](#)Mouse

[SwissProt: P28565](#)Rat

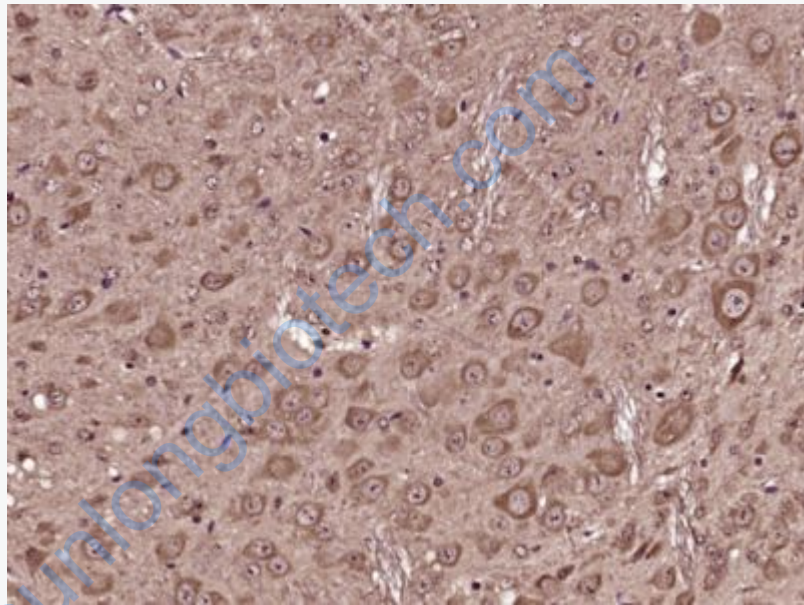
[Unigene: 121482](#)Human

[Unigene: 40573](#)Mouse

[Unigene: 34834Rat](#)

**Important Note:**

This product as supplied is intended for research use only, not for use in human, therapeutic or diagnostic applications.



**Picture:**

Paraformaldehyde-fixed, paraffin embedded (Mouse brain); Antigen retrieval by boiling in sodium citrate buffer (pH6.0) for 15min; Block endogenous peroxidase by 3% hydrogen peroxide for 20 minutes; Blocking buffer (normal goat serum) at 37°C for 30min; Antibody incubation with (5HT1D Receptor) Polyclonal Antibody, Unconjugated (SL12046R) at 1:400 overnight at 4°C, followed by operating according to SP Kit(Rabbit) (sp-0023) instructions and DAB staining.