



Rabbit Anti-5HT1F Receptor antibody

SL12048R

Product Name:	5HT1F Receptor
Chinese Name:	5-羟色胺受体1F抗体
Alias:	SR-1F; 5 HT 1F; 5 HT1F; 5 hydroxytryptamine (serotonin) receptor 1F; 5 hydroxytryptamine 1F receptor; 5 hydroxytryptamine receptor 1E beta; 5 hydroxytryptamine receptor 1F; 5 hydroxytryptamine serotonin receptor 1E beta; 5 hydroxytryptamine serotonin receptor 1F; 5HT 1F; 5HT1F; HTR 1F; HTR1EB; HTR1EL; HTR1F; MR 77; MR77; Serotonin receptor 1E beta; Serotonin receptor gene; 5HT1F HUMAN.
Organism Species:	Rabbit
Clonality:	Polyclonal
React Species:	Human,Mouse,Rat,Dog,Pig,Cow,Rabbit,Sheep,
Applications:	WB=1:500-2000ELISA=1:500-1000IHC-P=1:400-800IHC-F=1:400-800ICC=1:100-500IF=1:100-500 (Paraffin sections need antigen repair) not yet tested in other applications. optimal dilutions/concentrations should be determined by the end user.
Molecular weight:	42kDa
Cellular localization:	The cell membrane
Form:	Lyophilized or Liquid
Concentration:	1mg/ml
immunogen:	KLH conjugated synthetic peptide derived from human 5HT1F Receptor/SR-1F:1-100/366<Extracellular>
Lsotype:	IgG
Purification:	affinity purified by Protein A
Storage Buffer:	0.01M TBS(pH7.4) with 1% BSA, 0.03% Proclin300 and 50% Glycerol.
Storage:	Store at -20 °C for one year. Avoid repeated freeze/thaw cycles. The lyophilized antibody is stable at room temperature for at least one month and for greater than a year when kept at -20°C. When reconstituted in sterile pH 7.4 0.01M PBS or diluent of antibody the antibody is stable for at least two weeks at 2-4 °C.
PubMed:	PubMed
Product Detail:	The members of the G-protein-coupled receptor family are distinguished by their slow

transmitting response to ligand binding. These seven transmembrane proteins include the adrenergic, serotonin and dopamine receptors. The effect of the signaling molecule can be excitatory or inhibitory depending on the type of receptor to which it binds. β -adrenergic bound to adrenaline activates adenylyl cyclase, while α_2 -adrenergic receptor bound to adrenaline inhibits adenylyl cyclase. Like the α_2 -adrenergic receptor, serotonin receptor functions are also mediated by G proteins that inhibit the activity of adenylyl cyclase. The serotonin receptors have been classified into several categories, designated SR-1–7 (5HT1–7). Subtypes within the SR-1 group include SR-1A, -1B, -1D, -1E and -1F.

Function:

5HT1F is one of the several different receptors for 5-hydroxytryptamine (serotonin), a biogenic hormone that functions as a neurotransmitter, a hormone, and a mitogen. The activity of this receptor is mediated by G proteins that inhibit adenylate cyclase activity. 5HT1F is a member of the GPCR family (subfamily: Serotonin). Expression of 5HT1F has been reported in various brain structures, including cortex, hippocampus, trigeminal ganglia, and cerebral blood vessels. Expression in peripheral tissues is limited to uterus, mesentery, and artery. No expression has been detected in heart, kidney, liver, pancreas, or spleen.

Subcellular Location:

Cell membrane; Multi pass membrane protein.

Similarity:

Belongs to the G-protein coupled receptor 1 family.

SWISS:
P30939

Gene ID:
3355

Database links:

[Entrez Gene: 3355](#) Human

[Entrez Gene: 15557](#) Mouse

[Entrez Gene: 60448](#) Rat

[Omim: 182134](#) Human

[SwissProt: P30939](#) Human

[SwissProt: Q02284](#) Mouse

[SwissProt: P30940](#) Rat

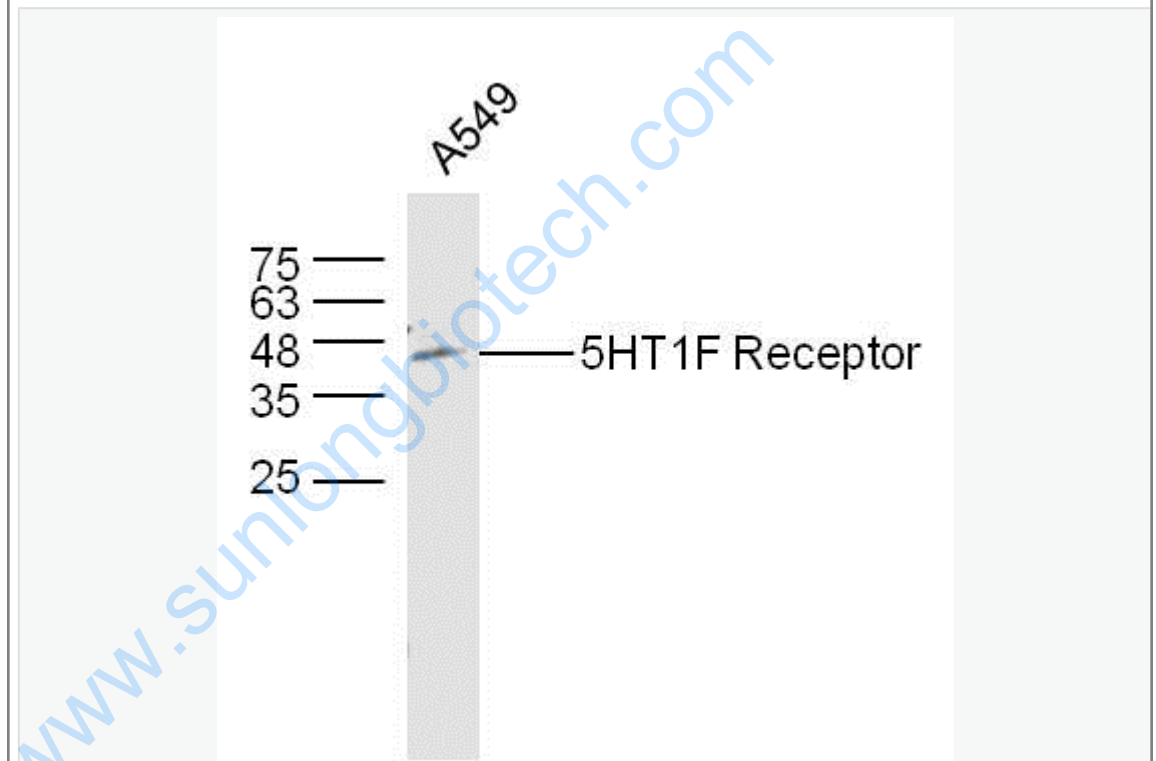
[Unigene: 248136](#) Human

[Unigene: 44301](#) Rat

Important Note:

This product as supplied is intended for research use only, not for use in human, therapeutic or diagnostic applications.

Picture:



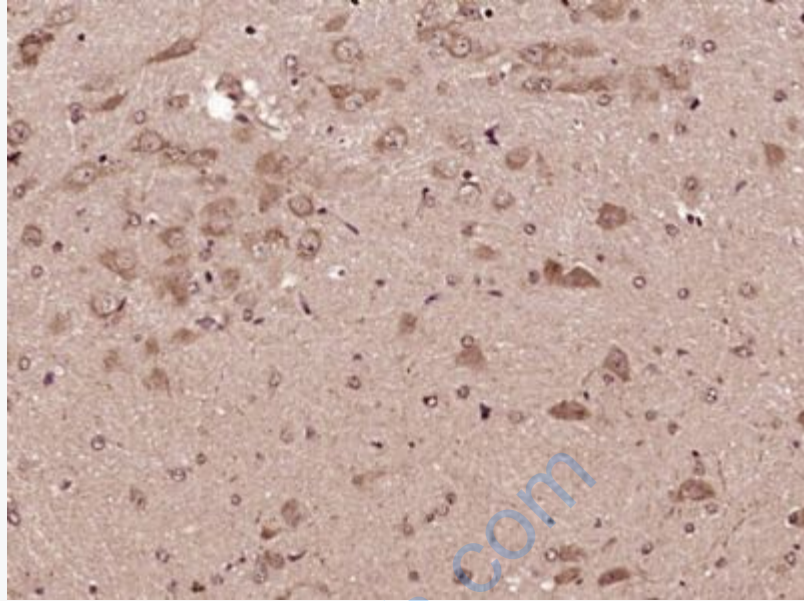
Sample: A549 Cell (Human) Lysate at 40 ug

Primary: Anti- 5HT1F Receptor (SL12048R) at 1/300 dilution

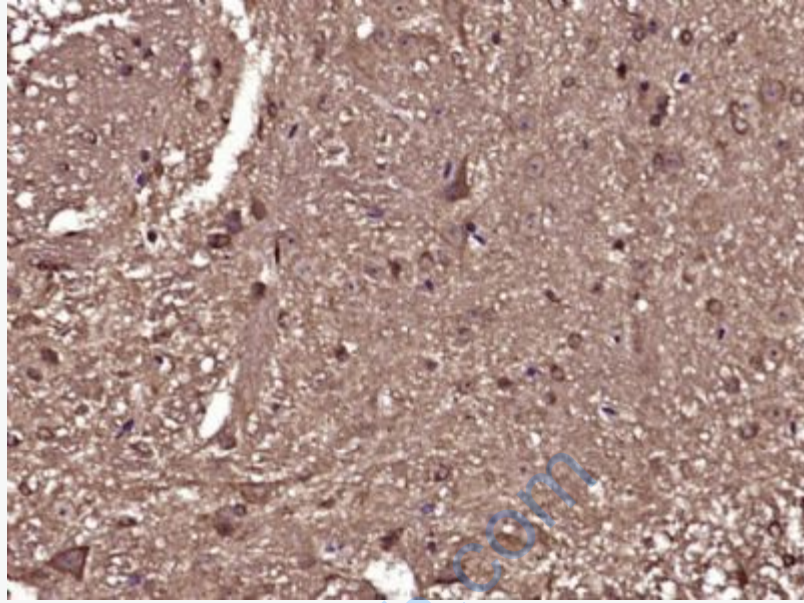
Secondary: IRDye800CW Goat Anti-Rabbit IgG at 1/20000 dilution

Predicted band size: 42 kD

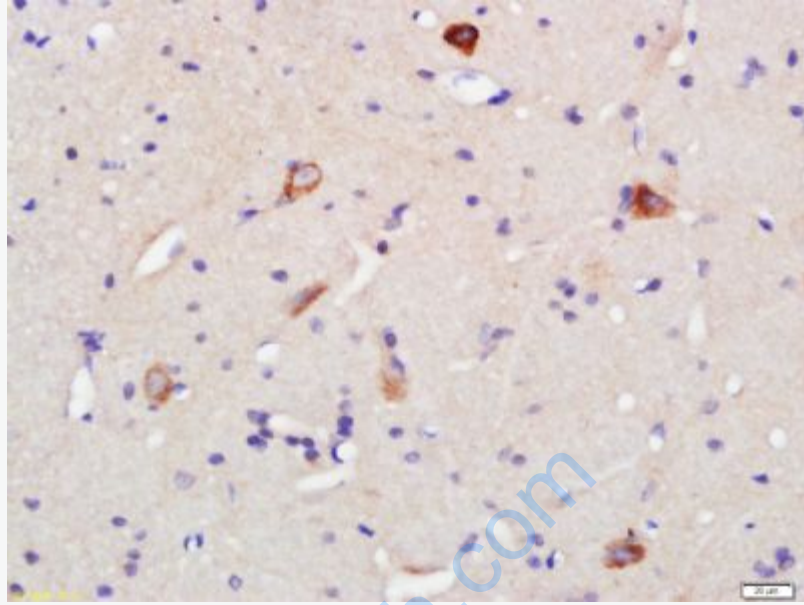
Observed band size: 42 kD



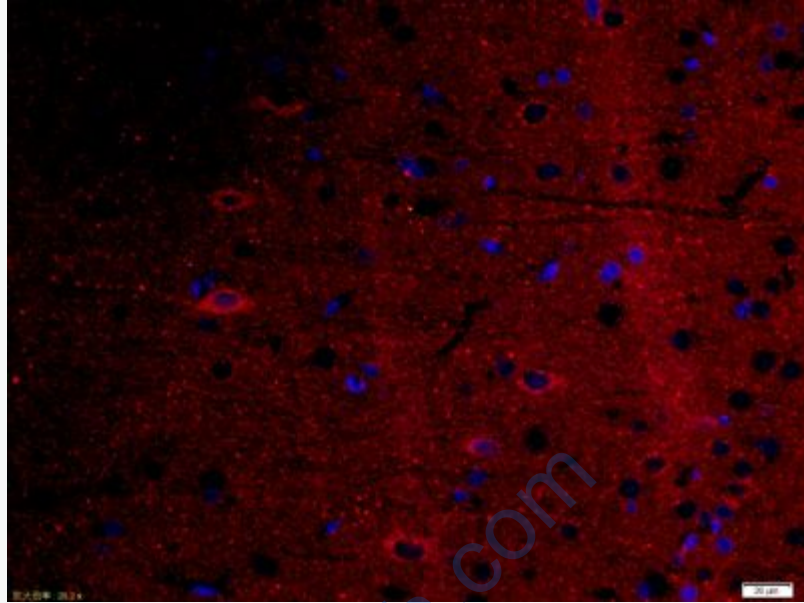
Paraformaldehyde-fixed, paraffin embedded (Mouse brain); Antigen retrieval by boiling in sodium citrate buffer (pH6.0) for 15min; Block endogenous peroxidase by 3% hydrogen peroxide for 20 minutes; Blocking buffer (normal goat serum) at 37°C for 30min; Antibody incubation with (5HT1F Receptor) Polyclonal Antibody, Unconjugated (SL12048R) at 1:400 overnight at 4°C, followed by operating according to SP Kit(Rabbit) (sp-0023) instructions and DAB staining.



Paraformaldehyde-fixed, paraffin embedded (Mouse spinal cord); Antigen retrieval by boiling in sodium citrate buffer (pH6.0) for 15min; Block endogenous peroxidase by 3% hydrogen peroxide for 20 minutes; Blocking buffer (normal goat serum) at 37°C for 30min; Antibody incubation with (5HT1F Receptor) Polyclonal Antibody, Unconjugated (SL12048R) at 1:400 overnight at 4°C, followed by operating according to SP Kit(Rabbit) (sp-0023) instructions and DAB staining.



Tissue/cell: rat brain tissue; 4% Paraformaldehyde-fixed and paraffin-embedded;
Antigen retrieval: citrate buffer (0.01M, pH 6.0), Boiling bathing for 15min; Block endogenous peroxidase by 3% Hydrogen peroxide for 30min; Blocking buffer (normal goat serum,C-0005) at 37°C for 20 min;
Incubation: Anti-5HT1F Polyclonal Antibody, Unconjugated(SL12048R) 1:500, overnight at 4°C, followed by conjugation to the secondary antibody(SP-0023) and DAB(C-0010) staining



Tissue/cell: rat brain tissue;4% Paraformaldehyde-fixed and paraffin-embedded;
Antigen retrieval: citrate buffer (0.01M, pH 6.0), Boiling bathing for 15min;
Blocking buffer (normal goat serum,C-0005) at 37°C for 20 min;
Incubation: Anti-5HT1F Receptor Polyclonal Antibody, Unconjugated(SL12048R)
1:200, overnight at 4°C; The secondary antibody was Goat Anti-Rabbit IgG, Cy3
conjugated(SL12048R)used at 1:200 dilution for 40 minutes at 37°C.
DAPI(5ug/ml,blue,C-0033) was used to stain the cell nuclei