



Rabbit Anti-5HT7 Receptor antibody

SL12056R

Product Name:	5HT7 Receptor
Chinese Name:	5-羟色胺受体7抗体
Alias:	SR-7; HT 7; 5 HT X; 5 hydroxytryptamine (serotonin) receptor 7 (adenylate cyclase coupled); 5 hydroxytryptamine (serotonin) receptor 7; 5 hydroxytryptamine receptor 7; 5-HT-7; 5-HT-X; 5-HT7; 5-hydroxytryptamine receptor 7; 5HT7; 5HT7R_HUMAN; HTR7; Serotonin 5 HT 7 receptor; Serotonin receptor 7.
Organism Species:	Rabbit
Clonality:	Polyclonal
React Species:	Human,Mouse,Rat,
Applications:	WB=1:500-2000ELISA=1:500-1000IHC-P=1:400-800IHC-F=1:400-800ICC=1:100-500IF=1:100-500 (Paraffin sections need antigen repair) not yet tested in other applications. optimal dilutions/concentrations should be determined by the end user.
Molecular weight:	54kDa
Cellular localization:	The cell membrane
Form:	Lyophilized or Liquid
Concentration:	1mg/ml
immunogen:	KLH conjugated synthetic peptide derived from human 5HT7 Receptor/SR-7:51-150/479<Extracellular>
Lsotype:	IgG
Purification:	affinity purified by Protein A
Storage Buffer:	0.01M TBS(pH7.4) with 1% BSA, 0.03% Proclin300 and 50% Glycerol.
Storage:	Store at -20 °C for one year. Avoid repeated freeze/thaw cycles. The lyophilized antibody is stable at room temperature for at least one month and for greater than a year when kept at -20°C. When reconstituted in sterile pH 7.4 0.01M PBS or diluent of antibody the antibody is stable for at least two weeks at 2-4 °C.
PubMed:	PubMed
Product Detail:	The neurotransmitter, serotonin, is thought to play a role in various cognitive and behavioral functions. The serotonin receptor encoded by this gene belongs to the superfamily of G protein-coupled receptors and the gene is a candidate locus for

involvement in autistic disorder and other neuropsychiatric disorders. Three splice variants have been identified which encode proteins that differ in the length of their carboxy terminal ends. [provided by RefSeq, Jul 2008]

Function:

This is one of the several different receptors for 5-hydroxytryptamine (serotonin), a biogenic hormone that functions as a neurotransmitter, a hormone, and a mitogen. The activity of this receptor is mediated by G proteins that stimulate adenylate cyclase.

Subcellular Location:

Cell membrane; Multi-pass membrane protein.

Tissue Specificity:

Isoform A is the predominant isoform in spleen, caudate and hippocampus. Isoform B is expressed at lower levels. Isoform D is a minor isoform in term of expression.

Similarity:

Belongs to the G-protein coupled receptor 1 family.

SWISS:

P34969

Gene ID:

3363

Database links:

[Entrez Gene: 3363](#) Human

[Entrez Gene: 15566](#) Mouse

[Entrez Gene: 65032](#) Rat

[Entrez Gene: 100135549](#) Guinea pig

[Omim: 182137](#) Human

[SwissProt: P50407](#) Guinea pig

[SwissProt: P34969](#) Human

[SwissProt: P32304](#) Mouse

[SwissProt: P32305](#) Rat

[Unigene: 73739](#) Human

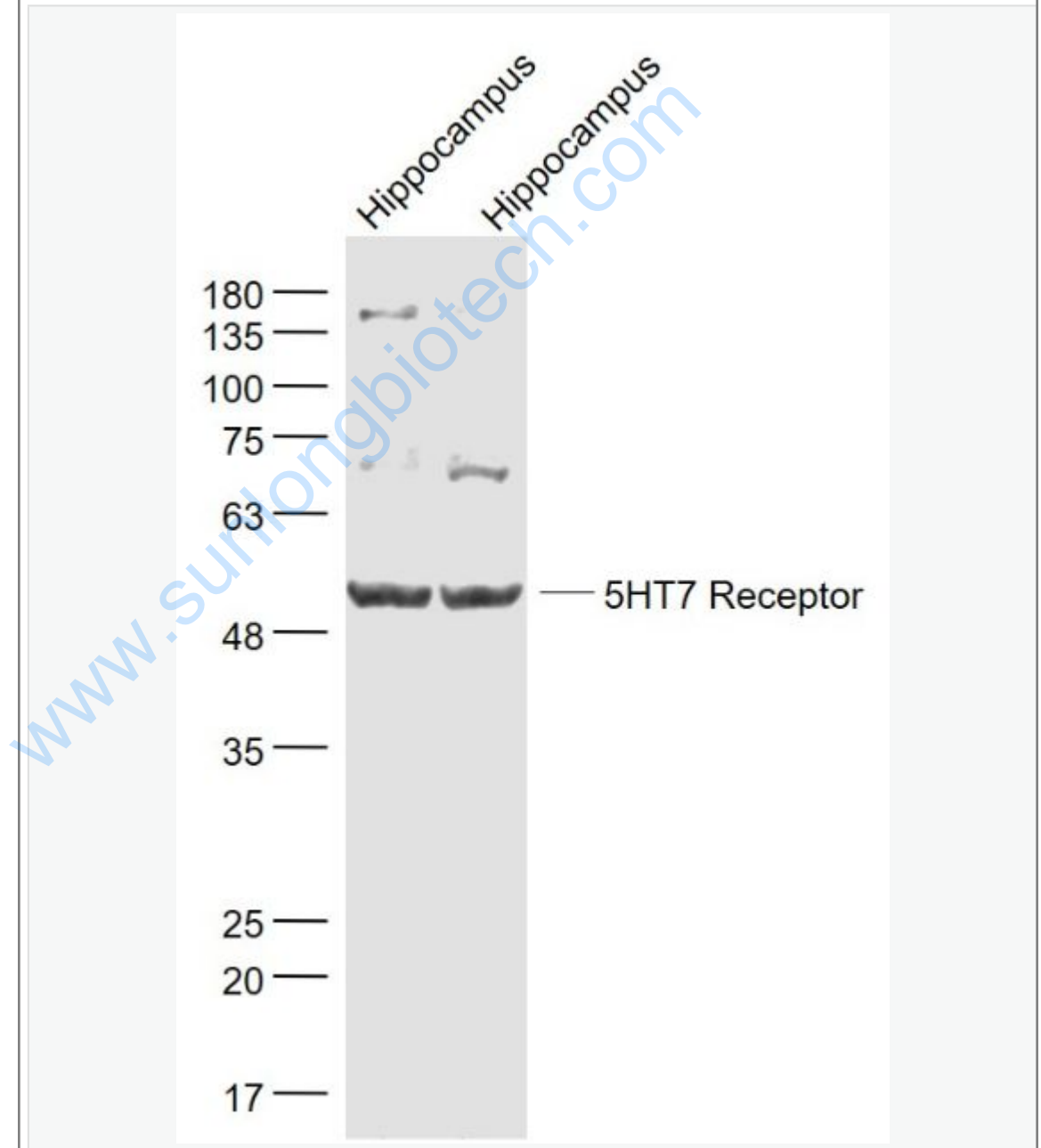
[Unigene: 254266](#) Mouse

[Unigene: 87132](#) Rat

Important Note:

This product as supplied is intended for research use only, not for use in human, therapeutic or diagnostic applications.

Picture:



Sample:

Hippocampus (Mouse) Lysate at 40 ug

Hippocampus(Rat) Lysate at 40 ug

Primary: Anti- 5HT7 Receptor (SL12056R) at 1/1000 dilution

Secondary: IRDye800CW Goat Anti-Rabbit IgG at 1/20000 dilution

Predicted band size: 54 kD

Observed band size: 54 kD

www.sunlongbiotech.com