



Rabbit Anti-GABRB2 antibody

SL12065R

Product Name:	GABRB2
Chinese Name:	G氨基丁酸受体β2/GABAA Rβ2抗体
Alias:	GABA A Receptor beta 2; GABA; GABA(A) receptor subunit beta-2; GABRB2; Gamma aminobutyric acid (GABA) A receptor, beta 2; Gamma aminobutyric acid A receptor beta 2; Gamma-aminobutyric acid receptor subunit beta-2; Gamma-aminobutyric-acid receptor subunit beta-2; GBRB2_HUMAN,
Organism Species:	Rabbit
Clonality:	Polyclonal
React Species:	Human,Mouse,Rat,Chicken,Dog,Pig,Cow,Horse,Rabbit,Sheep,
Applications:	WB=1:500-2000ELISA=1:500-1000IHC-P=1:400-800IHC-F=1:400-800ICC=1:100-500IF=1:100-500 (Paraffin sections need antigen repair) not yet tested in other applications. optimal dilutions/concentrations should be determined by the end user.
Molecular weight:	56kDa
Cellular localization:	cytoplasmicThe cell membrane
Form:	Lyophilized or Liquid
Concentration:	1mg/ml
immunogen:	KLH conjugated synthetic peptide derived from human GABRB2/GABA A Receptor beta 2:251-350/512<Extracellular>
Lsotype:	IgG
Purification:	affinity purified by Protein A
Storage Buffer:	0.01M TBS(pH7.4) with 1% BSA, 0.03% Proclin300 and 50% Glycerol.
Storage:	Store at -20 °C for one year. Avoid repeated freeze/thaw cycles. The lyophilized antibody is stable at room temperature for at least one month and for greater than a year when kept at -20°C. When reconstituted in sterile pH 7.4 0.01M PBS or diluent of antibody the antibody is stable for at least two weeks at 2-4 °C.
PubMed:	PubMed
Product Detail:	The gamma-aminobutyric acid (GABA) A receptor is a multisubunit chloride channel that mediates the fastest inhibitory synaptic transmission in the central nervous system. This gene encodes GABA A receptor, beta 2 subunit. It is mapped to chromosome 5q34

in a cluster comprised of genes encoding alpha 1 and gamma 2 subunits of the GABA A receptor. Alternative splicing of this gene generates 2 transcript variants, differing by a 114 bp insertion. [provided by RefSeq, Jul 2008]

Function:

GABA, the major inhibitory neurotransmitter in the vertebrate brain, mediates neuronal inhibition by binding to the GABA/benzodiazepine receptor and opening an integral chloride channel.

Subunit:

Generally pentameric. There are five types of GABA(A) receptor chains: alpha, beta, gamma, delta, and rho. Binds UBQLN1. Interacts with KCTD8, KCTD12 and KCTD16; this interaction determines the pharmacology and kinetics of the receptor response, the KCTD proteins markedly accelerating the GABA-B response, although to different extents (By similarity).

Subcellular Location:

Cell junction, synapse, postsynaptic cell membrane; Multi-pass membrane protein. Cell membrane; Multi-pass membrane protein.

Tissue Specificity:

Isoform 1 and isoform 2 show reduced expression in schizophrenic brain. Isoform 3 shows increased expression in schizophrenic and bipolar disorder brains while isoform 4 shows reduced expression.

Similarity:

Belongs to the ligand-gated ion channel (TC 1.A.9) family. Gamma-aminobutyric acid receptor (TC 1.A.9.5) subfamily. GABRB2 sub-subfamily.

SWISS:

P47870

Gene ID:

2561

Database links:

[Entrez Gene: 2561](#) Human

[Entrez Gene: 14401](#) Mouse

[Entrez Gene: 25451](#) Rat

[Omim: 600232](#) Human

[SwissProt: P47870](#) Human

[SwissProt: P63137](#) Mouse

[SwissProt: P63138](#) Rat

[Unigene: 303527](#) Human

[Unigene: 338723](#) Mouse

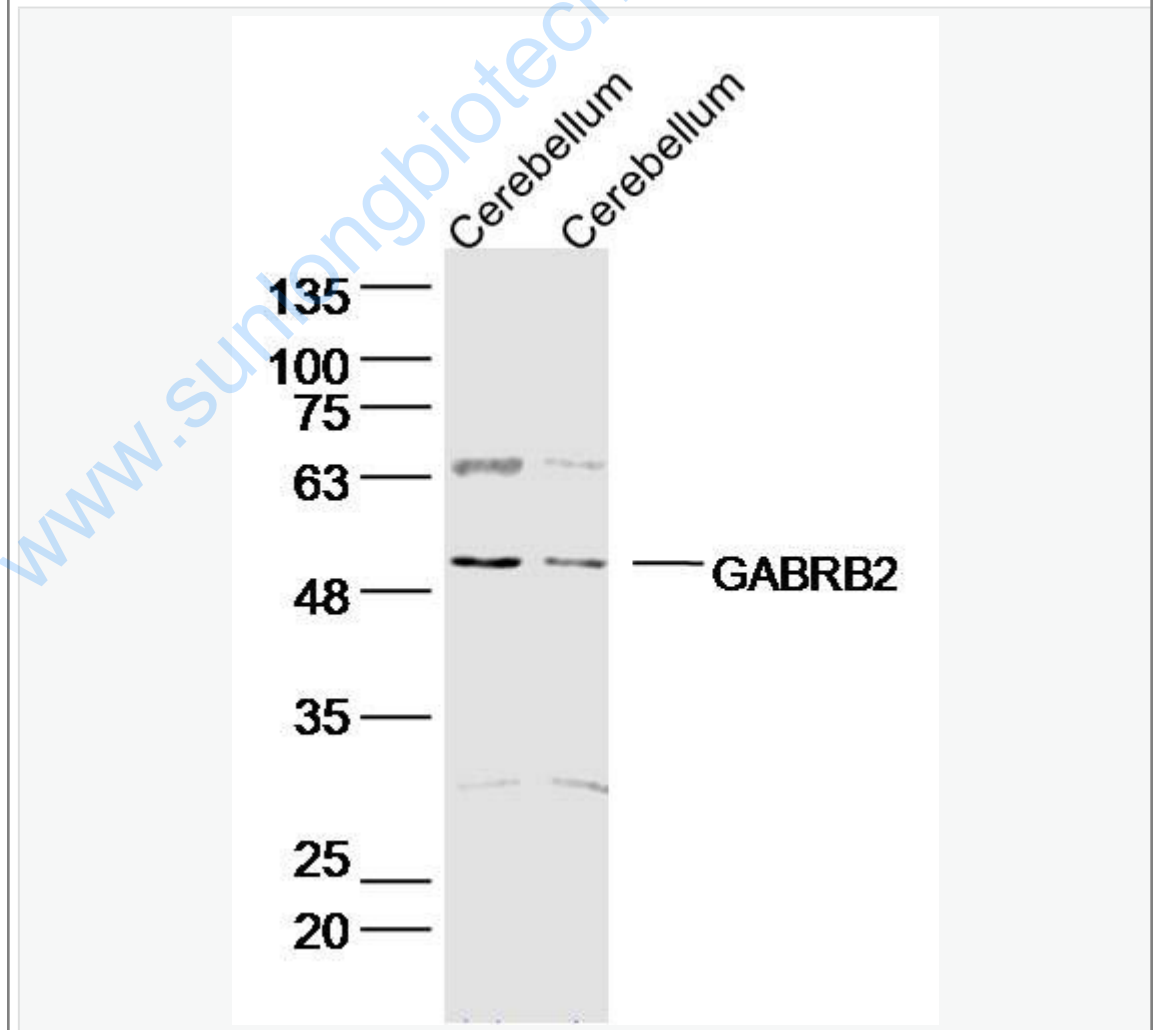
[Unigene: 471870](#) Mouse

[Unigene: 207158](#) Rat

Important Note:

This product as supplied is intended for research use only, not for use in human, therapeutic or diagnostic applications.

Picture:



Sample:

Cerebellum (rat) Lysate at 40 ug

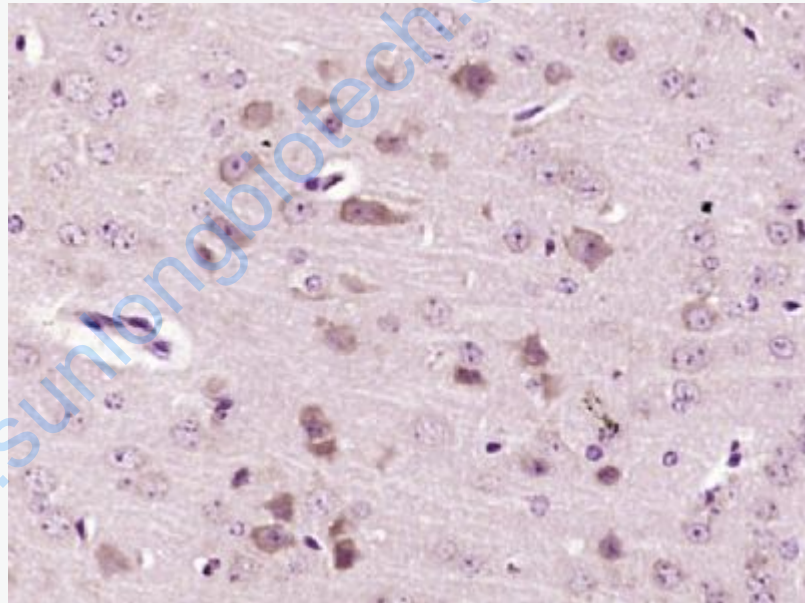
Cerebellum (mouse) Lysate at 40 ug

Primary: Anti- GABRB2 (SL12065R) at 1/300 dilution

Secondary: IRDye800CW Goat Anti-Rabbit IgG at 1/20000 dilution

Predicted band size: 56kD

Observed band size: 56 kD



Paraformaldehyde-fixed, paraffin embedded (Mouse brain); Antigen retrieval by boiling in sodium citrate buffer (pH6.0) for 15min; Block endogenous peroxidase by 3% hydrogen peroxide for 20 minutes; Blocking buffer (normal goat serum) at 37°C for 30min; Antibody incubation with (GABRB2) Polyclonal Antibody, Unconjugated (SL12065R) at 1:400 overnight at 4°C, followed by operating

	according to SP Kit(Rabbit) (sp-0023) instructions and DAB staining.
--	--

www.sunlongbiotech.com