



Rabbit Anti-P2Y6 antibody

SL12075R

Product Name:	P2Y6
Chinese Name:	G蛋白偶联嘌呤受体p2y6抗体
Alias:	G coupled nucleotide receptor; G protein coupled 6; MGC15335; P2 purinoceptor; P2RY6; P2RY6_HUMAN; P2Y purinoceptor 6; P2Y6; P2Y6 receptor; PP2891; Purinergic receptor P2Y6; pyrimidinergic receptor P2Y; Pyrimidinergic receptor P2Y, G protein coupled, 6.
Organism Species:	Rabbit
Clonality:	Polyclonal
React Species:	Human,Mouse,Rat,Dog,Pig,Cow,Sheep,
Applications:	WB=1:500-2000ELISA=1:500-1000 not yet tested in other applications. optimal dilutions/concentrations should be determined by the end user.
Molecular weight:	36kDa
Cellular localization:	The cell membrane
Form:	Lyophilized or Liquid
Concentration:	1mg/ml
immunogen:	KLH conjugated synthetic peptide derived from human P2Y6:201-300//328<Extracellular>
Lsotype:	IgG
Purification:	affinity purified by Protein A
Storage Buffer:	0.01M TBS(pH7.4) with 1% BSA, 0.03% Proclin300 and 50% Glycerol.
Storage:	Store at -20 °C for one year. Avoid repeated freeze/thaw cycles. The lyophilized antibody is stable at room temperature for at least one month and for greater than a year when kept at -20°C. When reconstituted in sterile pH 7.4 0.01M PBS or diluent of antibody the antibody is stable for at least two weeks at 2-4 °C.
PubMed:	PubMed
Product Detail:	Nucleotides are emerging as important extracellular signaling molecules that mediate several effects, such as proliferation, differentiation, chemotaxis and cytokine release. The P2 receptor family is activated by the binding of nucleotides and is divided into two subfamilies, P2X and P2Y. The P2X receptor family is comprised of ligand-gated ion

channels that allow for the increased permeability of calcium into the cell in response to extracellular ATP. The P2Y receptor family are G protein-coupled receptors which mediate the effects of extracellular nucleotides, primarily through the activation of phospholipase C. To some extent, the P2Y receptors can also activate potassium channels or, alternatively, inhibit adenylate cyclase and N-type calcium channels in response to extracellular nucleotides. The P2Y receptors are differentially expressed in several tissue types, such as heart, lung and brain. However, all P2Y receptors are expressed in leukocytes, which suggests a role for the P2Y receptor family in the activation of leukocytes and platelets in response to inflammation or vascular damage.

Function:

Receptor for extracellular UDP > UTP > ATP. The activity of this receptor is mediated by G proteins which activate a phosphatidylinositol-calcium second messenger system.

Subcellular Location:

Cell membrane; Multi-pass membrane protein.

Similarity:

Belongs to the G-protein coupled receptor 1 family.

SWISS:

Q15077

Gene ID:

5031

Database links:

[Entrez Gene: 539703](#)Cow

[Entrez Gene: 485202](#)Dog

[Entrez Gene: 5031](#)Human

[Entrez Gene: 100512849](#)Pig

[Omim: 602451](#)Human

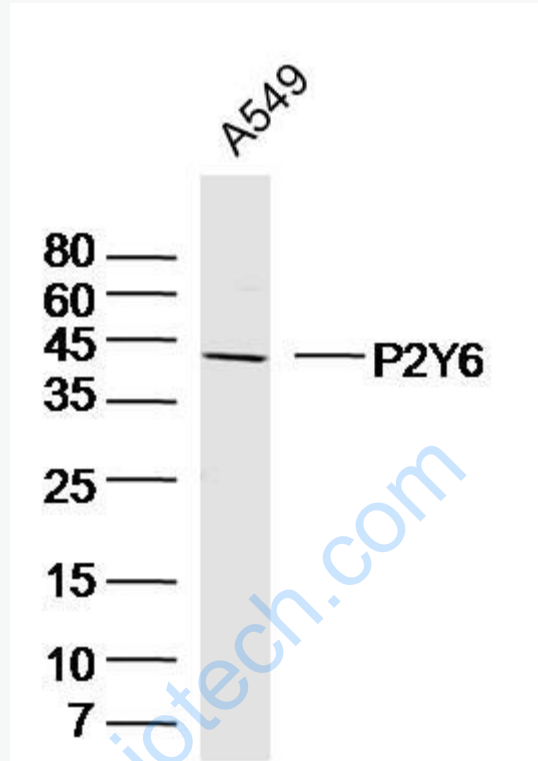
[SwissProt: Q15077](#)Human

[Unigene: 16362](#)Human

Important Note:

This product as supplied is intended for research use only, not for use in human, therapeutic or diagnostic applications.

Picture:



Sample: A549 Cell (Human) Lysate at 40 ug

Primary: Anti-P2Y6 (SL12075R) at 1/300 dilution

Secondary: IRDye800CW Goat Anti-Rabbit IgG at 1/20000 dilution

Predicted band size: 36 kD

Observed band size: 40 kD