



Rabbit Anti-ADAMTS1 antibody

SL1208R

Product Name:	ADAMTS1
Chinese Name:	整合素样金属蛋白酶与凝血酶1型抗体
Alias:	A disintegrin and metalloproteinase with thrombospondin motifs 1; A disintegrin like and metalloprotease with thrombospondin type 1 motif 1; A disintegrin-like and metalloprotease (reprolysin type) with thrombospondin type 1 motif 1; ADAM metalloproteinase with thrombospondin type 1 motif 1; ADAM TS 1; ADAM TS1; ADAMTS 1; ADAMTS; C3 C5; KIAA1346; METH 1; METH1.
Organism Species:	Rabbit
Clonality:	Polyclonal
React Species:	Human,Mouse,Rat,Chicken,Pig,Cow,Horse,Sheep,
Applications:	ELISA=1:500-1000IHC-P=1:400-800IHC-F=1:400-800IF=1:100-500 (Paraffin sections need antigen repair) not yet tested in other applications. optimal dilutions/concentrations should be determined by the end user.
Molecular weight:	106kDa
Cellular localization:	Extracellular matrixSecretory protein
Form:	Lyophilized or Liquid
Concentration:	1mg/ml
immunogen:	KLH conjugated synthetic peptide derived from mouse ADAMTS1:851-967/967
Lsotype:	IgG
Purification:	affinity purified by Protein A
Storage Buffer:	0.01M TBS(pH7.4) with 1% BSA, 0.03% Proclin300 and 50% Glycerol.
Storage:	Store at -20 °C for one year. Avoid repeated freeze/thaw cycles. The lyophilized antibody is stable at room temperature for at least one month and for greater than a year when kept at -20°C. When reconstituted in sterile pH 7.4 0.01M PBS or diluent of antibody the antibody is stable for at least two weeks at 2-4 °C.
PubMed:	PubMed
Product Detail:	ADAMTS1 is a metalloproteinase of the ADAM (A Disintegrin And Metalloproteinase) family containing disintegrin-like domains. ADAMTS1, also known as METH1, was first described as a protein elevated in invasive mouse tumors. Initial findings indicated a

role for ADAMTS1 in tumor progression, since the protein was preferentially expressed in more invasive tumor cell lines. ADAMTS1 is necessary for normal growth, fertility, and organ morphology and function.

Function:

Cleaves aggrecan, a cartilage proteoglycan, and may be involved in its turnover (By similarity). Has angiogenic inhibitor activity. Active metalloprotease, which may be associated with various inflammatory processes as well as development of cancer cachexia. May play a critical role in follicular rupture.

Subcellular Location:

Secreted > extracellular space > extracellular matrix.

Post-translational modifications:

The precursor is cleaved by a furin endopeptidase.

Similarity:

Contains 1 disintegrin domain.

Contains 1 peptidase M12B domain.

Contains 3 TSP type-1 domains.

SWISS:

P97857

Gene ID:

11504

Database links:

[Entrez Gene: 9510](#) Human

[Entrez Gene: 11504](#) Mouse

[Entrez Gene: 79252](#) Rat

[Omim: 605174](#) Human

[SwissProt: Q9UHI8](#) Human

[SwissProt: P97857](#) Mouse

[SwissProt: Q9WUQ1](#) Rat

[Unigene: 643357](#) Human

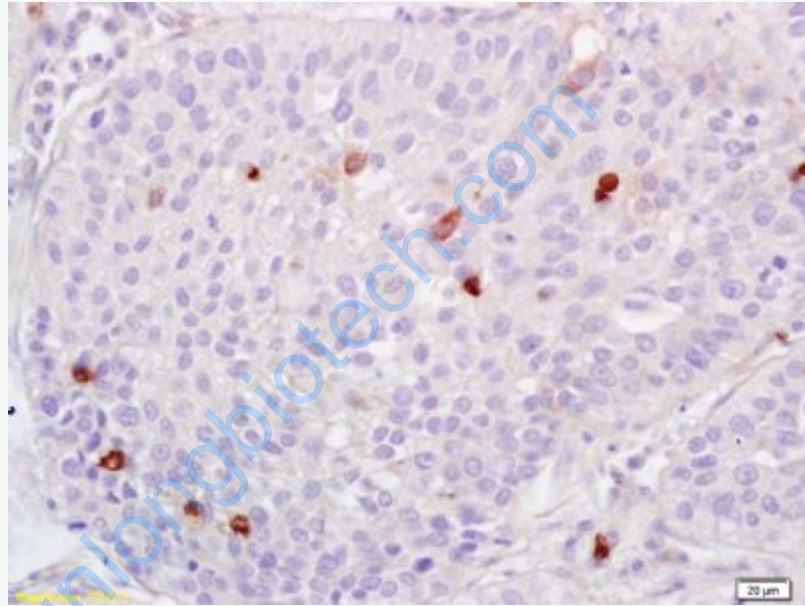
[Unigene: 8230](#) Human

[Unigene: 1421](#) Mouse

[Unigene: 7897](#) Rat

Important Note:

This product as supplied is intended for research use only, not for use in human, therapeutic or diagnostic applications.



Picture:

Tissue/cell: human lung carcinoma; 4% Paraformaldehyde-fixed and paraffin-embedded;

Antigen retrieval: citrate buffer (0.01M, pH 6.0), Boiling bathing for 15min; Block endogenous peroxidase by 3% Hydrogen peroxide for 30min; Blocking buffer (normal goat serum,C-0005) at 37°C for 20 min;

Incubation: Anti-ADAMTS1 Polyclonal Antibody, Unconjugated(SL1208R) 1:200, overnight at 4°C, followed by conjugation to the secondary antibody(SP-0023) and DAB(C-0010) staining