



Rabbit Anti-SLC35C2 antibody

SL12118R

Product Name:	SLC35C2
Chinese Name:	溶质载体蛋白家族35成员C2抗体
Alias:	BA394O2.1; C20orf5; CGI-15; FLJ37039; MGC20633; MGC32079; MGC39183; Ovarian cancer-overexpressed gene 1 protein; OVCOV1; S35C2_HUMAN; SLC35C2; Solute carrier family 35 member C2.
Organism Species:	Rabbit
Clonality:	Polyclonal
React Species:	Human,Mouse,Rat,Chicken,Pig,Cow,Horse,Rabbit,Sheep,
Applications:	WB=1:500-2000ELISA=1:500-1000IHC-P=1:400-800IHC-F=1:400-800ICC=1:100-500IF=1:100-500 (Paraffin sections need antigen repair) not yet tested in other applications. optimal dilutions/concentrations should be determined by the end user.
Molecular weight:	40kDa
Cellular localization:	The cell membrane
Form:	Lyophilized or Liquid
Concentration:	1mg/ml
immunogen:	KLH conjugated synthetic peptide derived from human SLC35C2:81-200/365
Lsotype:	IgG
Purification:	affinity purified by Protein A
Storage Buffer:	0.01M TBS(pH7.4) with 1% BSA, 0.03% Proclin300 and 50% Glycerol.
Storage:	Store at -20 °C for one year. Avoid repeated freeze/thaw cycles. The lyophilized antibody is stable at room temperature for at least one month and for greater than a year when kept at -20°C. When reconstituted in sterile pH 7.4 0.01M PBS or diluent of antibody the antibody is stable for at least two weeks at 2-4 °C.
PubMed:	PubMed
Product Detail:	SLC35C2 (solute carrier family 35, member C2), also known as C20orf5, OVCOV1 or CGI-15, is a 365 amino acid multi-pass membrane protein that belongs to the TPT transporter family and exists as multiple alternatively spliced isoforms. Expressed ubiquitously and functionally induced in hypoxic trophoblast cells, SLC35C2 plays a role in the cellular response to tissue hypoxia and is thought to be involved in the

pathogenesis of ovarian cancer. The gene encoding SLC35C2 maps to human chromosome 20, which houses over 600 genes some of which are associated with Creutzfeldt-Jakob disease, amyotrophic lateral sclerosis, spinal muscular atrophy, ring chromosome 20 epilepsy syndrome and Alagille syndrome. Additionally, chromosome 20 contains a region with numerous genes which are thought important for seminal production and may be potential targets for male contraception.

Function:

May play an important role in the cellular response to tissue hypoxia.

Subcellular Location:

Membrane.

Tissue Specificity:

Ubiquitously expressed although the level of expression is tissue dependent. Overexpressed in ovarian cancer.

Similarity:

Belongs to the TPT transporter family. SLC35C subfamily.

SWISS:

Q9NQQ7

Gene ID:

51006

Database links:

[Entrez Gene: 514485](#)Cow

[Entrez Gene: 609863](#)Dog

[Entrez Gene: 100056733](#)Horse

[Entrez Gene: 51006](#)Human

[Entrez Gene: 228875](#)Mouse

[Entrez Gene: 100152375](#)Pig

[Entrez Gene: 100349356](#)Rabbit

[Entrez Gene: 311637](#)Rat

[Entrez Gene: 323482](#)Zebrafish

[SwissProt: Q9NQQ7](#)Human

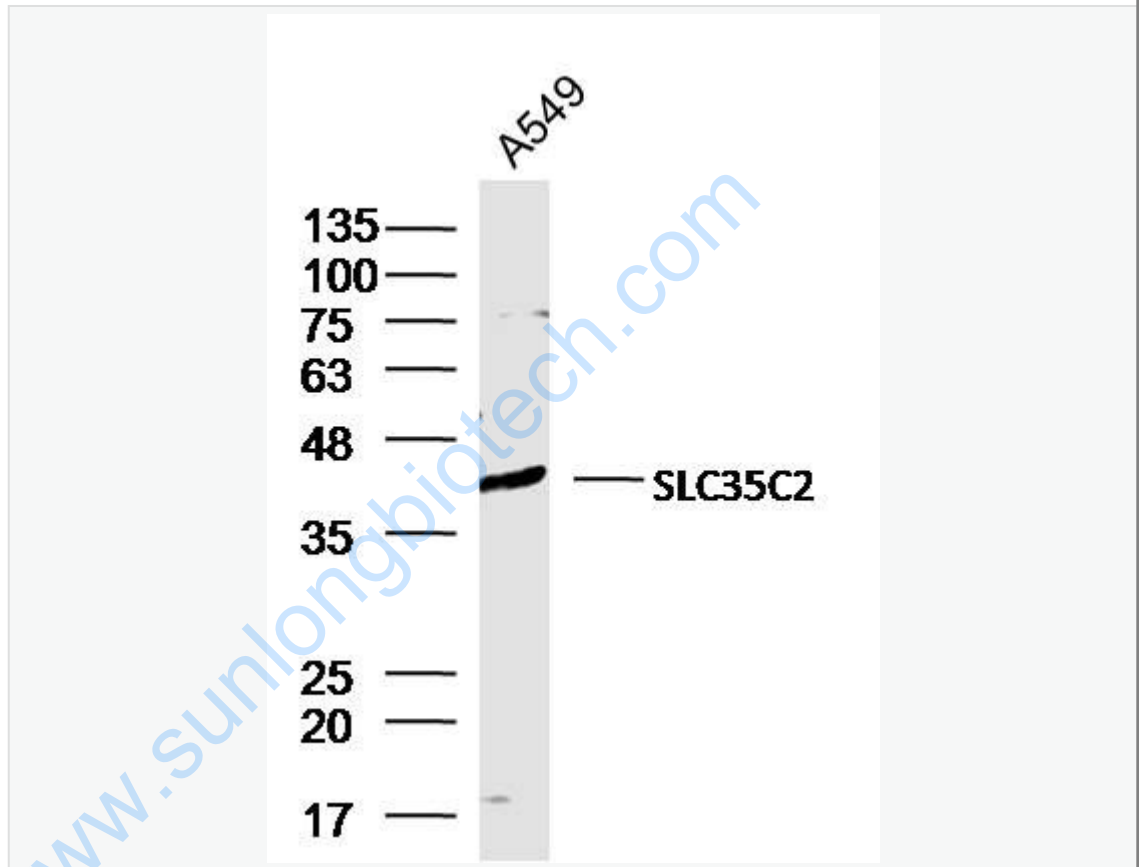
[SwissProt: Q8VCX2](#)Mouse

[Unigene: 593344](#) Human

Important Note:

This product as supplied is intended for research use only, not for use in human, therapeutic or diagnostic applications.

Picture:



Sample:

A549 Cell (Human) Lysate at 30 ug

Primary: Anti-SLC35C2 (SL12118R) at 1/300 dilution

Secondary: IRDye800CW Goat Anti-Rabbit IgG at 1/20000 dilution

Predicted band size: 40 kD

Observed band size: 40 kD