



Rabbit Anti-SCN7A antibody

SL12127R

| | |
|-------------------------------|---|
| Product Name: | SCN7A |
| Chinese Name: | 钠离子Channel protein7 α /Na ⁺ CP type VII α 抗体 |
| Alias: | Putative voltage gated sodium channel subunit alpha Na α ; SCN 6A; SCN 7A; SCN6A; Sodium channel protein cardiac and skeletal muscle subunit alpha; Sodium channel protein type 7 subunit alpha; Sodium channel protein type VII subunit alpha; Sodium channel voltage gated type VI alpha polypeptide; Sodium channel voltage gated type VII alpha; Sodium channel voltage gated type VII alpha polypeptide; Voltage dependent sodium channel alpha subunit; SCN7A HUMAN. |
| Organism Species: | Rabbit |
| Clonality: | Polyclonal |
| React Species: | Human,Mouse,Rat,Pig,Cow,Horse,Sheep, |
| Applications: | ELISA=1:500-1000IHC-P=1:400-800IHC-F=1:400-800ICC=1:100-500IF=1:100-500 (Paraffin sections need antigen repair) not yet tested in other applications. optimal dilutions/concentrations should be determined by the end user. |
| Molecular weight: | 193kDa |
| Cellular localization: | The cell membrane |
| Form: | Lyophilized or Liquid |
| Concentration: | 1mg/ml |
| immunogen: | KLH conjugated synthetic peptide derived from human SCN7A:1561-1582/1682 |
| Lsotype: | IgG |
| Purification: | affinity purified by Protein A |
| Storage Buffer: | 0.01M TBS(pH7.4) with 1% BSA, 0.03% Proclin300 and 50% Glycerol. |
| Storage: | Store at -20 $^{\circ}$ C for one year. Avoid repeated freeze/thaw cycles. The lyophilized antibody is stable at room temperature for at least one month and for greater than a year when kept at -20 $^{\circ}$ C. When reconstituted in sterile pH 7.4 0.01M PBS or diluent of antibody the antibody is stable for at least two weeks at 2-4 $^{\circ}$ C. |
| PubMed: | PubMed |
| Product Detail: | Voltage-gated sodium channels are selective ion channels that regulate the permeability |

of sodium ions in excitable cells. During the propagation of an action potential, sodium channels allow an influx of sodium ions, which rapidly depolarize the cell. The three glycoproteins that comprise the voltage-gated sodium channel proteins include a pore-forming Beta subunit, a noncovalently associated Beta 1 subunit and a disulfide-linked Beta 2 subunit. Na⁺ CP type VII Alpha (Sodium channel protein type 7 subunit alpha), also known as SCN6A, Sodium channel protein cardiac and skeletal muscle subunit alpha and putative voltage-gated sodium channel subunit alpha Nax, is a 1682 amino acid multi-pass membrane protein that belongs to the sodium channel family. Primarily expressed in uterus and heart, Na⁺ CP type VII Alpha may function in the regulation of salt intake behavior and central sensing of body-fluid sodium levels.

Function:

Voltage dependent sodium channels mediate the sodium ion permeability of excitable membranes. Assuming opened or closed conformations in response to the voltage difference across the membrane, they form a sodium selective channel through which Na(+) ions may pass in accordance with their electrochemical gradient. These ion channel proteins exist as heteromultimeric complexes of a large alpha subunit and 1 or 2 smaller beta subunits. SCN7A (Sodium channel protein type 7 subunit alpha) is an alpha subunit and is expressed in heart and uterus.

Subcellular Location:

Membrane; Multipass membrane protein.

Tissue Specificity:

Heart and uterus.

Similarity:

Belongs to the sodium channel (TC 1.A.1.10) family. SCN7A subfamily.

SWISS:

Q01118

Gene ID:

6332

Database links:

[Entrez Gene: 6332](#)Human

[Entrez Gene: 20272](#)Mouse

[Entrez Gene: 64155](#)Rat

[Oimim: 182392](#)Human

[SwissProt: Q01118](#)Human

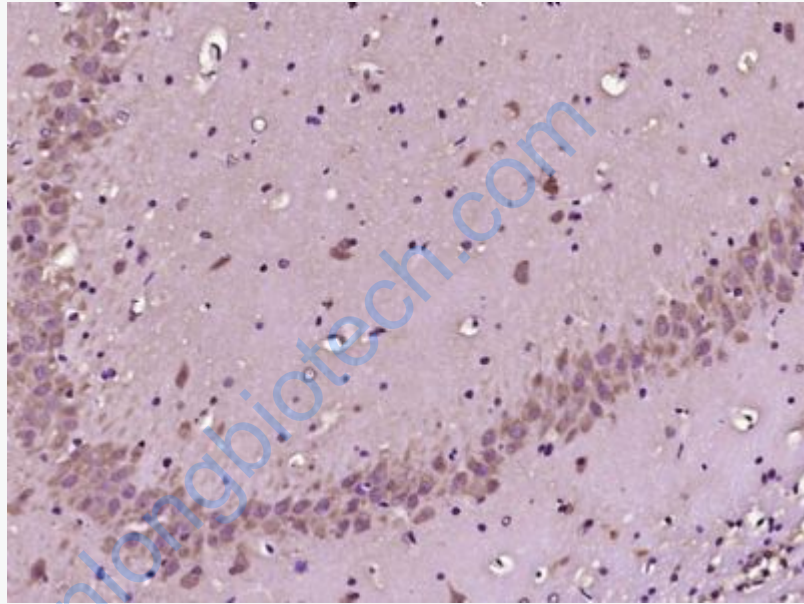
[SwissProt: Q62467](#)Mouse

[SwissProt: P97706](#)Rat

[Unigene: 695947](#)Human

Important Note:

This product as supplied is intended for research use only, not for use in human, therapeutic or diagnostic applications.



Picture:

Paraformaldehyde-fixed, paraffin embedded (Rat brain); Antigen retrieval by boiling in sodium citrate buffer (pH6.0) for 15min; Block endogenous peroxidase by 3% hydrogen peroxide for 20 minutes; Blocking buffer (normal goat serum) at 37°C for 30min; Antibody incubation with (SCN7A) Polyclonal Antibody, Unconjugated (SL12127R) at 1:400 overnight at 4°C, followed by operating according to SP Kit(Rabbit) (sp-0023) instructions and DAB staining.