



## Rabbit Anti-DLGAP4 antibody

SL12140R

<b>Product Name:</b>	DLGAP4
<b>Chinese Name:</b>	PSD95Binding protein4抗体
<b>Alias:</b>	DLGAP4; DAP 4; DAP-4; DAP4; Discs, large (Drosophila) homolog associated protein 4; Disks large associated protein 4; Disks large-associated protein 4; DLGAP4; DLGP4_HUMAN; DLP4; PSD 95/SAP90 binding protein 4; PSD-95/SAP90-binding protein 4; RP5-977B1.6; SAP90/PSD-95-associated protein 4; SAPAP 4; SAPAP-4; SAPAP4.
<b>Organism Species:</b>	Rabbit
<b>Clonality:</b>	Polyclonal
<b>React Species:</b>	Human,Mouse,Rat,Dog,Pig,Cow,Horse,Rabbit,Sheep,Guinea Pig,
<b>Applications:</b>	WB=1:500-2000ELISA=1:500-1000IHC-P=1:400-800IHC-F=1:400-800ICC=1:100-500IF=1:100-500 (Paraffin sections need antigen repair) not yet tested in other applications. optimal dilutions/concentrations should be determined by the end user.
<b>Molecular weight:</b>	108kDa
<b>Cellular localization:</b>	The cell membrane
<b>Form:</b>	Lyophilized or Liquid
<b>Concentration:</b>	1mg/ml
<b>immunogen:</b>	KLH conjugated synthetic peptide derived from human SAPAP4/DLGAP4:261-370/992
<b>Lsotype:</b>	IgG
<b>Purification:</b>	affinity purified by Protein A
<b>Storage Buffer:</b>	0.01M TBS(pH7.4) with 1% BSA, 0.03% Proclin300 and 50% Glycerol.
<b>Storage:</b>	Store at -20 °C for one year. Avoid repeated freeze/thaw cycles. The lyophilized antibody is stable at room temperature for at least one month and for greater than a year when kept at -20°C. When reconstituted in sterile pH 7.4 0.01M PBS or diluent of antibody the antibody is stable for at least two weeks at 2-4 °C.
<b>PubMed:</b>	<a href="#">PubMed</a>
<b>Product Detail:</b>	A guanylate kinase is a phosphotransferase that produces ADP and GDP from the substrates ATP and GMP. SAPAP4 is a 992 amino acid protein that likely localizes to the postsynaptic membrane of neurons to enhance neuronal signaling. SAPAP4 could

act as a signaling molecule which interacts with the human genes DLG1 and DLG4/PSD-95. The gene encoding SAPAP4, DLGAP4, maps to human chromosome 20. Comprising approximately 2% of the human genome, chromosome 20 contains nearly 63 million bases that encode over 600 genes, some of which are associated with Creutzfeldt-Jakob disease, amyotrophic lateral sclerosis, spinal muscular atrophy, ring chromosome 20 epilepsy syndrome and Alagille syndrome. Additionally, chromosome 20 contains a region with numerous genes which are thought important for seminal production and may be potential targets for male contraception.

**Function:**

May play a role in the molecular organization of synapses and neuronal cell signaling. Could be an adapter protein linking ion channel to the subsynaptic cytoskeleton. May induce enrichment of PSD-95/SAP90 at the plasma membrane.

**Subunit:**

Interacts with DLG1 and DLG4/PSD-95 (By similarity).

**Subcellular Location:**

Membrane; Peripheral membrane protein (By similarity).

**Similarity:**

Belongs to the SAPAP family.

**SWISS:**

Q9Y2H0

**Gene ID:**

22839

**Database links:**

[Entrez Gene: 22839](#) Human

[Entrez Gene: 228836](#) Mouse

[Entrez Gene: 286930](#) Rat

[SwissProt: Q9Y2H0](#) Human

[SwissProt: B1AZP2](#) Mouse

[SwissProt: P97839](#) Rat

[Unigene: 249600](#) Human

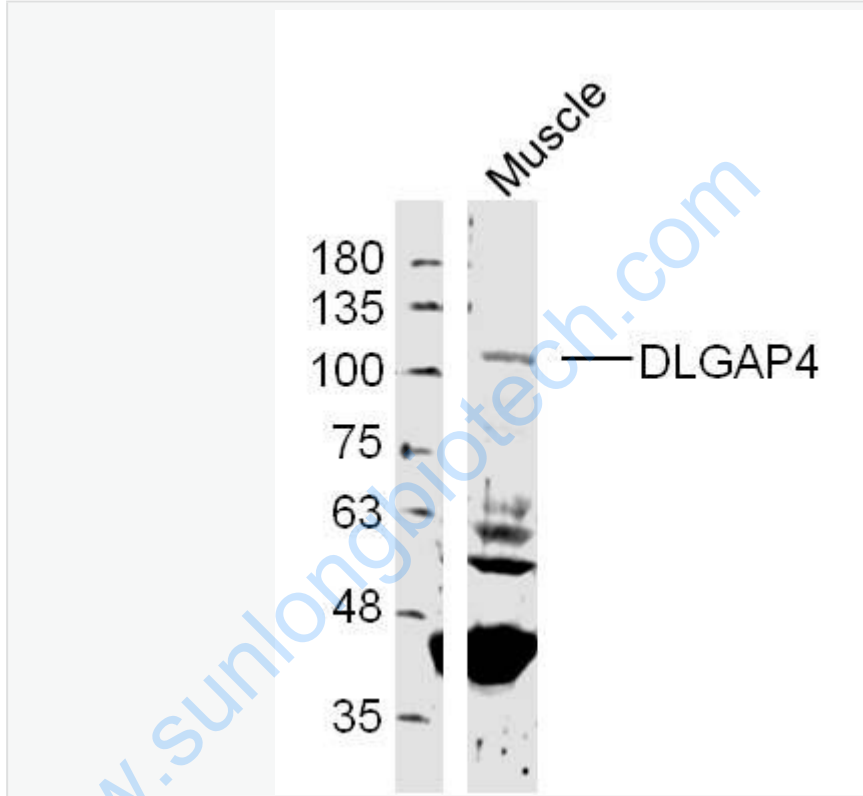
[Unigene: 22094](#) Mouse

[Unigene: 11279](#) Rat

**Important Note:**

This product as supplied is intended for research use only, not for use in human, therapeutic or diagnostic applications.

**Picture:**



Sample:

Muscle (Mouse) Lysate at 40 ug

Primary: Anti- DLGAP4(SL12140R)at 1/300 dilution

Secondary: IRDye800CW Goat Anti-Rabbit IgG at 1/20000 dilution

Predicted band size: 108 kD

Observed band size: 108 kD