



## Rabbit Anti-LPPR1 antibody

SL12150R

<b>Product Name:</b>	LPPR1
<b>Chinese Name:</b>	脂质磷酸磷酸酶相关蛋白1/可塑性相关基因3抗体
<b>Alias:</b>	plasticity related gene 3; lipid phosphate phosphatase related protein type 1; LPPR1; MGC26189; plasticity related gene 3 protein; PRG 3; PRG-3; PRG3; RP11-35N6.1; LPPR1_HUMAN; Lipid phosphate phosphatase-related protein type 1; Plasticity-related gene 3 protein.
<b>Organism Species:</b>	Rabbit
<b>Clonality:</b>	Polyclonal
<b>React Species:</b>	Human,Mouse,Rat,Dog,Pig,Cow,Horse,Rabbit,Sheep,
<b>Applications:</b>	ELISA=1:500-1000IHC-P=1:400-800IHC-F=1:400-800ICC=1:100-500IF=1:100-500 (Paraffin sections need antigen repair) not yet tested in other applications. optimal dilutions/concentrations should be determined by the end user.
<b>Molecular weight:</b>	36kDa
<b>Cellular localization:</b>	The cell membrane
<b>Form:</b>	Lyophilized or Liquid
<b>Concentration:</b>	1mg/ml
<b>immunogen:</b>	KLH conjugated synthetic peptide derived from human LPPR1:181-280/325
<b>Lsotype:</b>	IgG
<b>Purification:</b>	affinity purified by Protein A
<b>Storage Buffer:</b>	0.01M TBS(pH7.4) with 1% BSA, 0.03% Proclin300 and 50% Glycerol.
<b>Storage:</b>	Store at -20 °C for one year. Avoid repeated freeze/thaw cycles. The lyophilized antibody is stable at room temperature for at least one month and for greater than a year when kept at -20°C. When reconstituted in sterile pH 7.4 0.01M PBS or diluent of antibody the antibody is stable for at least two weeks at 2-4 °C.
<b>PubMed:</b>	<a href="#">PubMed</a>
<b>Product Detail:</b>	This gene encodes a member of the plasticity-related gene (PRG) family. Members of the PRG family mediate lipid phosphate phosphatase activity in neurons and are known to be involved in neuronal plasticity. The protein encoded by this gene does not perform its function through enzymatic phospholipid degradation. This gene is strongly

expressed in brain. It shows dynamic expression regulation during brain development and neuronal excitation. Alternatively spliced transcript variants encoding the same protein have been observed. [provided by RefSeq, Jul 2008].

**Subcellular Location:**

Membrane; Multipass membrane protein

**Similarity:**

Belongs to the PA-phosphatase related phosphoesterase family.

**SWISS:**

Q8TBJ4

**Gene ID:**

54886

**Database links:**

[Entrez Gene: 54886](#) Human

[Entrez Gene: 272031](#) Mouse

[Entrez Gene: 298062](#) Rat

[SwissProt: Q8TBJ4](#) Human

[SwissProt: Q8BFZ2](#) Mouse

[SwissProt: Q6WAY2](#) Rat

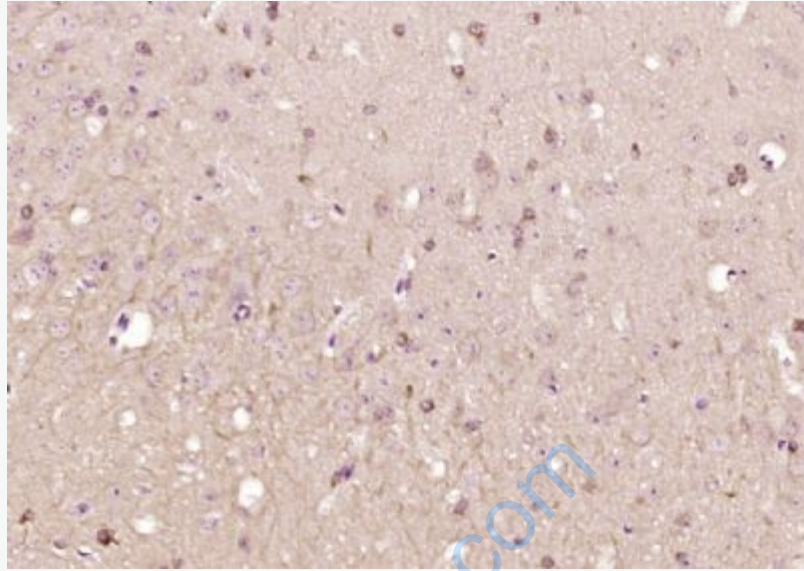
[Unigene: 382683](#) Human

[Unigene: 299460](#) Mouse

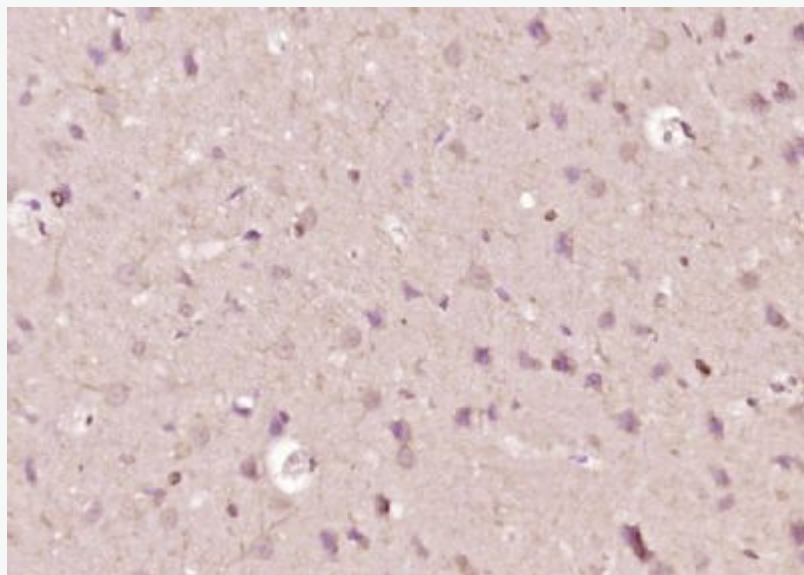
[Unigene: 215023](#) Rat

**Important Note:**

This product as supplied is intended for research use only, not for use in human, therapeutic or diagnostic applications.



Paraformaldehyde-fixed, paraffin embedded (mouse brain); Antigen retrieval by boiling in sodium citrate buffer (pH6.0) for 15min; Block endogenous peroxidase by 3% hydrogen peroxide for 20 minutes; Blocking buffer (normal goat serum) at 37°C for 30min; Antibody incubation with (LPPR1) Polyclonal Antibody, Unconjugated (SL12150R) at 1:200 overnight at 4°C, followed by operating according to SP Kit(Rabbit) (sp-0023) instructions and DAB staining.



**Picture:**

Paraformaldehyde-fixed, paraffin embedded (rat brain); Antigen retrieval by boiling in sodium citrate buffer (pH6.0) for 15min; Block endogenous peroxidase by 3% hydrogen peroxide for 20 minutes; Blocking buffer (normal goat serum) at 37°C for 30min; Antibody incubation with (LPPR1) Polyclonal Antibody, Unconjugated (SL12150R) at 1:200 overnight at 4°C, followed by operating according to SP Kit(Rabbit) (sp-0023) instructions and DAB staining.

[www.sunlongbiotech.com](http://www.sunlongbiotech.com)