



Rabbit Anti-Calcyphosine 1 antibody

SL12161R

Product Name:	Calcyphosine 1
Chinese Name:	钙磷蛋白1抗体
Alias:	Calcyphosin; Calcyphosine 1; Calcyphosine; CAPS; CAPS1; CAYP1_HUMAN; Thyroid protein p24.
Organism Species:	Rabbit
Clonality:	Polyclonal
React Species:	Human,Dog,Pig,Cow,Rabbit,Sheep,
Applications:	WB=1:500-2000ELISA=1:500-1000IHC-P=1:400-800IHC-F=1:400-800ICC=1:100-500IF=1:100-500 (Paraffin sections need antigen repair) not yet tested in other applications. optimal dilutions/concentrations should be determined by the end user.
Molecular weight:	21kDa
Cellular localization:	cytoplasmic
Form:	Lyophilized or Liquid
Concentration:	1mg/ml
immunogen:	KLH conjugated synthetic peptide derived from human Calcyphosine 1:101-189/189
Lsotype:	IgG
Purification:	affinity purified by Protein A
Storage Buffer:	0.01M TBS(pH7.4) with 1% BSA, 0.03% Proclin300 and 50% Glycerol.
Storage:	Store at -20 °C for one year. Avoid repeated freeze/thaw cycles. The lyophilized antibody is stable at room temperature for at least one month and for greater than a year when kept at -20°C. When reconstituted in sterile pH 7.4 0.01M PBS or diluent of antibody the antibody is stable for at least two weeks at 2-4 °C.
PubMed:	PubMed
Product Detail:	CAPS1 is a 189 amino acid cytoplasmic protein that contains four EF-hand domains, which serve as calcium-binding sites, and was first identified in canine thyroid. Interestingly, CAPS1 is much less abundant in humans than in canines. Synthesis and phosphorylation of CAPS1 is upregulated by cAMP-agonists in thyrocytes. CAPS1 likely functions in the regulation of ionic transport and may be involved in cross-signaling between cAMP and Ca(+2)-phopphatidylinositol cascades. In addition to

thyroid, CAPS1 is expressed in brain, salivary glands and lung. Expression of CAPS1 is increased in endometrial cancer and prognosis seems to be dependent on the level of CAPS1 expression, indicating that CAPS1 may be an appropriate prognostic marker for patient survival.

Function:

Calcium-binding protein. May play a role in cellular signaling events.

Subunit:

Monomer. Does not form oligomers in the presence of calcium.

Subcellular Location:

Cytoplasm.

Similarity:

Contains 4 EF-hand domains.

SWISS:

Q13938

Gene ID:

828

Database links:

[Entrez Gene: 828](#) Human

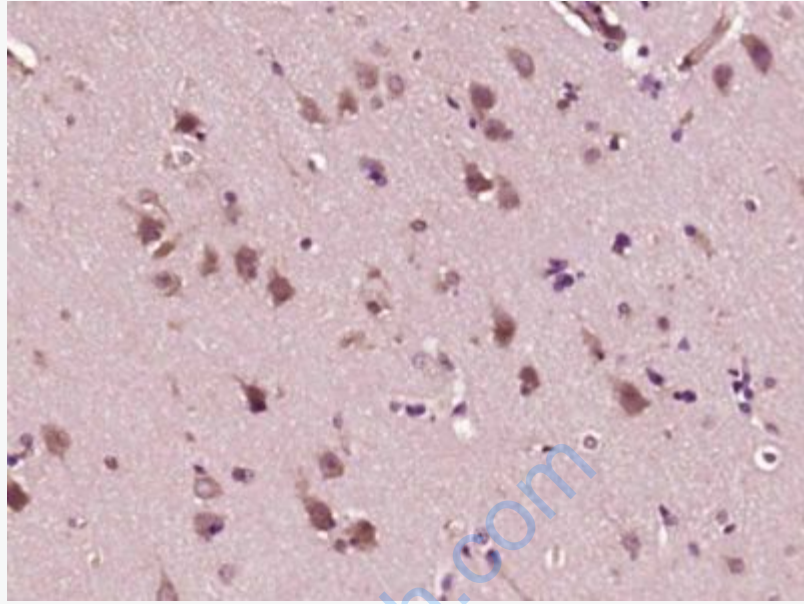
[Omid: 114212](#) Human

[SwissProt: Q13938](#) Human

[Unigene: 584744](#) Human

Important Note:

This product as supplied is intended for research use only, not for use in human, therapeutic or diagnostic applications.



Picture:

Paraformaldehyde-fixed, paraffin embedded (Human brain glioma); Antigen retrieval by boiling in sodium citrate buffer (pH6.0) for 15min; Block endogenous peroxidase by 3% hydrogen peroxide for 20 minutes; Blocking buffer (normal goat serum) at 37°C for 30min; Antibody incubation with (Calcyphosine 1) Polyclonal Antibody, Unconjugated (SL12161R) at 1:400 overnight at 4°C, followed by operating according to SP Kit(Rabbit) (sp-0023) instructions and DAB staining.