



Rabbit Anti-KCNF1 antibody

SL12173R

Product Name:	KCNF1
Chinese Name:	电压门控性钾Channel protein亚基kv5.1抗体
Alias:	IK 8; IK8; KCNF 1; KCNF; Kcnf1; KCNF1_HUMAN; kH 1; kH1; KV5.1; Potassium voltage-gated channel subfamily F member 1; MGC33316; Potassium channel KH1; Potassium channel Kv5.1; Potassium voltage gated channel subfamily F member 1; Potassium voltage-gated channel subfamily F member 1; Voltage gated potassium channel subunit Kv5.1; Voltage-gated potassium channel subunit Kv5.1.
Organism Species:	Rabbit
Clonality:	Polyclonal
React Species:	Human,Mouse,Rat,Chicken,Dog,Pig,Cow,Horse,Rabbit,Sheep,Guinea Pig,
Applications:	WB=1:500-2000ELISA=1:500-1000IHC-P=1:400-800IHC-F=1:400-800ICC=1:100-500IF=1:100-500 (Paraffin sections need antigen repair) not yet tested in other applications. optimal dilutions/concentrations should be determined by the end user.
Molecular weight:	56kDa
Cellular localization:	The cell membrane
Form:	Lyophilized or Liquid
Concentration:	1mg/ml
immunogen:	KLH conjugated synthetic peptide derived from human KCNF1:161-260/494<Extracellular>
Lsotype:	IgG
Purification:	affinity purified by Protein A
Storage Buffer:	0.01M TBS(pH7.4) with 1% BSA, 0.03% Proclin300 and 50% Glycerol.
Storage:	Store at -20 °C for one year. Avoid repeated freeze/thaw cycles. The lyophilized antibody is stable at room temperature for at least one month and for greater than a year when kept at -20°C. When reconstituted in sterile pH 7.4 0.01M PBS or diluent of antibody the antibody is stable for at least two weeks at 2-4 °C.
PubMed:	PubMed
Product Detail:	KCNF1 is a multi-pass membrane-bound protein that acts as an ion channel and is generally expressed as a heterotetramer of potassium channeling proteins. Formerly

known as kH1, KCNF1 is usually found as a heteromer with three other potassium channel proteins, KCNG3, KV6.3 and KCNV2. As a potassium channel protein, KCNF1 plays a role in regulating apoptosis and proliferation of pulmonary artery smooth muscle (PASM) cells. Bone morphogenetic proteins (BMPs) restrict proliferation and can induce apoptosis in normal human PASM cells and will upregulate expression of KCNF1 in PASM cells in vitro. KCNF1 is expressed in heart, brain, liver, skeletal muscle, kidney and pancreas.

Function:

Putative voltage-gated potassium channel.

Subunit:

Heteromultimer with KCNG3, KCNG4 and KCNV2. Interacts with DLG1.

Subcellular Location:

Membrane.

Tissue Specificity:

Detected in heart, brain, liver, skeletal muscle, kidney and pancreas.

Similarity:

Belongs to the potassium channel family.

F (TC 1.A.1.2) subfamily. Kv5.1/KCNF1 sub-subfamily.

SWISS:

Q9H3M0

Gene ID:

3754

Database links:

[Entrez Gene: 3754](#)Human

[Entrez Gene: 382571](#)Mouse

[Omim: 603787](#)Human

[SwissProt: Q9H3M0](#)Human

[SwissProt: Q7TSH7](#)Mouse

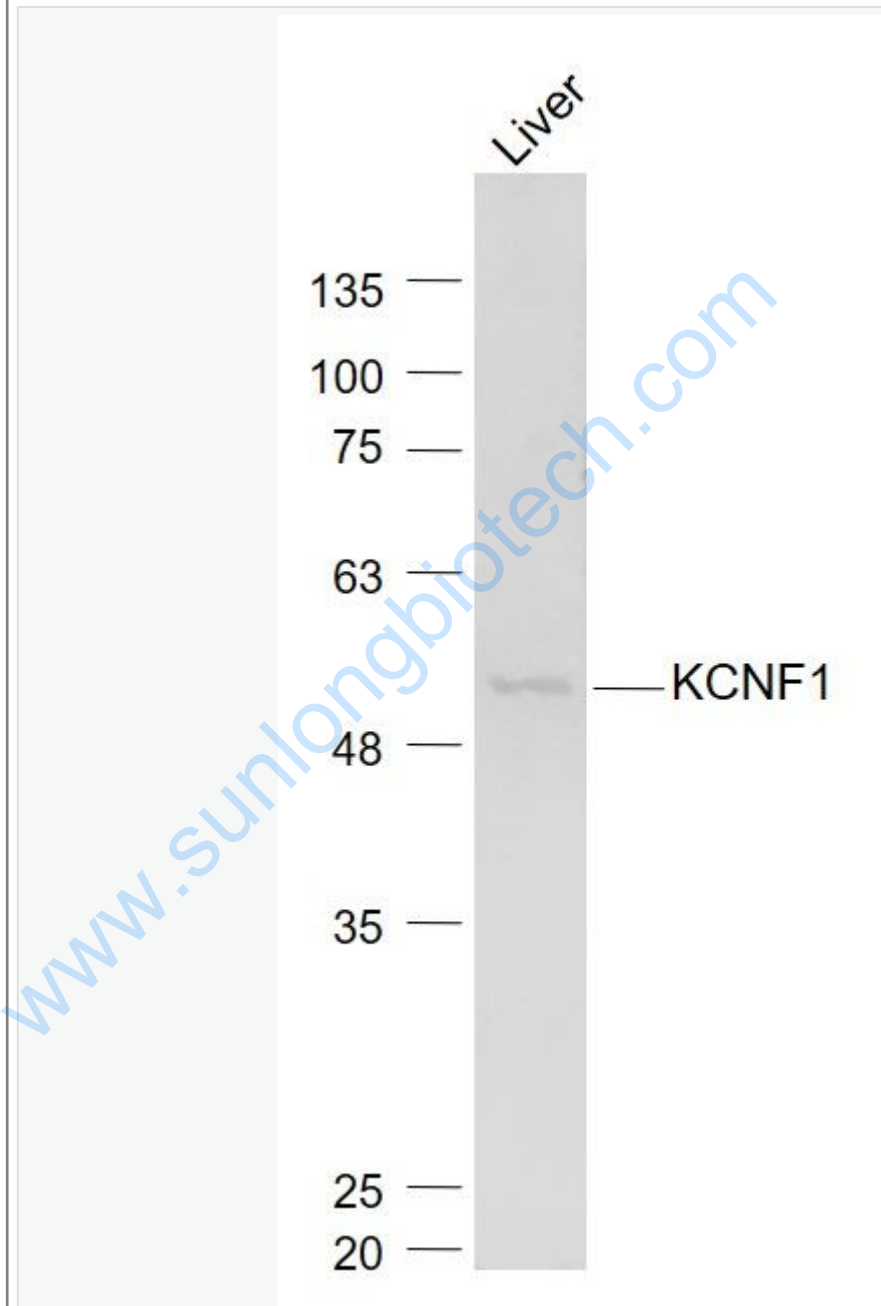
[Unigene: 23735](#)Human

[Unigene: 40173](#)Mouse

Important Note:

This product as supplied is intended for research use only, not for use in human, therapeutic or diagnostic applications.

Picture:



Sample:

Liver (Mouse) Lysate at 40 ug

Primary: Anti- KCNF1 (SL12173R) at 1/1000 dilution

Secondary: IRDye800CW Goat Anti-Rabbit IgG at 1/20000 dilution

Predicted band size: 56 kD

Observed band size: 56 kD

www.sunlongbiotech.com