



## Rabbit Anti-ZFP36L1 antibody

SL12254R

<b>Product Name:</b>	ZFP36L1
<b>Chinese Name:</b>	丁酸盐反应因子1抗体
<b>Alias:</b>	ERF1; Berg36; BRF1; Butyrate response factor 1; C3H1 type-like 1; cMG1; Early response factor Berg36; EGF response factor 1; EGF-response factor 1; ERF 1; ERF-1; ERF1; Protein TIS11B; RNF162B; TIS11B; TISB_HUMAN; ZFP36L1; Zinc finger protein 36; Zinc finger protein 36 C3H type like 1; zinc finger protein C3H type 36 like 1.
<b>Organism Species:</b>	Rabbit
<b>Clonality:</b>	Polyclonal
<b>React Species:</b>	Human,Mouse,Rat,Dog,Pig,Cow,Horse,
<b>Applications:</b>	ELISA=1:500-1000IHC-P=1:400-800IHC-F=1:400-800ICC=1:100-500IF=1:100-500 (Paraffin sections need antigen repair) not yet tested in other applications. optimal dilutions/concentrations should be determined by the end user.
<b>Molecular weight:</b>	36kDa
<b>Cellular localization:</b>	The nucleus
<b>Form:</b>	Lyophilized or Liquid
<b>Concentration:</b>	1mg/ml
<b>immunogen:</b>	KLH conjugated synthetic peptide derived from human ZFP36L1/ERF1:101-200/338
<b>Lsotype:</b>	IgG
<b>Purification:</b>	affinity purified by Protein A
<b>Storage Buffer:</b>	0.01M TBS(pH7.4) with 1% BSA, 0.03% Proclin300 and 50% Glycerol.
<b>Storage:</b>	Store at -20 °C for one year. Avoid repeated freeze/thaw cycles. The lyophilized antibody is stable at room temperature for at least one month and for greater than a year when kept at -20°C. When reconstituted in sterile pH 7.4 0.01M PBS or diluent of antibody the antibody is stable for at least two weeks at 2-4 °C.
<b>PubMed:</b>	<a href="#">PubMed</a>
<b>Product Detail:</b>	This gene encodes a member of the plakin protein family of adhesion junction plaque proteins. Multiple alternatively spliced transcript variants encoding distinct isoforms have been found for this gene, but the full-length nature of some variants has not been

defined. It has been reported that some isoforms are expressed in neural and muscle tissue, anchoring neural intermediate filaments to the actin cytoskeleton, and some isoforms are expressed in epithelial tissue, anchoring keratin-containing intermediate filaments to hemidesmosomes. Consistent with the expression, mice defective for this gene show skin blistering and neurodegeneration. [provided by RefSeq, Mar 2010]

**Function:**

Probable regulatory protein involved in regulating the response to growth factors.

**Subcellular Location:**

Nucleus.

**Similarity:**

Contains 2 C3H1-type zinc fingers.

**SWISS:**

Q07352

**Gene ID:**

667

**Database links:**

[Entrez Gene: 400223](#) Human

[Entrez Gene: 677](#) Human

[Entrez Gene: 12192](#) Mouse

[Entrez Gene: 29344](#) Rat

[Omim: 601064](#) Human

[SwissProt: Q07352](#) Human

[SwissProt: P23950](#) Mouse

[SwissProt: P17431](#) Rat

[Unigene: 707091](#) Human

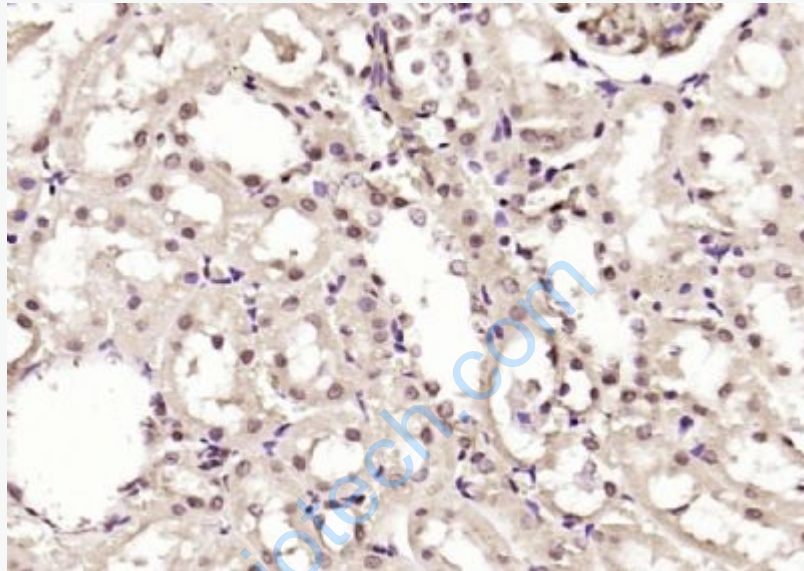
[Unigene: 85155](#) Human

[Unigene: 235132](#) Mouse

[Unigene: 6142](#) Rat

**Important Note:**

This product as supplied is intended for research use only, not for use in human, therapeutic or diagnostic applications.



**Picture:**

Paraformaldehyde-fixed, paraffin embedded (rat kidney); Antigen retrieval by boiling in sodium citrate buffer (pH6.0) for 15min; Block endogenous peroxidase by 3% hydrogen peroxide for 20 minutes; Blocking buffer (normal goat serum) at 37°C for 30min; Antibody incubation with (ZFP36L1) Polyclonal Antibody, Unconjugated (SL12254R) at 1:200 overnight at 4°C, followed by operating according to SP Kit(Rabbit) (sp-0023) instructions and DAB staining.