



Rabbit Anti-FUT2 antibody

SL12258R

Product Name:	FUT2
Chinese Name:	岩藻糖转移酶2抗体
Alias:	Fucosyltransferase 2; Se; SE2; SEC2; Secretor factor;FUT2_HUMAN.
Organism Species:	Rabbit
Clonality:	Polyclonal
React Species:	Human,Mouse,Rat,Pig,Cow,Horse,Rabbit,Sheep,
Applications:	WB=1:500-2000ELISA=1:500-1000IHC-P=1:400-800IHC-F=1:400-800ICC=1:100-500IF=1:100-500 (Paraffin sections need antigen repair) not yet tested in other applications. optimal dilutions/concentrations should be determined by the end user.
Molecular weight:	39kDa
Cellular localization:	cytoplasmicThe cell membrane
Form:	Lyophilized or Liquid
Concentration:	1mg/ml
immunogen:	KLH conjugated synthetic peptide derived from Human FUT2:231-343/343
Lsotype:	IgG
Purification:	affinity purified by Protein A
Storage Buffer:	0.01M TBS(pH7.4) with 1% BSA, 0.03% Proclin300 and 50% Glycerol.
Storage:	Store at -20 °C for one year. Avoid repeated freeze/thaw cycles. The lyophilized antibody is stable at room temperature for at least one month and for greater than a year when kept at -20°C. When reconstituted in sterile pH 7.4 0.01M PBS or diluent of antibody the antibody is stable for at least two weeks at 2-4 °C.
PubMed:	PubMed
Product Detail:	Creates a soluble precursor oligosaccharide FuC-alpha ((1,2)Galbeta-) called the H antigen which is an essential substrate for the final step in the soluble A and B antigen synthesis pathway. H and Se enzymes fucosylate the same acceptor substrates but exhibit different Km values. FUT2 is expressed on the surface of several human tumor cell lines such as BEL-7404, SPC-A-1, and SGC-7901.
	Function:

Creates a soluble precursor oligosaccharide FuC-alpha ((1,2)Galbeta-) called the H antigen which is an essential substrate for the final step in the soluble A and B antigen synthesis pathway. H and Se enzymes fucosylate the same acceptor substrates but exhibit different Km values.

Subcellular Location:

Golgi apparatus, Golgi stack membrane; Single-pass type II membrane protein.
Note=Membrane-bound form in trans cisternae of Golgi.

Tissue Specificity:

Small intestine, colon and lung.

Similarity:

Belongs to the glycosyltransferase 11 family.

SWISS:

Q10981

Gene ID:

2524

Database links:

[Entrez Gene: 2524](#)Human

[Entrez Gene: 14344](#)Mouse

[Omim: 182100](#)Human

[SwissProt: Q10981](#)Human

[SwissProt: Q9JL27](#)Mouse

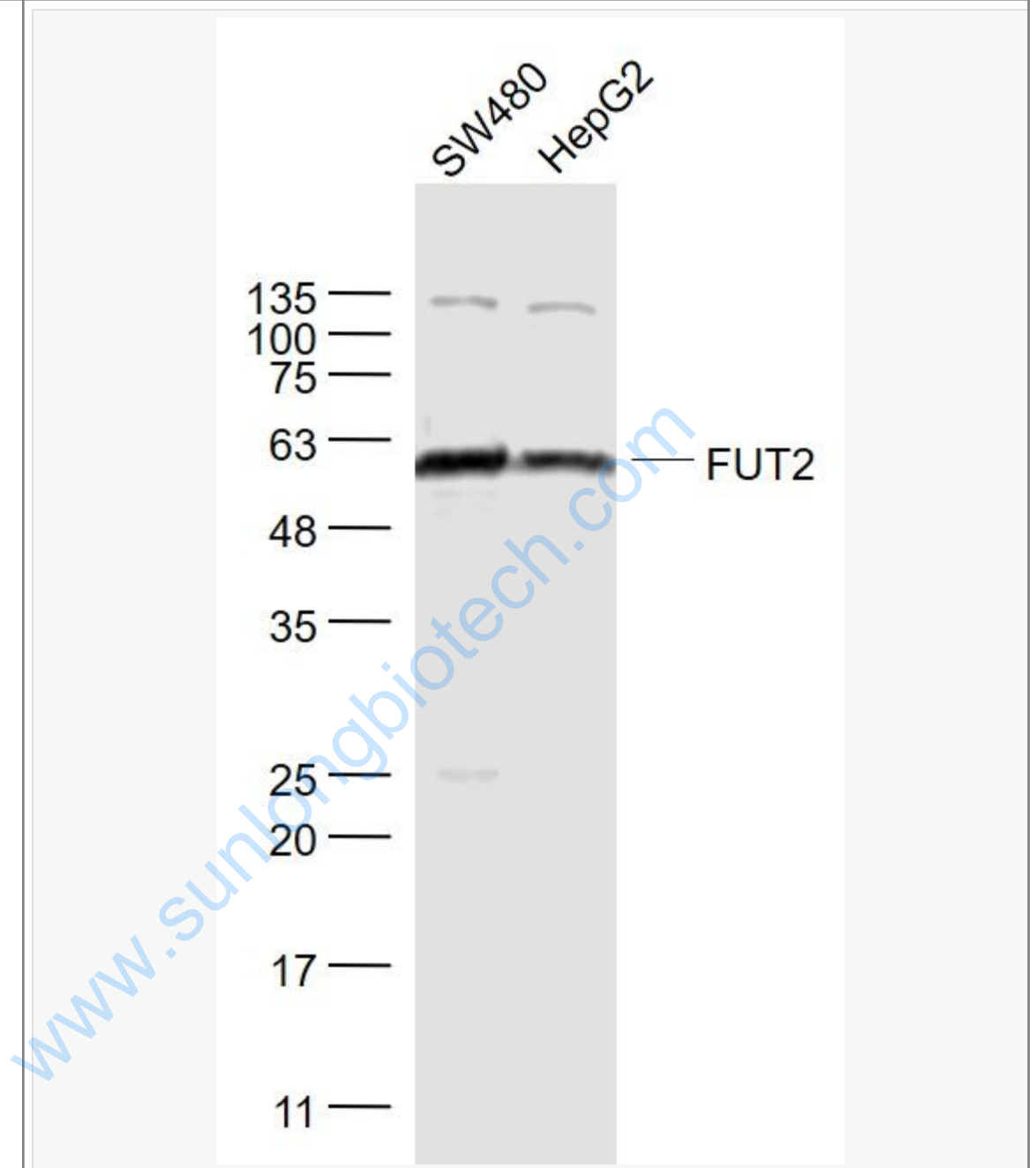
[Unigene: 579928](#)Human

[Unigene: 290046](#)Mouse

Important Note:

This product as supplied is intended for research use only, not for use in human, therapeutic or diagnostic applications.

Picture:



Sample:

SW480(Human) Cell Lysate at 30 ug

HepG2(Human) Cell Lysate at 30 ug

Primary: Anti- FUT2 (SL12258R) at 1/1000 dilution

Secondary: IRDye800CW Goat Anti-Rabbit IgG at 1/20000 dilution

	<p>Predicted band size: 39 kD</p>
	<p>Observed band size: 54 kD</p>