



## Rabbit Anti-PSMA4 antibody

SL12260R

<b>Product Name:</b>	PSMA4
<b>Chinese Name:</b>	蛋白酶体PSM $\alpha$ 4/20S Proteasome $\alpha$ 4抗体
<b>Alias:</b>	HC9; HsT17706; Macropain subunit C9; MGC111191; MGC12467; MGC24813; Multicatalytic endopeptidase complex subunit C9; Proteasome (prosome macropain) subunit alpha type 4; Proteasome alpha 4 subunit; Proteasome component C9; Proteasome subunit alpha type 4; Proteasome subunit alpha type-4; Proteasome subunit HC9; Proteasome subunit L; PSA4 HUMAN; PSC9; PSMA 4; psmA4.
<b>Organism Species:</b>	Rabbit
<b>Clonality:</b>	Polyclonal
<b>React Species:</b>	Human,Mouse,Rat,Pig,Horse,Monkey,
<b>Applications:</b>	WB=1:500-2000ELISA=1:500-1000IHC-P=1:400-800IHC-F=1:400-800ICC=1:100-500IF=1:100-500 (Paraffin sections need antigen repair) not yet tested in other applications. optimal dilutions/concentrations should be determined by the end user.
<b>Molecular weight:</b>	29kDa
<b>Cellular localization:</b>	The nucleuscytoplasmic
<b>Form:</b>	Lyophilized or Liquid
<b>Concentration:</b>	1mg/ml
<b>immunogen:</b>	KLH conjugated synthetic peptide derived from Human PSMA4:161-261/261
<b>Lsotype:</b>	IgG
<b>Purification:</b>	affinity purified by Protein A
<b>Storage Buffer:</b>	0.01M TBS(pH7.4) with 1% BSA, 0.03% Proclin300 and 50% Glycerol.
<b>Storage:</b>	Store at -20 癢 for one year. Avoid repeated freeze/thaw cycles. The lyophilized antibody is stable at room temperature for at least one month and for greater than a year when kept at -20癢. When reconstituted in sterile pH 7.4 0.01M PBS or diluent of antibody the antibody is stable for at least two weeks at 2-4 癢.
<b>PubMed:</b>	<a href="#">PubMed</a>
<b>Product Detail:</b>	The proteasome represents a large protein complex that exists inside all eukaryotes and archaea, and in some bacteria. The main function of proteasomes is to degrade

unnecessary or damaged proteins by proteolysis. The most common form of the proteasome, known as the 26S Proteasome, contains one 20S Proteasome core particle structure and two 19S regulatory caps. The 20S Proteasome core is hollow and forms an enclosed cavity, where proteins are degraded, as well as openings at the two ends to allow the target protein to enter. The 20S Proteasome core particle contains many subunits, depending on the organism. All of the subunits fall into one of two types: alpha subunits, which are structural, serve as docking domains for the regulatory particles and exterior gates blocking unregulated access to the interior cavity; or beta subunits, which are predominantly catalytic. The outer two rings in the proteasome consist of seven alpha subunits each, and the inner two rings each consist of seven beta subunits.

**Function:**

The proteasome is a multicatalytic proteinase complex which is characterized by its ability to cleave peptides with Arg, Phe, Tyr, Leu, and Glu adjacent to the leaving group at neutral or slightly basic pH. The proteasome has an ATP-dependent proteolytic activity.

**Subcellular Location:**

Cytoplasm. Nucleus.

**Similarity:**

Belongs to the peptidase T1A family.

**SWISS:**

P25789

**Gene ID:**

5685

**Database links:**

[Entrez Gene: 5685](#)Human

[Entrez Gene: 26441](#)Mouse

[Entrez Gene: 29671](#)Rat

[Omim: 176846](#)Human

[SwissProt: P25789](#)Human

[SwissProt: Q9R1P0](#)Mouse

[SwissProt: P21670](#)Rat

[Unigene: 251531](#)Human

[Unigene: 30270](#)Mouse

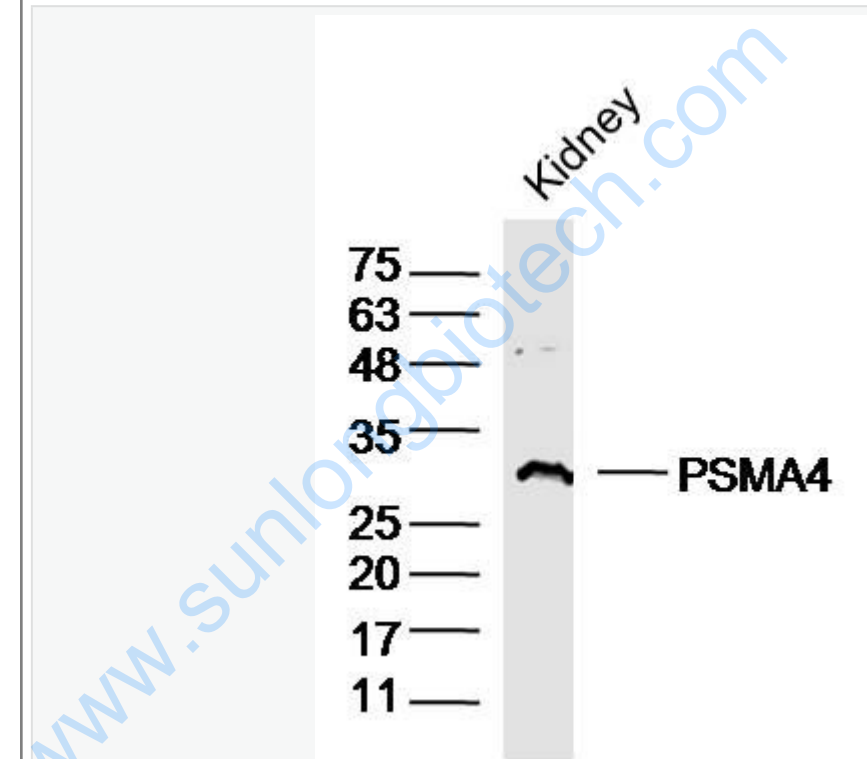
[Unigene: 440582](#)Mouse

[Unigene: 11076](#)Rat

**Important Note:**

This product as supplied is intended for research use only, not for use in human, therapeutic or diagnostic applications.

Picture:



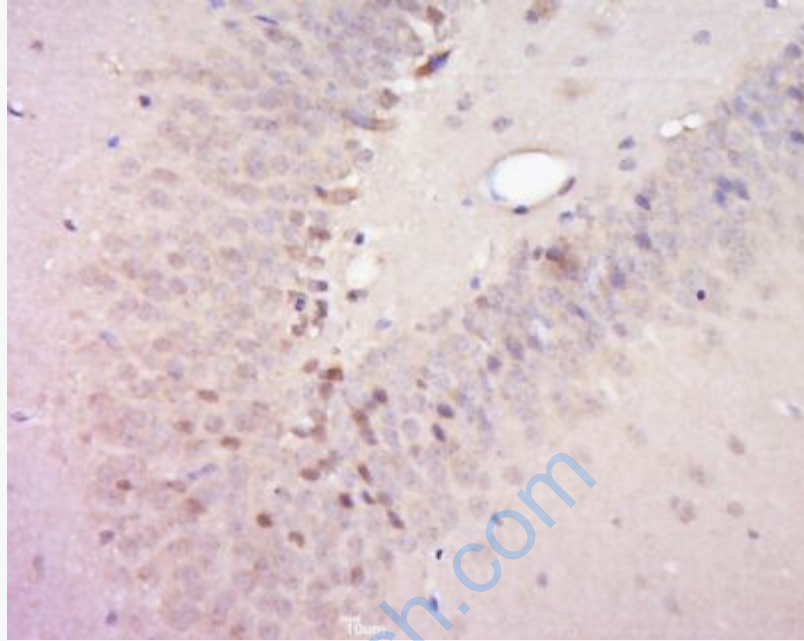
Sample: kidney (mouse) Lysate at 40 ug

Primary: Anti- PSMA4(SL12260R) at 1/300 dilution

Secondary: IRDye800CW Goat Anti-Rabbit IgG at 1/20000 dilution

Predicted band size: 29 kD

Observed band size: 29 kD



Tissue/cell: Rat brain tissue; 4% Paraformaldehyde-fixed and paraffin-embedded;  
Antigen retrieval: citrate buffer ( 0.01M, pH 6.0 ), Boiling bathing for 15min; Block endogenous peroxidase by 3% Hydrogen peroxide for 30min; Blocking buffer (normal goat serum,C-0005) at 37°C for 20 min;  
Incubation: Anti-PSMA4 Polyclonal Antibody, Unconjugated(SL12260R) 1:500, overnight at 4°C, followed by conjugation to the secondary antibody(SP-0023) and DAB(C-0010) staining