



## Rabbit Anti-NANOS1 antibody

SL12272R

<b>Product Name:</b>	NANOS1
<b>Chinese Name:</b>	生殖细胞增殖相关蛋白NANOS1抗体
<b>Alias:</b>	EC Rep1a; EC_Rep1a; NANO1_HUMAN; NANOS 1; Nanos homolog 1 (Drosophila); Nanos homolog 1; NANOS1; Nos 1; NOS-1; Nos1; OTTHUMP00000046853; Rep 1a; Rep1a; Nanos Homologue 1.
<b>Organism Species:</b>	Rabbit
<b>Clonality:</b>	Polyclonal
<b>React Species:</b>	Human,Mouse,Rat,Chicken,Dog,Pig,Cow,Sheep,
<b>Applications:</b>	WB=1:500-2000ELISA=1:500-1000IHC-P=1:400-800IHC-F=1:400-800ICC=1:100-500IF=1:100-500 (Paraffin sections need antigen repair) not yet tested in other applications. optimal dilutions/concentrations should be determined by the end user.
<b>Molecular weight:</b>	30kDa
<b>Cellular localization:</b>	cytoplasmic
<b>Form:</b>	Lyophilized or Liquid
<b>Concentration:</b>	1mg/ml
<b>immunogen:</b>	KLH conjugated synthetic peptide derived from Human NANOS1:221-330/292
<b>Lsotype:</b>	IgG
<b>Purification:</b>	affinity purified by Protein A
<b>Storage Buffer:</b>	0.01M TBS(pH7.4) with 1% BSA, 0.03% Proclin300 and 50% Glycerol.
<b>Storage:</b>	Store at -20 °C for one year. Avoid repeated freeze/thaw cycles. The lyophilized antibody is stable at room temperature for at least one month and for greater than a year when kept at -20°C. When reconstituted in sterile pH 7.4 0.01M PBS or diluent of antibody the antibody is stable for at least two weeks at 2-4 °C.
<b>PubMed:</b>	<a href="#">PubMed</a>
<b>Product Detail:</b>	Nanos1 is a 292 amino acid protein that localizes to the perinuclear region of the cytoplasm and contains one nanos-type zinc finger. Expressed at high levels in spermatogonia and present at lower levels in fetal ovaries, Nanos1 forms a complex with Pumilio 2 and functions to regulate the translation of select mRNAs, specifically via association with the 3'-UTR of its mRNA targets. Additionally, Nanos1 is required

for the establishment and maintenance of germline stem cells, as it prevents their premature entry into oogenesis. The gene encoding Nanos1 maps to human chromosome 10, which houses over 1,200 genes and comprises nearly 4.5% of the human genome. Defects in some of the genes that map to chromosome 10 are associated with Charcot-Marie Tooth disease, Jackson-Weiss syndrome, Usher syndrome, nonsyndromic deafness, Wolman's syndrome, Cowden syndrome, multiple endocrine neoplasia type 2 and porphyria.

**Function:**

May act as a translational repressor which regulates translation of specific mRNAs by forming a complex with PUM2 that associates with the 3'-UTR of mRNA targets. Capable of interfering with the proadhesive and anti-invasive functions of E-cadherin. Up-regulates the production of MMP14 to promote tumor cell invasion.

**Subunit:**

Interacts with PUM2, SNAPIN and CTNNB1. Interacts (via N-terminal region) with CTNND1.

**Subcellular Location:**

Cytoplasm.

**Tissue Specificity:**

Testis and ovary (at protein level). Predominantly expressed in testis. Specifically expressed during germline development. In adult tissues, it is mainly expressed in spermatogonia, the stem cells of the germline. Also expressed during meiosis in spermatocytes. Not present in late, post-meiotic stage germ cells. Expressed in fetal ovaries, while it is weakly or not expressed in mature postmeiotic oocytes, suggesting that it may be expressed in premeiotic female germ cells. Expressed at high levels only in the E-cadherin deficient cell lines. Highly expressed in lung carcinomas and mostly detected in invasive tumor cells and its expression correlates with tumor aggressiveness.

**DISEASE:**

Fetal ovary and fetal testis (at protein level).

**Similarity:**

Belongs to the nanos family.  
Contains 1 nanos-type zinc finger.

**SWISS:**

Q8WY41

**Gene ID:**

340719

**Database links:**

[Entrez Gene: 340719](#) Human

[Olim: 608226](#) Human

[SwissProt: Q8WY41](#) Human

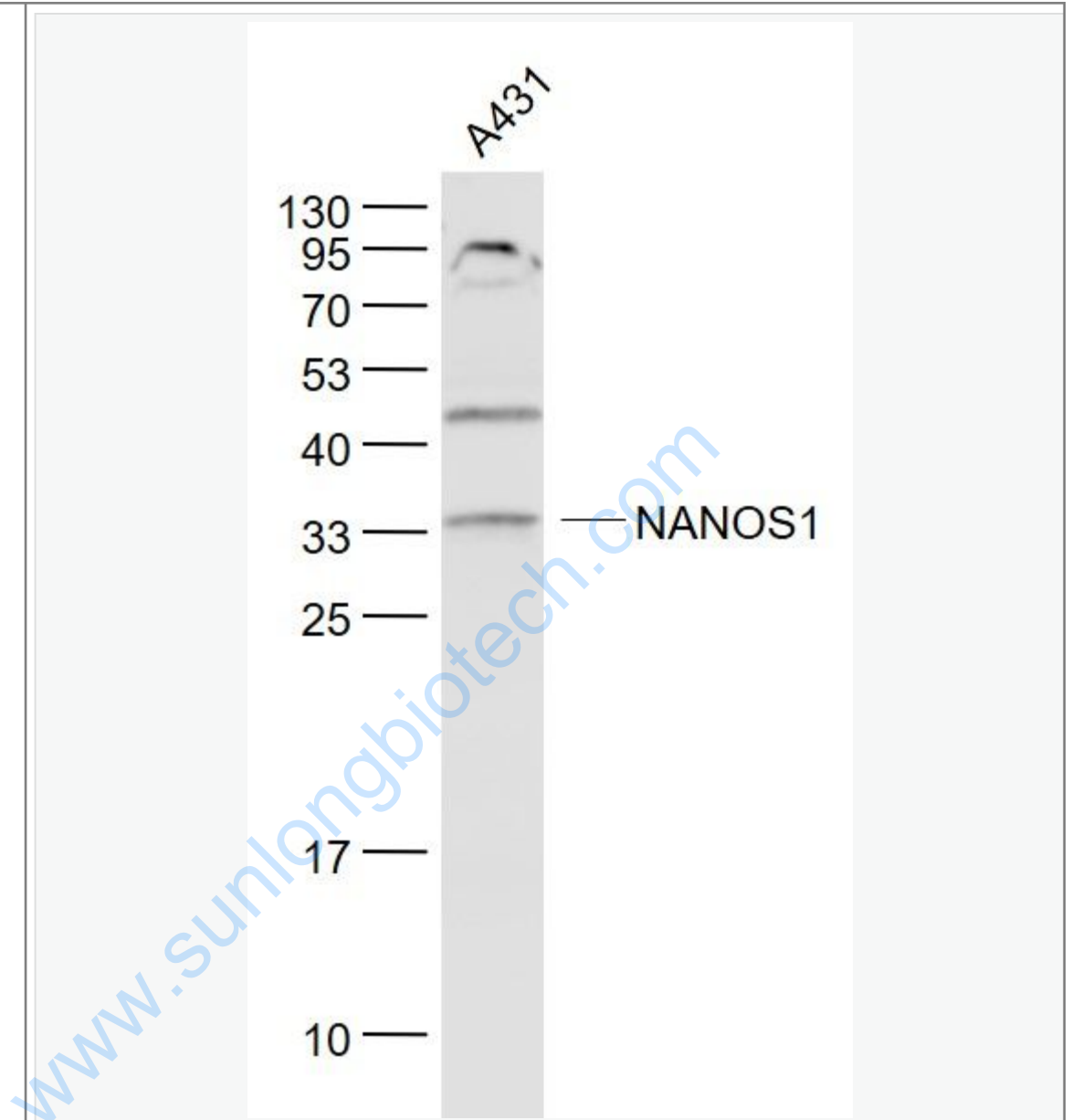
[Unigene: 591918](#) Human

**Important Note:**

This product as supplied is intended for research use only, not for use in human, therapeutic or diagnostic applications.

[www.sunlongbiotech.com](http://www.sunlongbiotech.com)

Picture:



Sample:

A431(Human) Cell Lysate at 30 ug

Primary: Anti- NANOS1 (SL12272R) at 1/1000 dilution

Secondary: IRDye800CW Goat Anti-Rabbit IgG at 1/20000 dilution

Predicted band size: 30 kD

	Observed band size: 33 kD
--	---------------------------

[www.sunlongbiotech.com](http://www.sunlongbiotech.com)