




Rabbit Anti-SOX1 antibody

SL12276R

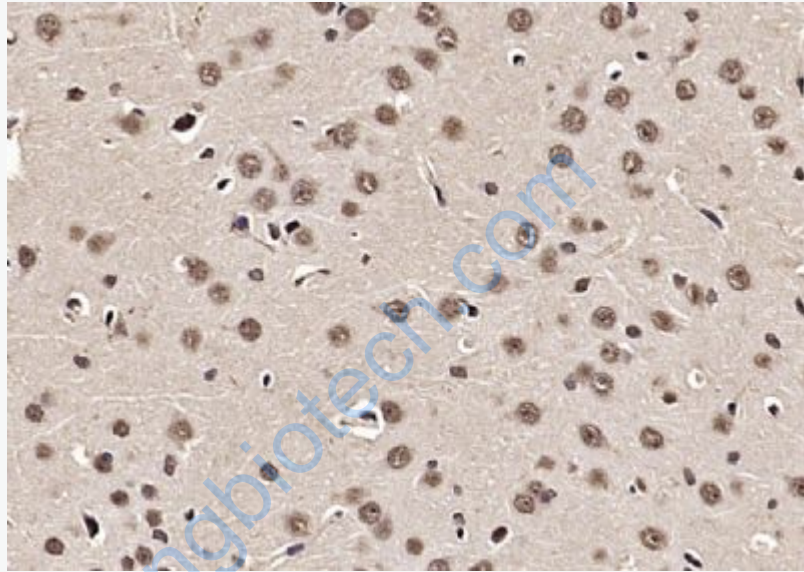
Product Name:	SOX1
Chinese Name:	核转录因子抗体
Alias:	sex determining region Y box 1; sox1; SOX1_HUMAN; SRY; SOX-1; SRY box containing gene 1; SRY related HMG box gene 1; Transcription factor Sox-1.
文献引用  :	Specific References(1) SL12276R has been referenced in 1 publications. [IF=2.84]Yang, Ning, et al. "SOX 1, contrary to SOX 2, suppresses proliferation, migration, and invasion in human laryngeal squamous cell carcinoma by inhibiting the Wnt/ β -catenin pathway." Tumor Biology (2015): 1-11. WB;Human. PubMed:26040764
Organism Species:	Rabbit
Clonality:	Polyclonal
React Species:	Human,Mouse,Rat,Pig,
Applications:	ELISA=1:500-1000IHC-P=1:400-800IHC-F=1:400-800ICC=1:100-500IF=1:100-500 (Paraffin sections need antigen repair) not yet tested in other applications. optimal dilutions/concentrations should be determined by the end user.
Molecular weight:	39kDa
Cellular localization:	The nucleus
Form:	Lyophilized or Liquid
Concentration:	1mg/ml
immunogen:	KLH conjugated synthetic peptide derived from Human SOX6:61-170/391
Lsotype:	IgG
Purification:	affinity purified by Protein A
Storage Buffer:	0.01M TBS(pH7.4) with 1% BSA, 0.03% Proclin300 and 50% Glycerol.
Storage:	Store at -20 °C for one year. Avoid repeated freeze/thaw cycles. The lyophilized antibody is stable at room temperature for at least one month and for greater than a year when kept at -20°C. When reconstituted in sterile pH 7.4 0.01M PBS or diluent of

	antibody the antibody is stable for at least two weeks at 2-4 °C.
PubMed:	PubMed
Product Detail:	<p>Sox genes comprise a family of genes that are related to the mammalian sex determining gene SRY. These genes similarly contain sequences that encode for the HMG-box domain, which is responsible for the sequence-specific DNA-binding activity. Sox genes encode putative transcriptional regulators implicated in the decision of cell fates during development and the control of diverse developmental processes. The highly complex group of Sox genes cluster at least 40 different loci that rapidly diverged in various animal lineages. At present, 30 Sox genes have been identified. Members of this family have been shown to be conserved during evolution and to play key roles during animal development. Some are involved in human diseases, including sex reversal.</p> <p>Function: Transcriptional activator.</p> <p>Subcellular Location: Nucleus.</p> <p>Tissue Specificity: Mainly expressed in the developing central nervous system.</p> <p>Post-translational modifications: Sumoylation inhibits the transcriptional activity.</p> <p>Similarity: Contains 1 HMG box DNA-binding domain.</p> <p>SWISS: O00570</p> <p>Gene ID: 6656</p> <p>Database links:</p> <p>Entrez Gene: 6656 Human</p> <p>Entrez Gene: 20664 Mouse</p> <p>Omim: 602148 Human</p> <p>SwissProt: O00570 Human</p> <p>SwissProt: P53783 Mouse</p> <p>Unigene: 202526 Human</p>

[Unigene: 39088](#) Mouse

Important Note:

This product as supplied is intended for research use only, not for use in human, therapeutic or diagnostic applications.



Picture:

Paraformaldehyde-fixed, paraffin embedded (rat brain); Antigen retrieval by microwave in sodium citrate buffer (pH6.0) ; Block endogenous peroxidase by 3% hydrogen peroxide for 30 minutes; Blocking buffer (3% BSA) at RT for 30min; Antibody incubation with (SOX1) Polyclonal Antibody, Unconjugated (SL12276R) at 1:400 overnight at 4°C, followed by conjugation to the secondary antibody (labeled with HRP) and DAB staining.