



Rabbit Anti-Stella antibody

SL12280R

Product Name:	Stella
Chinese Name:	发育多能性相关蛋白3抗体
Alias:	DPPA3; Compaction associated protein 1; Developmental pluripotency associated 3; Developmental pluripotency associated protein 3; Developmental pluripotency-associated protein 3; Dppa 3; Dppa3; DPPA3_HUMAN; PGC7; Stella related protein; Stella-related protein; Stellar.
Organism Species:	Rabbit
Clonality:	Polyclonal
React Species:	Human,Mouse,
Applications:	WB=1:500-2000ELISA=1:500-1000IHC-P=1:400-800IHC-F=1:400-800ICC=1:100-500IF=1:100-500 (Paraffin sections need antigen repair) not yet tested in other applications. optimal dilutions/concentrations should be determined by the end user.
Molecular weight:	18kDa
Cellular localization:	The nucleuscytoplasmic
Form:	Lyophilized or Liquid
Concentration:	1mg/ml
immunogen:	KLH conjugated synthetic peptide derived from human Stella/DPPA3:101-159/159
Lsotype:	IgG
Purification:	affinity purified by Protein A
Storage Buffer:	0.01M TBS(pH7.4) with 1% BSA, 0.03% Proclin300 and 50% Glycerol.
Storage:	Store at -20 °C for one year. Avoid repeated freeze/thaw cycles. The lyophilized antibody is stable at room temperature for at least one month and for greater than a year when kept at -20°C. When reconstituted in sterile pH 7.4 0.01M PBS or diluent of antibody the antibody is stable for at least two weeks at 2-4 °C.
PubMed:	PubMed
Product Detail:	This gene encodes a protein that in mice may function as a maternal factor during the preimplantation stage of development. In mice, this gene may play a role in transcriptional repression, cell division, and maintenance of cell pluripotentiality. In humans, related intronless loci are located on chromosomes 14 and X. [provided by

RefSeq, Jul 2008]

Function:

May play a role in maintaining cell pluripotentiality.

Subcellular Location:

Nucleus. Cytoplasm.

Tissue Specificity:

Low expression in testis, ovary and thymus. Expressed in embryonic stem and carcinoma cells. Highly expressed in testicular germ cell tumors.

DISEASE:

Expressed in fetal ovary.

SWISS:

Q6W0C5

Gene ID:

359787

Database links:

[Entrez Gene: 359787](#) Human

[Entrez Gene: 73708](#) Mouse

[Entrez Gene: 297576](#) Rat

[Omim: 608408](#) Human

[SwissProt: Q6W0C5](#) Human

[SwissProt: Q8QZY3](#) Mouse

[SwissProt: Q6IMK0](#) Rat

[Unigene: 131358](#) Human

[Unigene: 528118](#) Human

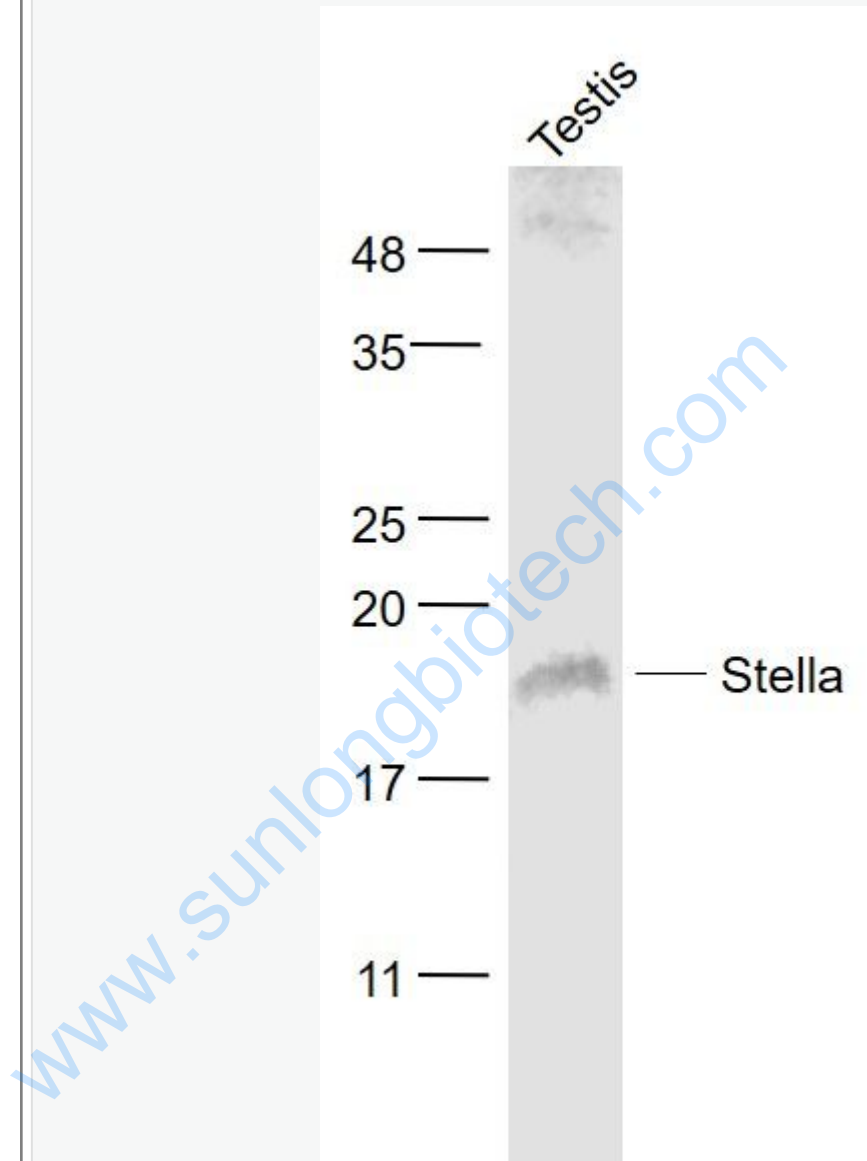
[Unigene: 27982](#) Mouse

[Unigene: 79056](#) Rat

Important Note:

This product as supplied is intended for research use only, not for use in human, therapeutic or diagnostic applications.

Picture:



Sample:

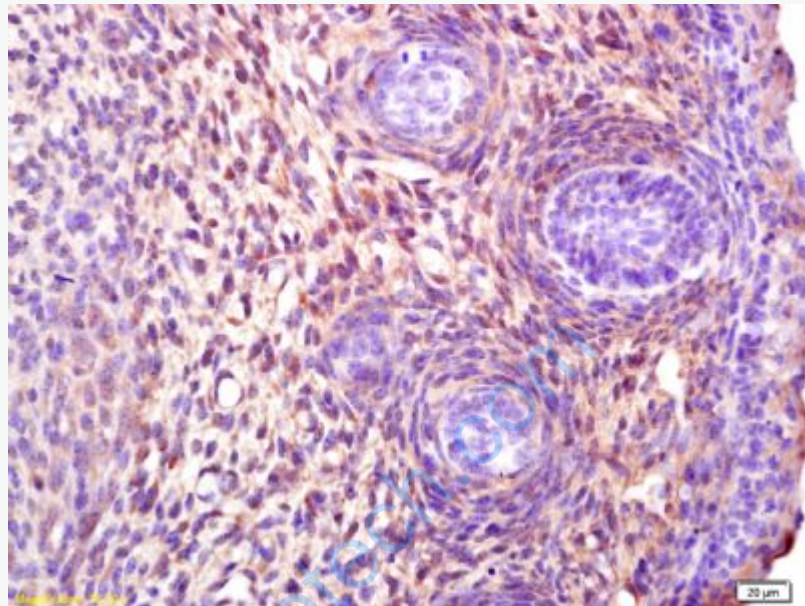
Testis (Mouse) Lysate at 40 ug

Primary: Anti- Stella (SL12280R) at 1/1000 dilution

Secondary: IRDye800CW Goat Anti-Rabbit IgG at 1/20000 dilution

Predicted band size: 18 kD

Observed band size: 18 kD



Tissue/cell: mouse embryo tissue; 4% Paraformaldehyde-fixed and paraffin-embedded;

Antigen retrieval: citrate buffer (0.01M, pH 6.0), Boiling bathing for 15min; Block endogenous peroxidase by 3% Hydrogen peroxide for 30min; Blocking buffer (normal goat serum,C-0005) at 37°C for 20 min;

Incubation: Anti-Stella/DPPA3 Polyclonal Antibody, Unconjugated(SL12280R) 1:200, overnight at 4°C, followed by conjugation to the secondary antibody(SP-0023) and DAB(C-0010) staining