



Rabbit Anti-GIPC1 antibody

SL12304R

Product Name:	GIPC1
Chinese Name:	胰岛素样生长因子1受体相互作用蛋白1抗体
Alias:	C19ORF3; Chromosome 19 open reading frame 3; GIPC; GLUT1 C terminal binding protein; GLUT1CBP; IGF 1 receptor interacting protein 1; IIP 1; IIP1; NIP; PDZ domain-containing protein GIPC1; Regulator of G protein signalling 19 interacting protein 1; RGS19 interacting protein 1; RGS19IP1; SEMCAP; SYNECTIN; Tax interaction protein 2; TIP 2; GIPC1_HUMAN.
Organism Species:	Rabbit
Clonality:	Polyclonal
React Species:	Human,Mouse,Rat,Dog,Cow,Sheep,
Applications:	ELISA=1:500-1000IHC-P=1:400-800IHC-F=1:400-800ICC=1:100-500IF=1:100-500 (Paraffin sections need antigen repair) not yet tested in other applications. optimal dilutions/concentrations should be determined by the end user.
Molecular weight:	36kDa
Cellular localization:	cytoplasmicThe cell membrane
Form:	Lyophilized or Liquid
Concentration:	1mg/ml
immunogen:	KLH conjugated synthetic peptide derived from human GIPC1:101-160/333
Lsotype:	IgG
Purification:	affinity purified by Protein A
Storage Buffer:	0.01M TBS(pH7.4) with 1% BSA, 0.03% Proclin300 and 50% Glycerol.
Storage:	Store at -20 °C for one year. Avoid repeated freeze/thaw cycles. The lyophilized antibody is stable at room temperature for at least one month and for greater than a year when kept at -20°C. When reconstituted in sterile pH 7.4 0.01M PBS or diluent of antibody the antibody is stable for at least two weeks at 2-4 °C.
PubMed:	PubMed
Product Detail:	GIPC, for GAIP interacting protein at the C terminus (also designated SEMCAP-1 or synectin), is a PDZ domain containing protein that interacts with RGS-GAIP, a GTPase-activating protein (GAP) for G(a i) subunits. GIPC was also identified as TIP-2, a

protein that interacts with the viral oncoprotein TAX, which transactivates viral and cellular promoters through interactions with various transcription factors. PDZ domain-containing proteins are primarily localized to cell-cell junctions in epithelial cells and neurons where they coordinate the assembly of multiprotein complexes. GIPC specifically localizes to clusters of vesicles near the plasma membrane and participates in G protein-coupled signaling pathway involved in regulating clathrin-coated vesicular trafficking. GIPC also associates with membrane bound semaphorin F (M-SemF), which is involved in neuronal axon growth, and it appears to regulate the subcellular distribution of M-SemF in the brain.

Function:

GIPC1 is a hydrophilic protein that contains 333 amino acids, including multiple phosphorylation sites and an 80 to 100 amino acid PDZ domain. PDZ domain-containing proteins typically recognize C terminal amino acids and are involved in protein network signaling. GIPC1 may be involved in G protein-linked signaling.

Subunit:

Interacts with GLUT1 (C-terminus), ACTN1, KIF1B, MYO6, PLEKHG5, SDC4/syndecan-4 and SEMA4C/semaphorin-4C (By similarity). Interacts with RGS19 C-terminus. Interacts with HTLV-I Tax through the PDZ domain.

Subcellular Location:

Cell Membrane, peripheral membrane protein and Cytoplasmic.

Tissue Specificity:

Widely expressed.

Similarity:

Belongs to the GIPC family.
Contains 1 PDZ (DHR) domain.

SWISS:

O14908

Gene ID:

10755

Database links:

[Entrez Gene: 10755](#)Human

[Entrez Gene: 67903](#)Mouse

[Entrez Gene: 83823](#)Rat

[Omim: 605072](#)Human

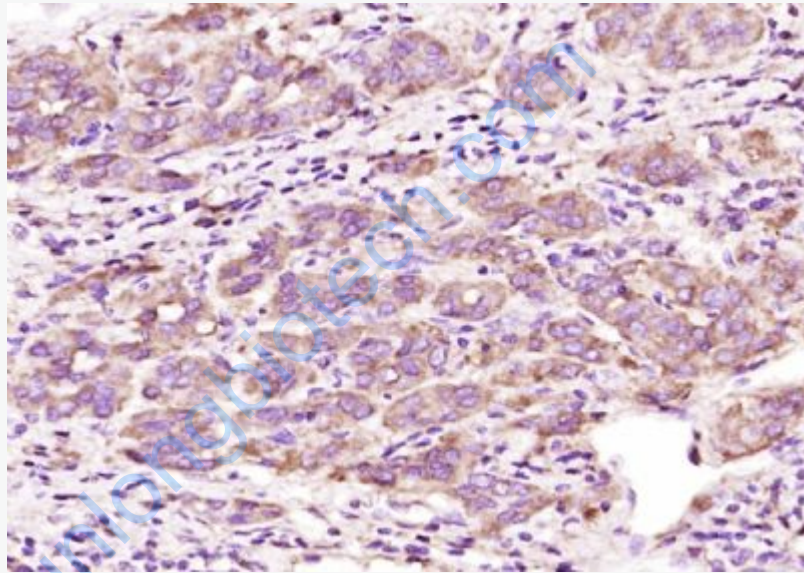
[SwissProt: O14908](#)Human

[SwissProt: Q9Z0G0](#)Mouse

[SwissProt: Q9Z254](#)Rat

Important Note:

This product as supplied is intended for research use only, not for use in human, therapeutic or diagnostic applications.



Picture:

Paraformaldehyde-fixed, paraffin embedded (human liver carcinoma); Antigen retrieval by boiling in sodium citrate buffer (pH6.0) for 15min; Block endogenous peroxidase by 3% hydrogen peroxide for 20 minutes; Blocking buffer (normal goat serum) at 37°C for 30min; Antibody incubation with (GIPC1) Polyclonal Antibody, Unconjugated (SL12304R) at 1:400 overnight at 4°C, followed by operating according to SP Kit(Rabbit) (sp-0023) instructions and DAB staining.